

CONSULTANT



PROJECT NO. A21-051

STAMPS

NO	DATE	ISSUE/REVISION	BY	APPROVED	CHECKED	SEAL
1	08/09/22	30% DESIGN REVIEW	DGN	TPB		
2	13/03/23	ISSUED FOR 30% DESIGN REVIEW	DGN	TPB		
3	03/05/23	ISSUED FOR OPEN HOUSE	DGN	TPB		

NO	DATE	ISSUE/REVISION	BY	APPROVED	CHECKED	SEAL

SURVEY

COFK

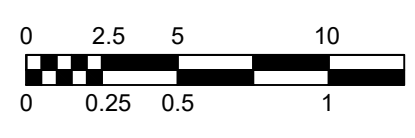
DESIGN

DGN

SCALE

H 1:250

V 1:25



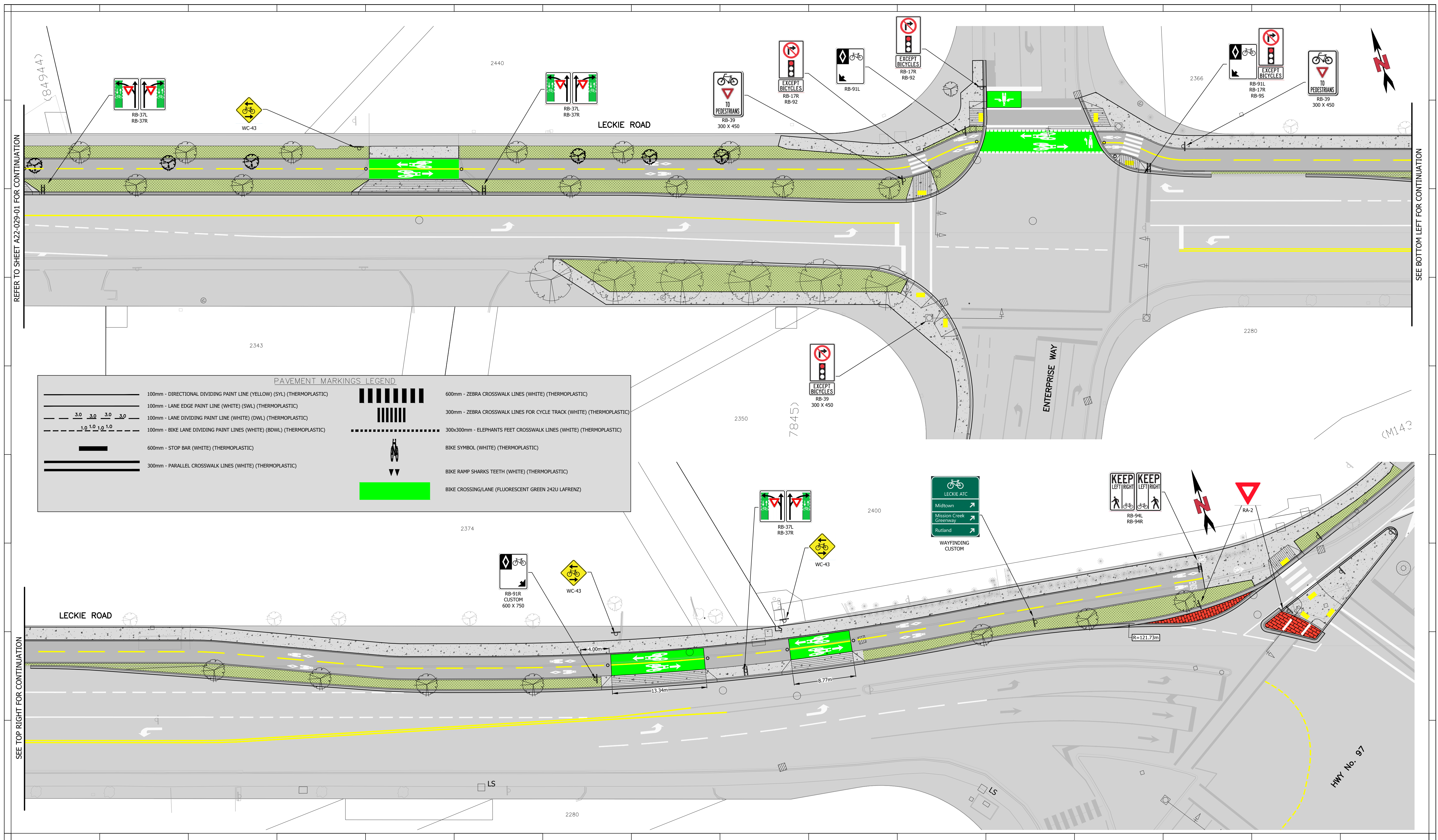
CITY OF KELOWNA

LECKIE ROAD ATC

TRAFFIC MARKINGS, SIGNAGE AND GEOMETRY

STA. 0+000 TO STA. 0+420

CITY DEPT. INFRASTRUCTURE	
CITY FILE NO. ----	
PROJECT DWG NO. A22-029-C01	REV NO. 2
CITY DWG NO.	SHEET NUMBER 1



PAVEMENT MARKINGS LEGEND

	100mm - DIRECTIONAL DIVIDING PAINT LINE (YELLOW) (SYL) (THERMOPLASTIC)		600mm - ZEBRA CROSSWALK LINES (WHITE) (THERMOPLASTIC)
	100mm - LANE EDGE PAINT LINE (WHITE) (SWL) (THERMOPLASTIC)		300mm - ZEBRA CROSSWALK LINES FOR CYCLE TRACK (WHITE) (THERMOPLASTIC)
	100mm - LANE DIVIDING PAINT LINE (WHITE) (DWL) (THERMOPLASTIC)		300x300mm - ELEPHANTS FEET CROSSWALK LINES (WHITE) (THERMOPLASTIC)
	100mm - BIKE LANE DIVIDING PAINT LINES (WHITE) (BDWL) (THERMOPLASTIC)		BIKE SYMBOL (WHITE) (THERMOPLASTIC)
	600mm - STOP BAR (WHITE) (THERMOPLASTIC)		BIKE RAMP SHARKS TEETH (WHITE) (THERMOPLASTIC)
	300mm - PARALLEL CROSSWALK LINES (WHITE) (THERMOPLASTIC)		BIKE CROSSING/LANE (FLUORESCENT GREEN 242U LAFRENZ)

CONSULTANT

PROJECT NO. A21-051

STAMPS

NO	DATE	ISSUE/REVISION	BY	APPROVED	CHECKED	SEAL
1	08/09/22	30% DESIGN REVIEW	DGN	TPB		
2	13/03/23	ISSUED FOR 30% DESIGN REVIEW	DGN	TPB		
3	03/05/23	ISSUED FOR OPEN HOUSE	DGN	TPB		

NO	DATE	ISSUE/REVISION	BY	APPROVED	CHECKED	SEAL
1	08/09/22	30% DESIGN REVIEW	DGN	TPB		
2	13/03/23	ISSUED FOR 30% DESIGN REVIEW	DGN	TPB		
3	03/05/23	ISSUED FOR OPEN HOUSE	DGN	TPB		

SURVEY

DESIGN

SCALE

H 1:250
V 1:25

CITY OF KELOWNA

LECKIE ROAD ATC
TRAFFIC MARKINGS, SIGNAGE AND GEOMETRY
STA. 0+420 TO STA. 0+760

CITY DEPT. INFRASTRUCTURE

CITY FILE NO. ----

PROJECT DWG NO. A22-029-C02

CITY DWG NO. ---

REV NO. 1

SHEET NUMBER 2