

# UPPER CANYON DRIVE TRAFFIC CALMING PLAN

## Information Session

North Glenmore Elementary (125 Snowsell St N)

Wednesday, April 25, 2018 4:00 - 6:00 PM





## Why are we here?

- Over **30 service requests** received by the City since 2010, primarily related to traffic speed on Upper Canyon Drive.

## What has been done to review and respond to the issues?

- Data collection and observations over the past 7 years:
  - Vehicle counts (average daily traffic 1,800 veh/day)
  - Speed data collection and analysis (speed of 62 km/h)

## What has been tried to slow down traffic?

- Installed Speed Display Signs on temporary basis (effective only for short periods of time).
- In 2016, installed temporary speed cushions at 2 locations (for roads with grades less than 8%).



Example of Temporary  
Speed Display Sign

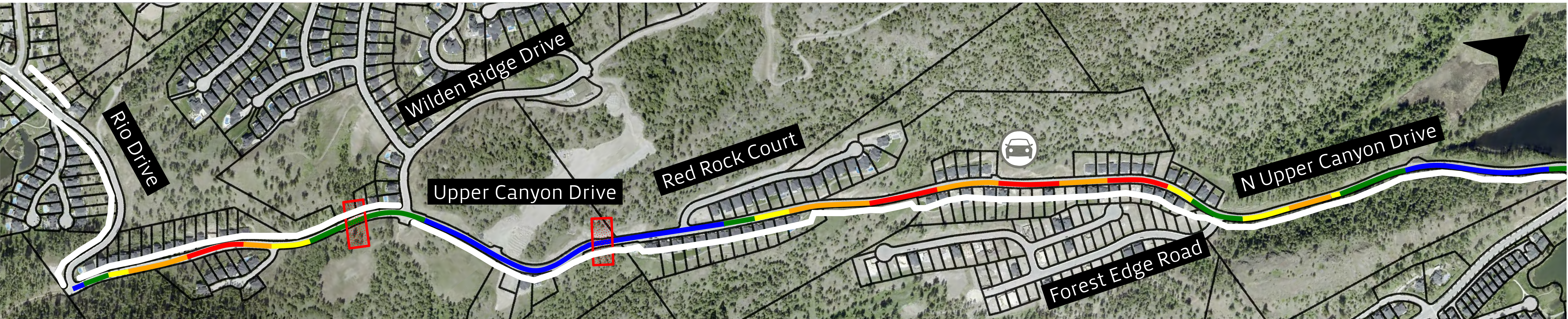
## What are the limitations for using conventional traffic calming devices such as “speed humps” or “speed cushions”?

- Installation of speed humps/cushions is not supported by national traffic calming guidelines on grades 8% or higher. In Kelowna, we do not install on grades steeper than 6%.
- Most sections of Upper Canyon Drive with residential houses have grades higher than 6%.
- Upper Canyon Drive is the only road into this area of Wilden for emergency services. For this reason, speed cushions are acceptable in road sections with grades less than 6%.
- For the above reasons, other traffic calming devices are suggested in the following panels.





This map shows grades, sidewalks, and traffic count/speed data collection location along Upper Canyon Drive. Also shown are locations where speed cushions were installed on a temporary basis in 2016.



**Legend**

Sidewalk

2016 Temporary Speed Cushions

Grades 0 - 3%

Grades 3 - 6%

Grades 6 - 8%

Grades 8 - 10%

Grades >10%

Traffic Count Location

2016 Average Daily Traffic - 1,800 veh/day

2016 85th Percentile Speeds - 62 km per hour



# TRAFFIC CALMING MEASURES

5

## Examples of Traffic Calming

### Road Narrowing with Delineator Posts



#### Advantages

- ▶ Reduces speed by narrowing the road
- ▶ Can be used on any grades

#### Disadvantages

- ▶ Regular maintenance & replacement may be required
- ▶ May restrict driveway access
- ▶ May require removal of parking
- ▶ Snow removal time is increased

### Dragon's Teeth



- ▶ Reduce speed by giving motorists the perception that they are speeding up

- ▶ Road markings may be covered by snow in the winter
- ▶ Require ongoing maintenance

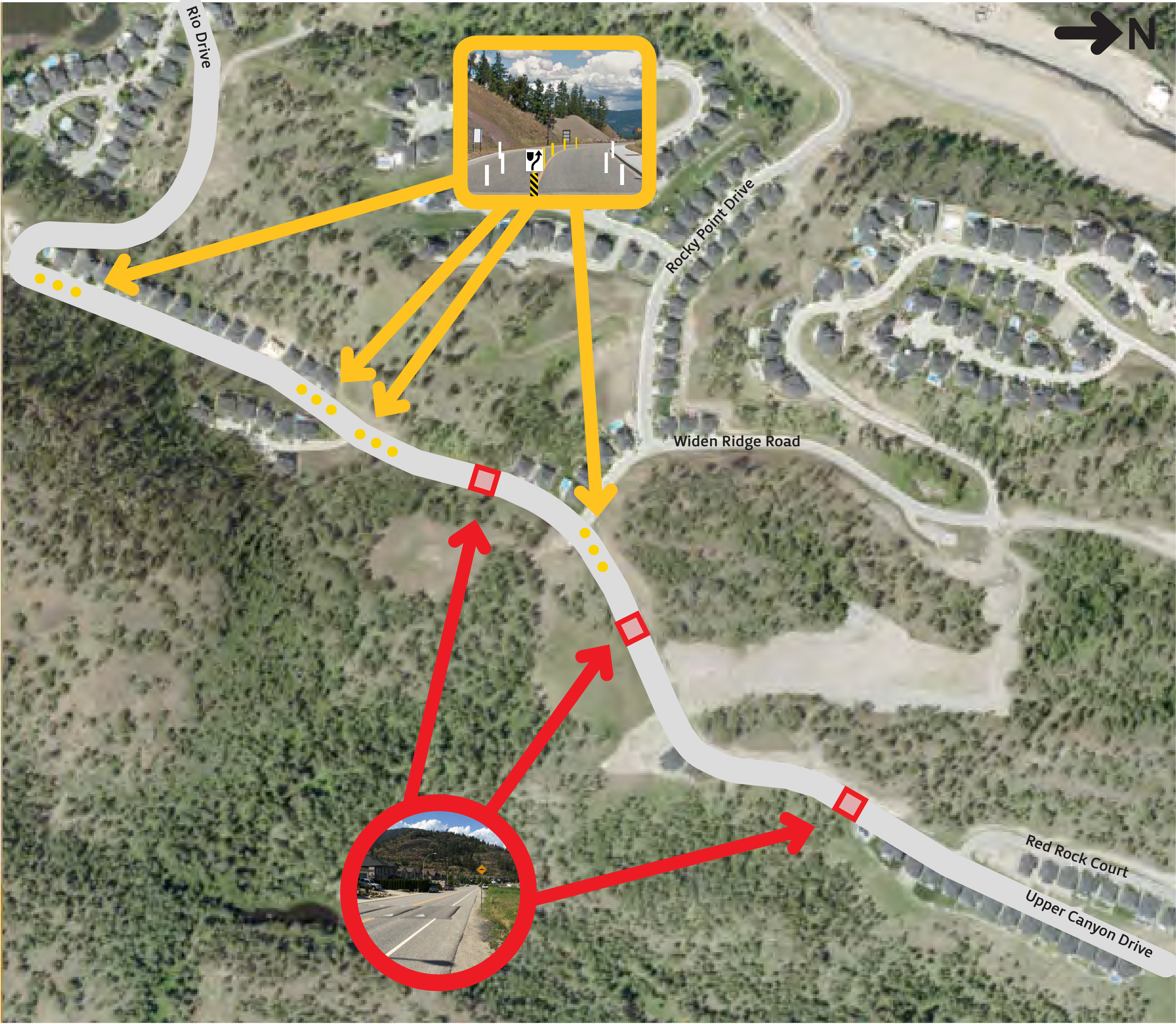
### Speed Cushions



- ▶ Similar to speed humps but allow emergency vehicles to pass over at speed
- ▶ Reduces speed and forces motorists to slow down

- ▶ Used on grades 6% and less, used with caution on grades 6% to 8%
- ▶ Not to be used on grades greater than 8%
- ▶ Snow removal time is increased





Road Narrowing Delineator Posts on Upper Canyon Drive north of Wilden Ridge Drive.



Road Narrowing Delineator Posts on Upper Canyon Drive at Tree Top Place.



Speed Cushions on Upper Canyon Drive



Dragon's Teeth



Speed Cushion



Centreline Treatment





Dragon's Teeth Road Markings  
on Upper Canyon Drive



Parking Closure at Upper  
Canyon Drive and  
Red Court Drive

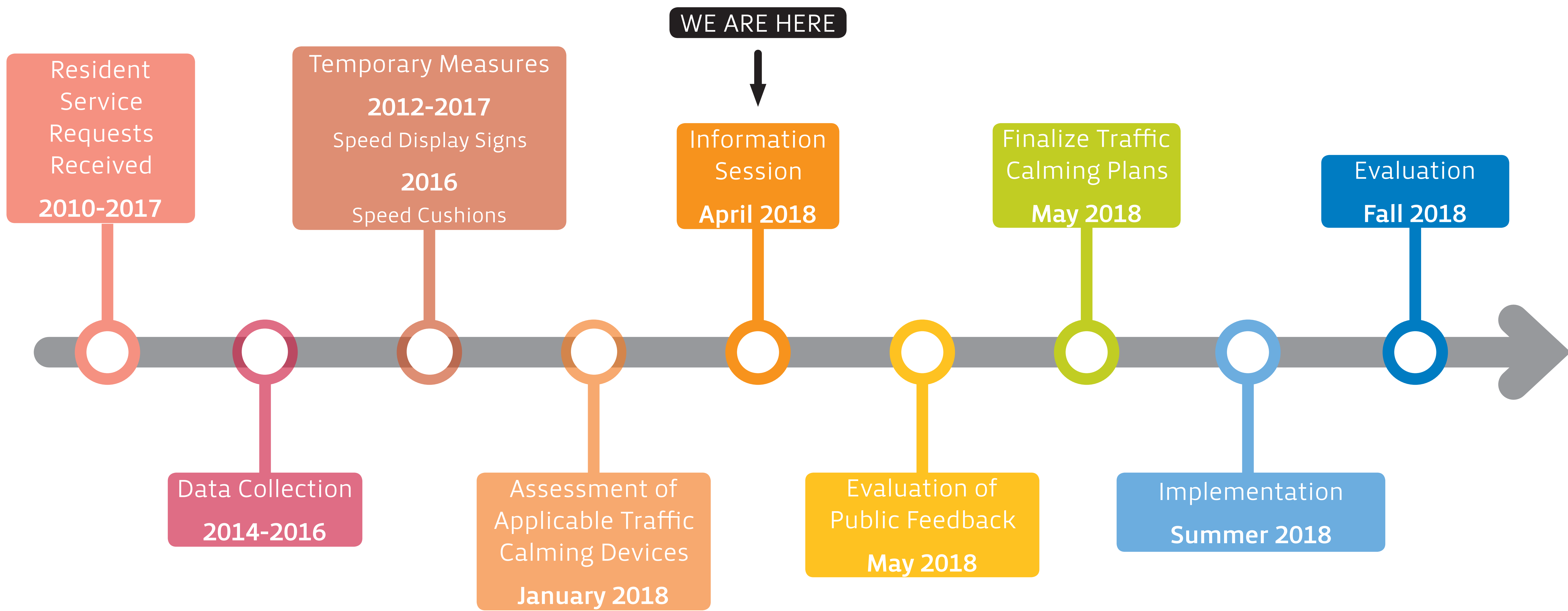


Dragon's Teeth



Centreline Treatment

# PROJECT TIMELINE & NEXT STEPS





## How can residents get involved?

1. Complete survey at the open house or online at:

**[www.surveymonkey.com/r/UpperCanyon](http://www.surveymonkey.com/r/UpperCanyon)**

2. Online survey open until:

**Friday, May 11, 2018**

3. Follow the progress of this project at:

**[kelowna.ca/cityprojects](http://kelowna.ca/cityprojects)>Upper Canyon Drive**

Poster boards and the survey from this open house will be available online

## Contacts

### City Contact:

Fred Wollin

Transportation Engineering Specialist

[fwollin@kelowna.ca](mailto:fwollin@kelowna.ca)

250-469-8702

### Consultant Contact:

Tom Baumgartner

Transportation Engineer

[TBaumgartner@wattconsultinggroup.com](mailto:TBaumgartner@wattconsultinggroup.com)

778-813-1014 ext. 431