

WELCOME TO THE SUTHERLAND AVENUE PROTECTED BIKE LANE OPEN HOUSE

The goal of this Open House is to provide:

- Results from the 2016 Open House;
- Background and status;
- Showcase the preliminary design, features and use of the facility; and
- Gather your feedback.

2016 CONSULTATION RESULTS

An Open House and survey were distributed in Spring, 2016.
Results of the 370 completed surveys indicated that:



83% are generally in favour of protected bike lanes



86% currently use cars along Sutherland Avenue



40% use Sutherland Avenue daily for their trips



69% liked the concept design



67% would be encouraged to walk and bicycle more on this corridor

Concerns highlighted by respondents included challenges at intersections, loss of parking and the bike lane design.

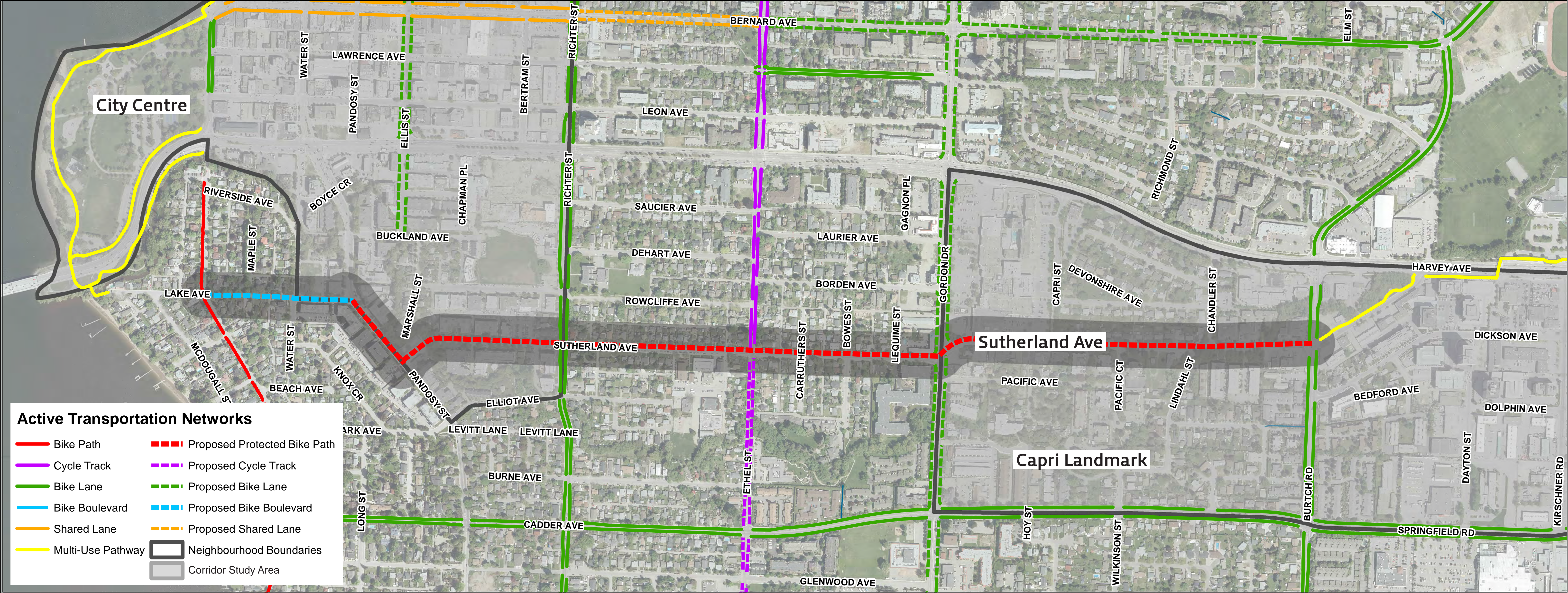


PROJECT TIMELINE



*Coordination of construction phasing to be determined during Detailed Design phase.

**Construction phasing pending budget approval.



The Protected Bike Lane Project will achieve the following benefits:

Promote Connectivity



- Provides a bicycling link in the core city area to the Ethel Street ATC, Abbott Street Recreation Corridor, City Centre and Capri Landmark.



- Provides an improved and protected facility for people walking and bicycling from other travel modes.



- Improves network connections for people walking and bicycling between major Urban Centres and Major Activity Centres.

Promote Livable Communities:



- Enhancing safety and comfort for people walking and bicycling.



- Improving health from increased physical activity.
- Health and environmental benefits from reduced air pollution.



- Boosting mobility and travel choices for residents.

Key Features of a Protected Bike Lane Include:

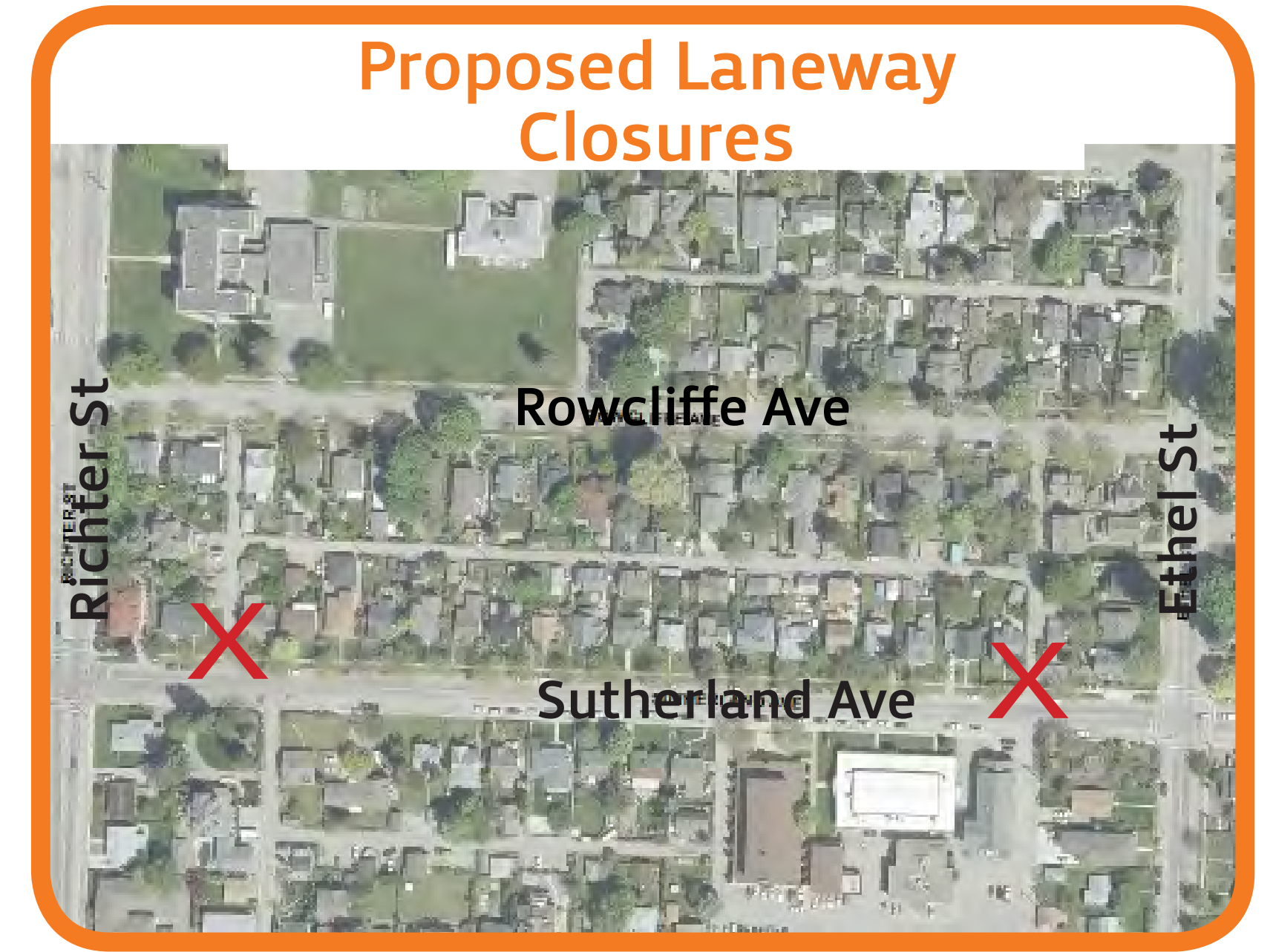
Bike + Pedestrian Signals

Provide safe and separated crossing for people on bikes and people walking. Vehicle traffic signals are red with no turns allowed during the BIKE and WALK signal display.



Access Control

Closure of some public lanes and removing / relocating some driveways will reduce the number of conflict points with vehicles crossing over the protected bike lanes and sidewalk.



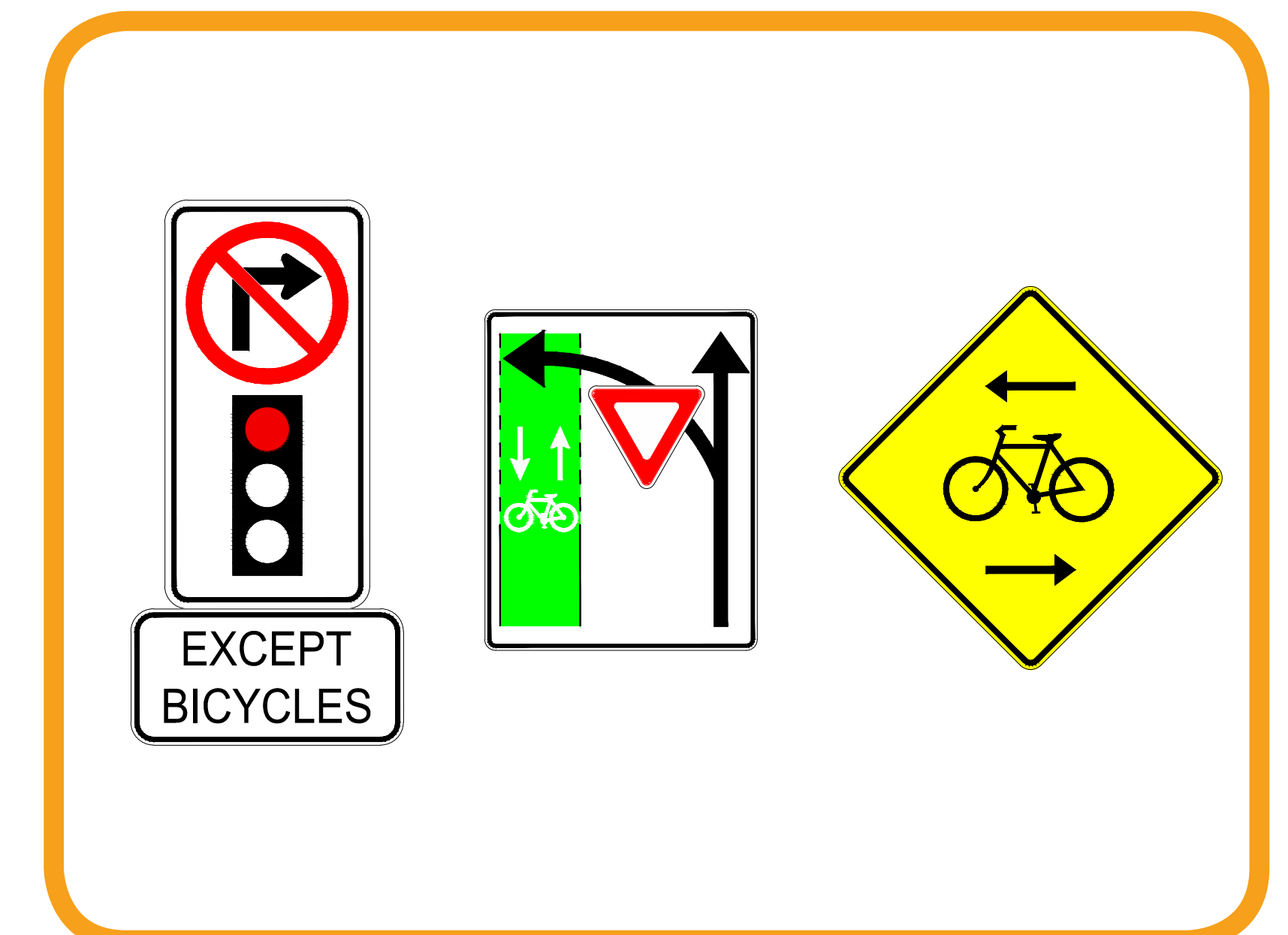
Separation

Raised barrier separation is used to delineate and protect people on bikes from adjacent vehicle traffic.



Signage

New signage along the corridor provides messages to all users.



FEATURES UNDER CONSIDERATION

7

Additional Features may include:

Raised Crossings

Stop controlled streets crossing the protected bike lanes are raised to promote safety and increase awareness of people and bikes to approaching vehicle traffic.



Green Pavement Markings + Bicycle Stencils

These road markings identify and increase the awareness of bicycling facility crossings. The bicycle stencils reinforce the bicycle exclusive facility and directions of travel.



Transit

The protected bike lane is raised at transit stops to provide accessibility and priority to people/transit users crossing to and from the bus stop. A raised island between the travel lane and protected bike lane provides transit users with a space to wait.

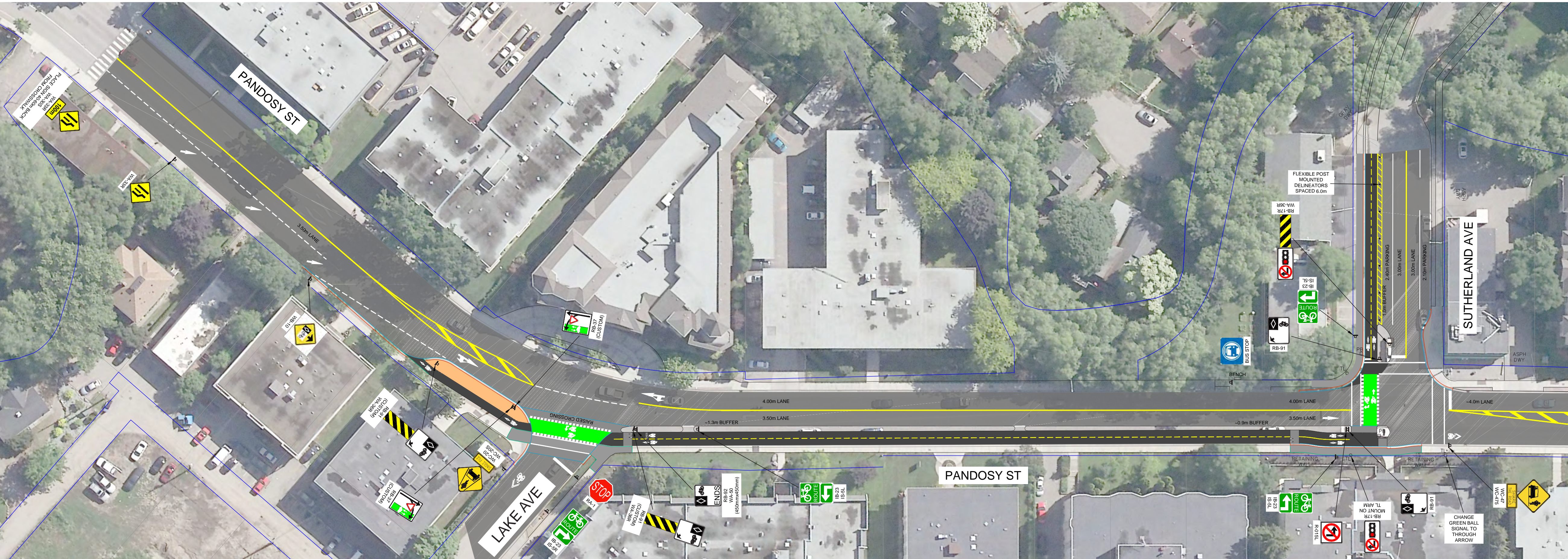


Additional Devices

Warning flashing systems to detect the presence of people walking and bicycling are being researched and may be included in the final design.



PANDOSY STREET
Lake Ave to Sutherland Ave



Removal of Pandosy Street Southbound Left-Turn Lane to Sutherland Avenue

Sutherland Avenue
Protected Bike Lane

ROAD SEGMENTS - SUTHERLAND AVENUE

Pandosy St to
Richter St
Options

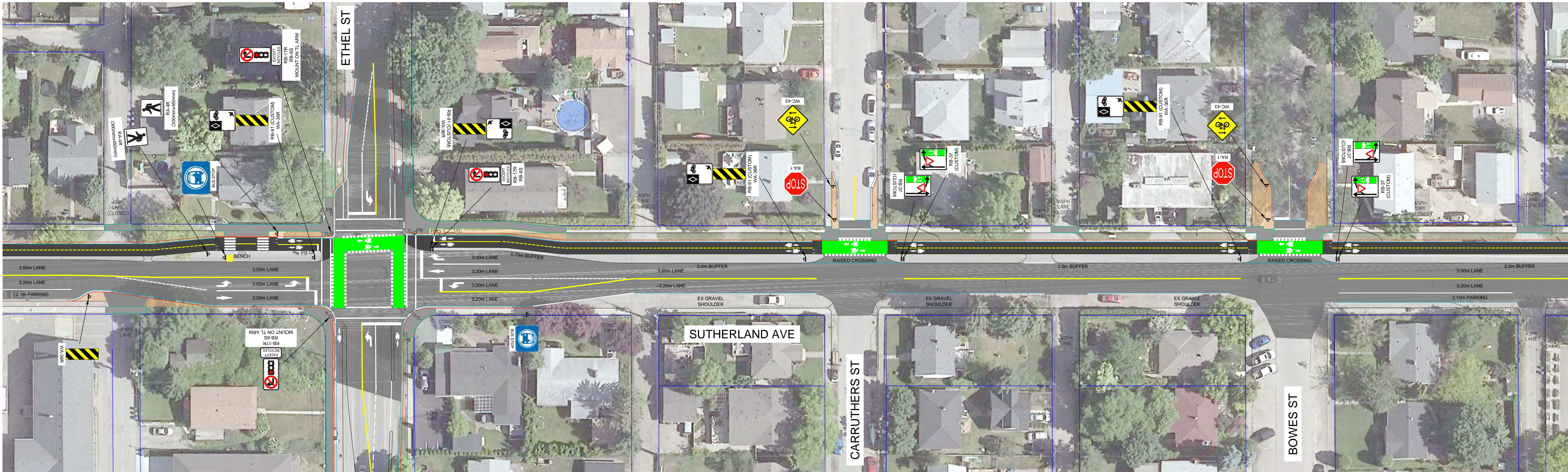


OPTION A
Two-Way Traffic
Parking on South Side

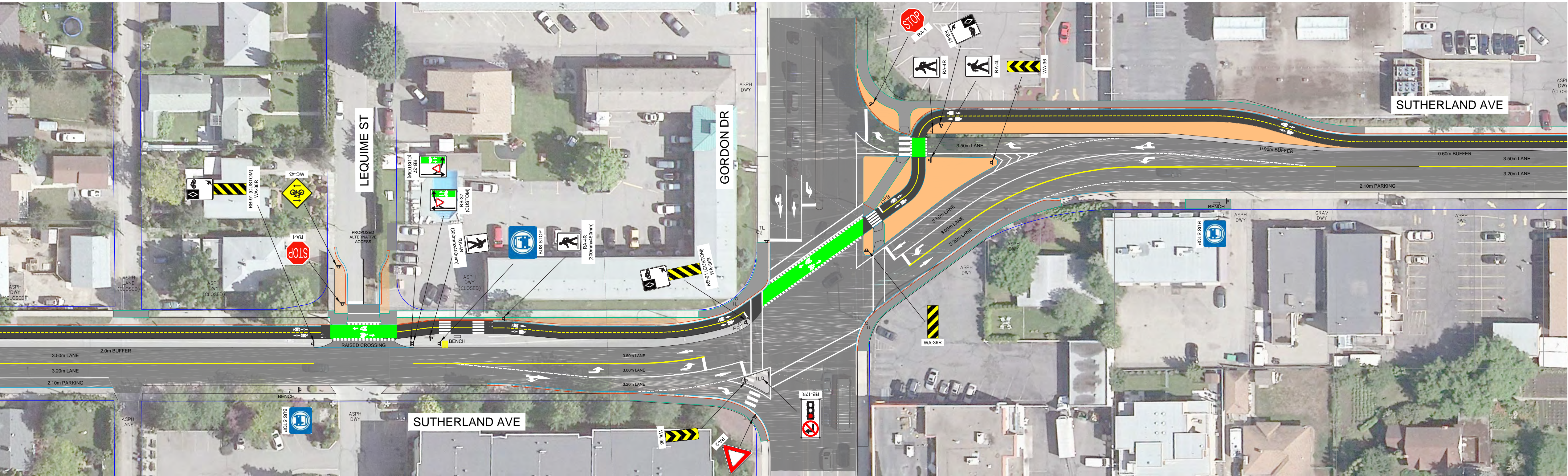


OPTION B
One-Way Westbound Traffic
Parking on Both Sides
Potential cost to move curb and may
impact existing street trees

ROAD SEGMENTS - SUTHERLAND AVENUE



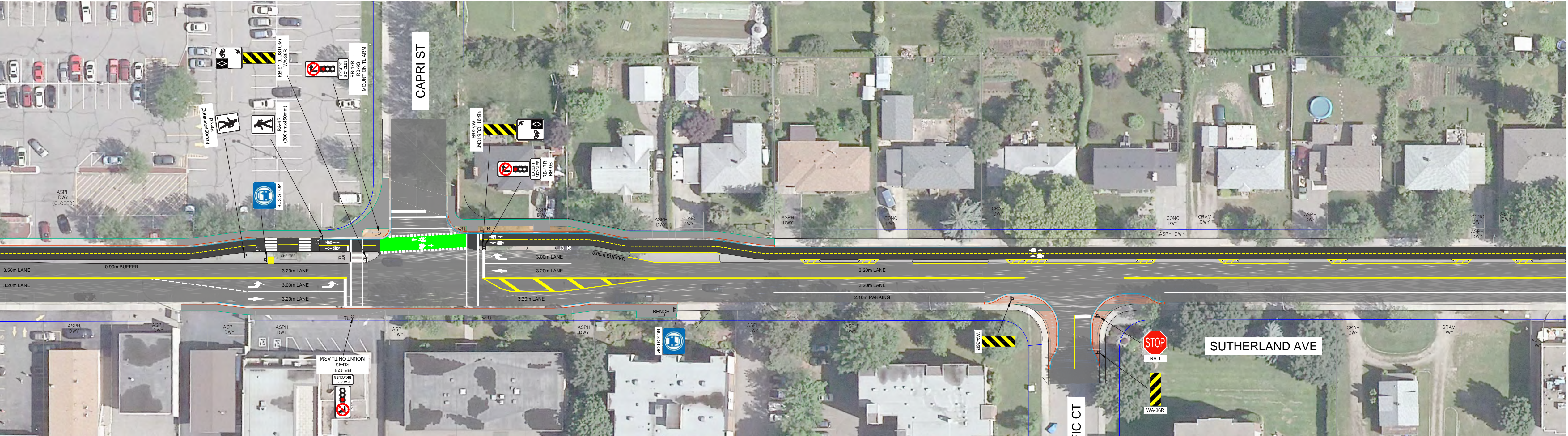
ETHEL ST
Caruthers St
Bowes St



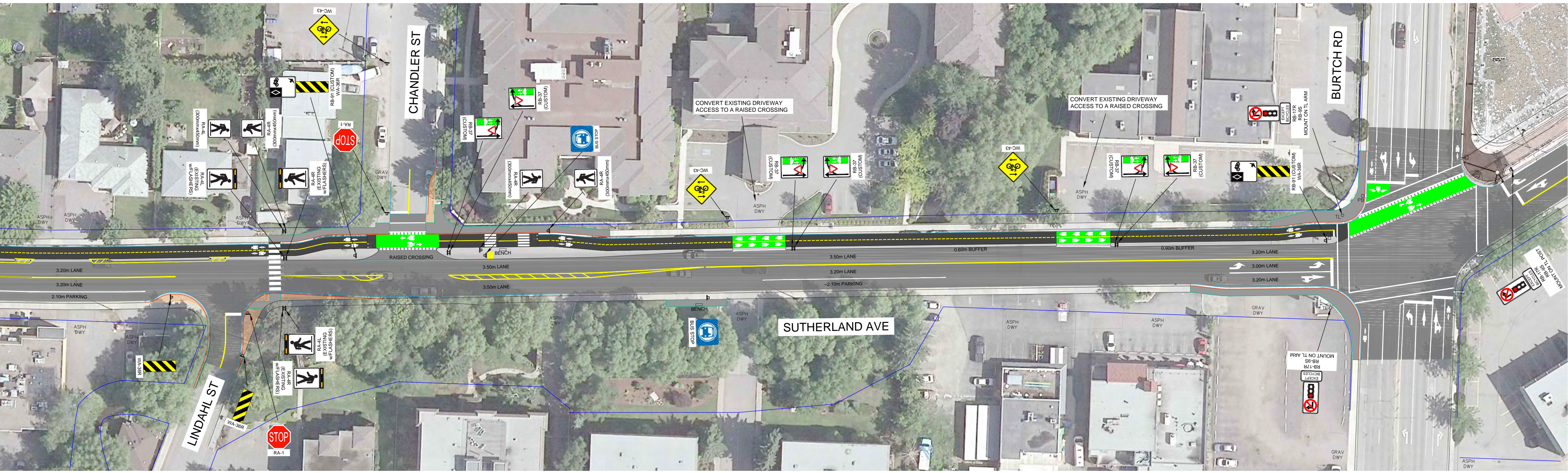
Lequime St
GORDON DR
Ultimate Design

Sutherland Avenue
Protected Bike Lane

ROAD SEGMENTS - SUTHERLAND AVENUE



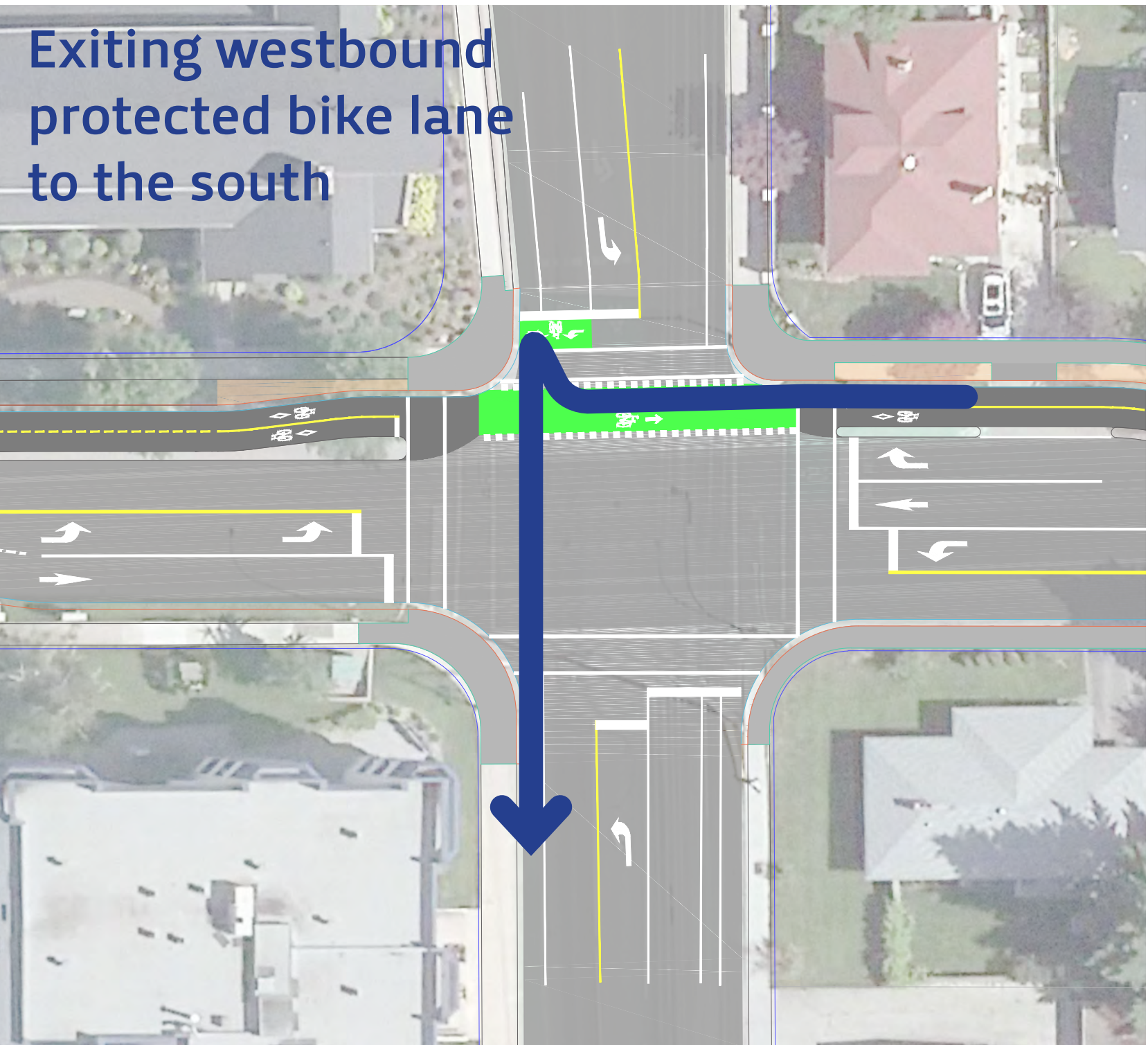
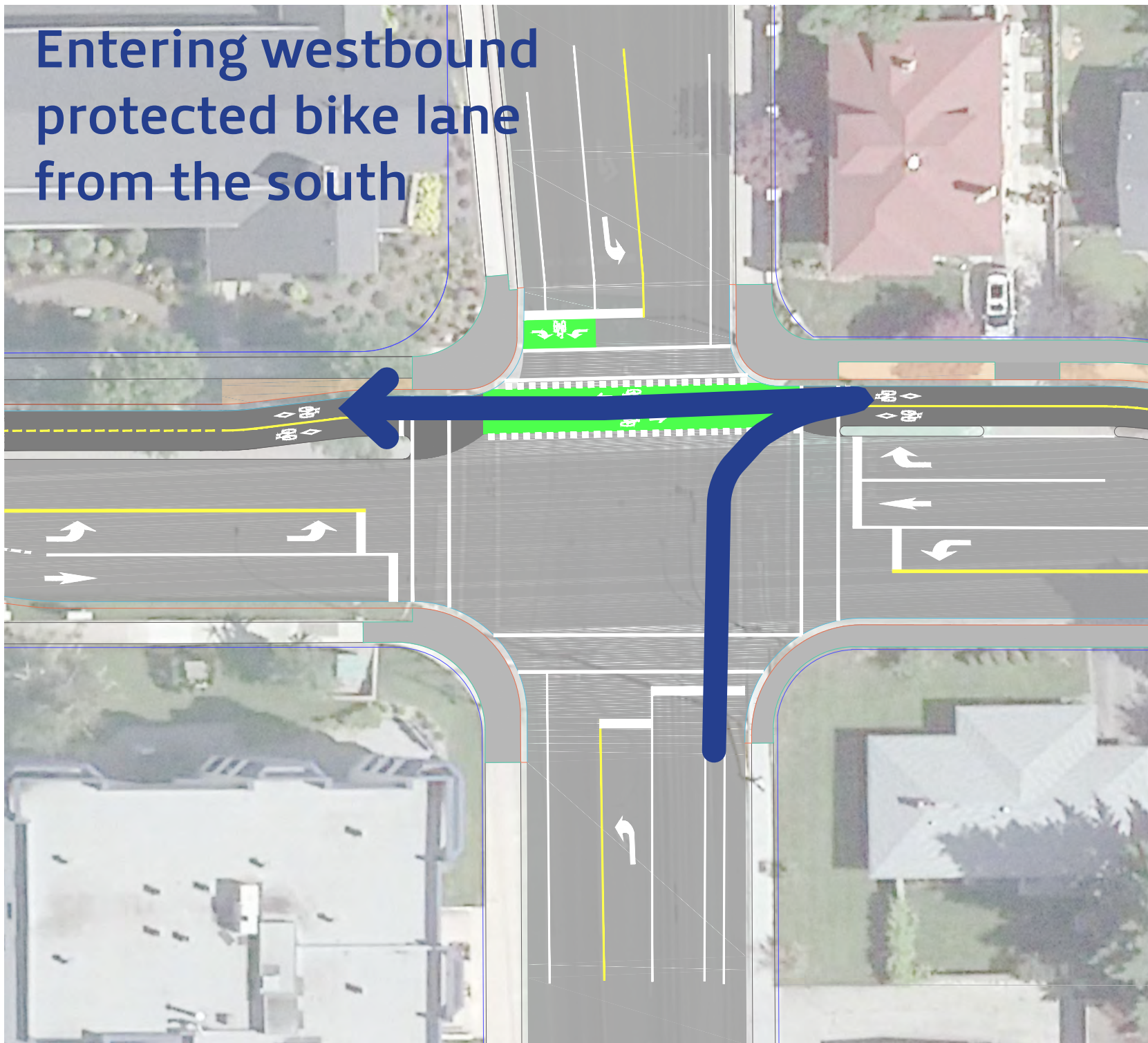
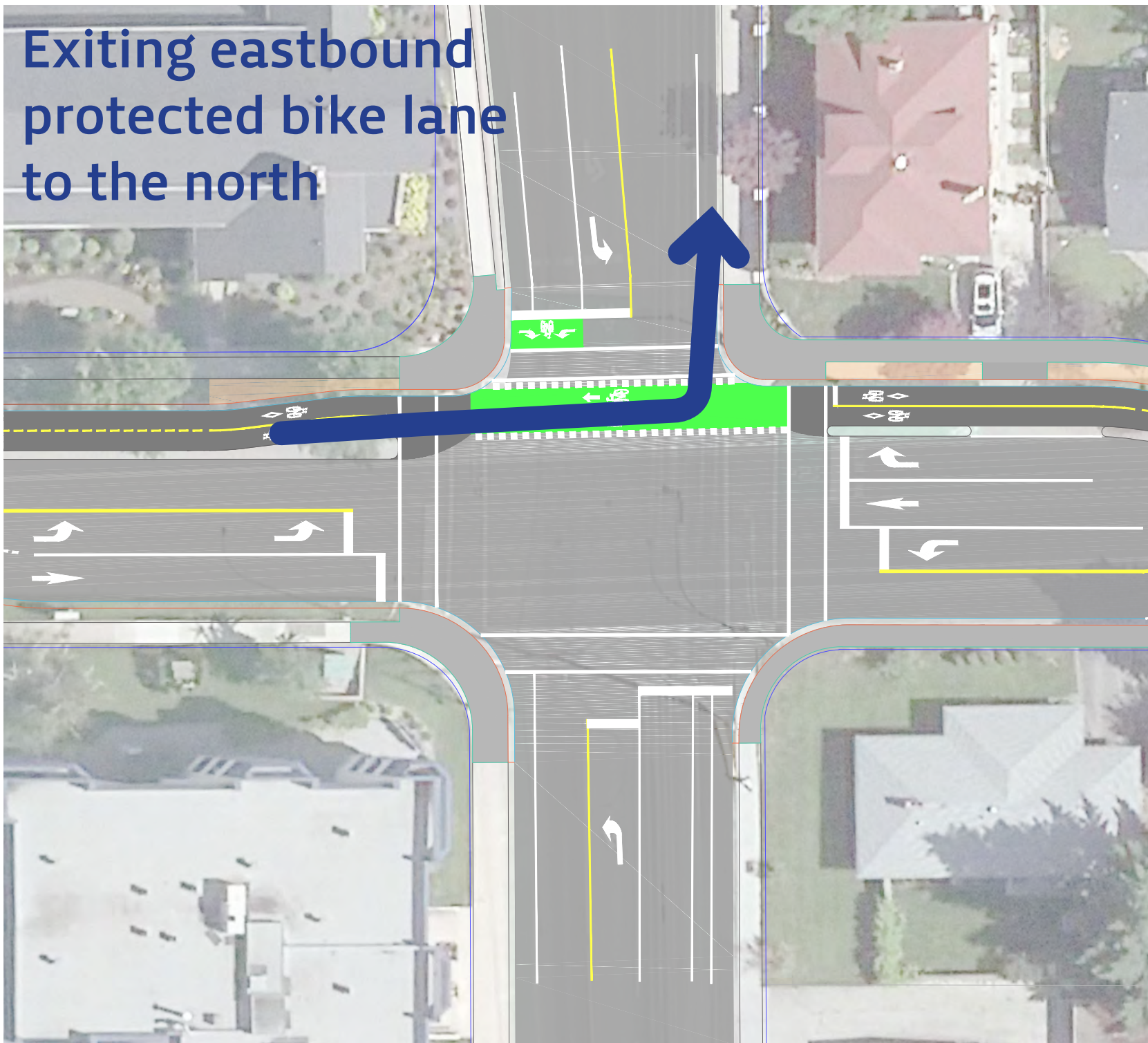
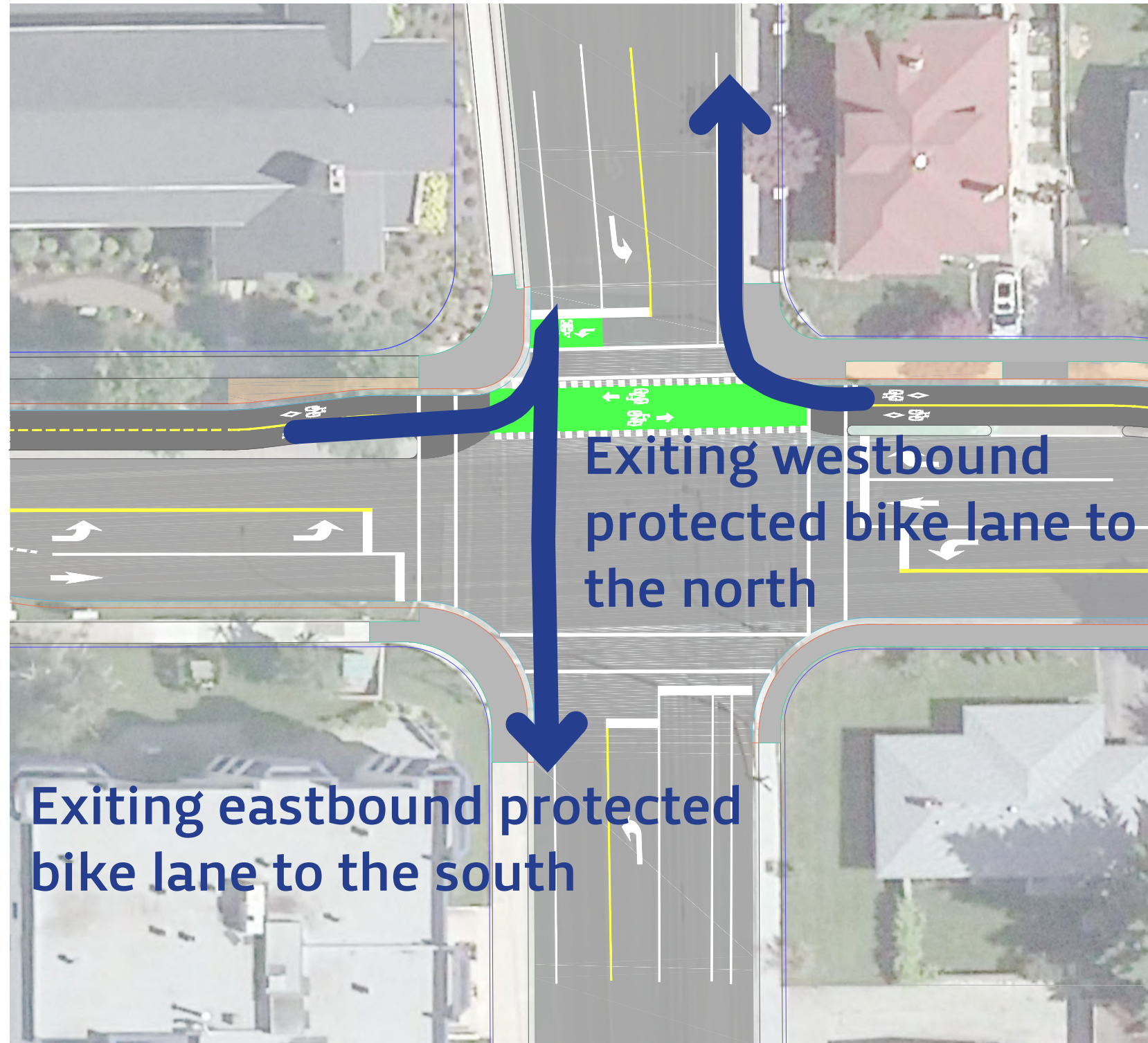
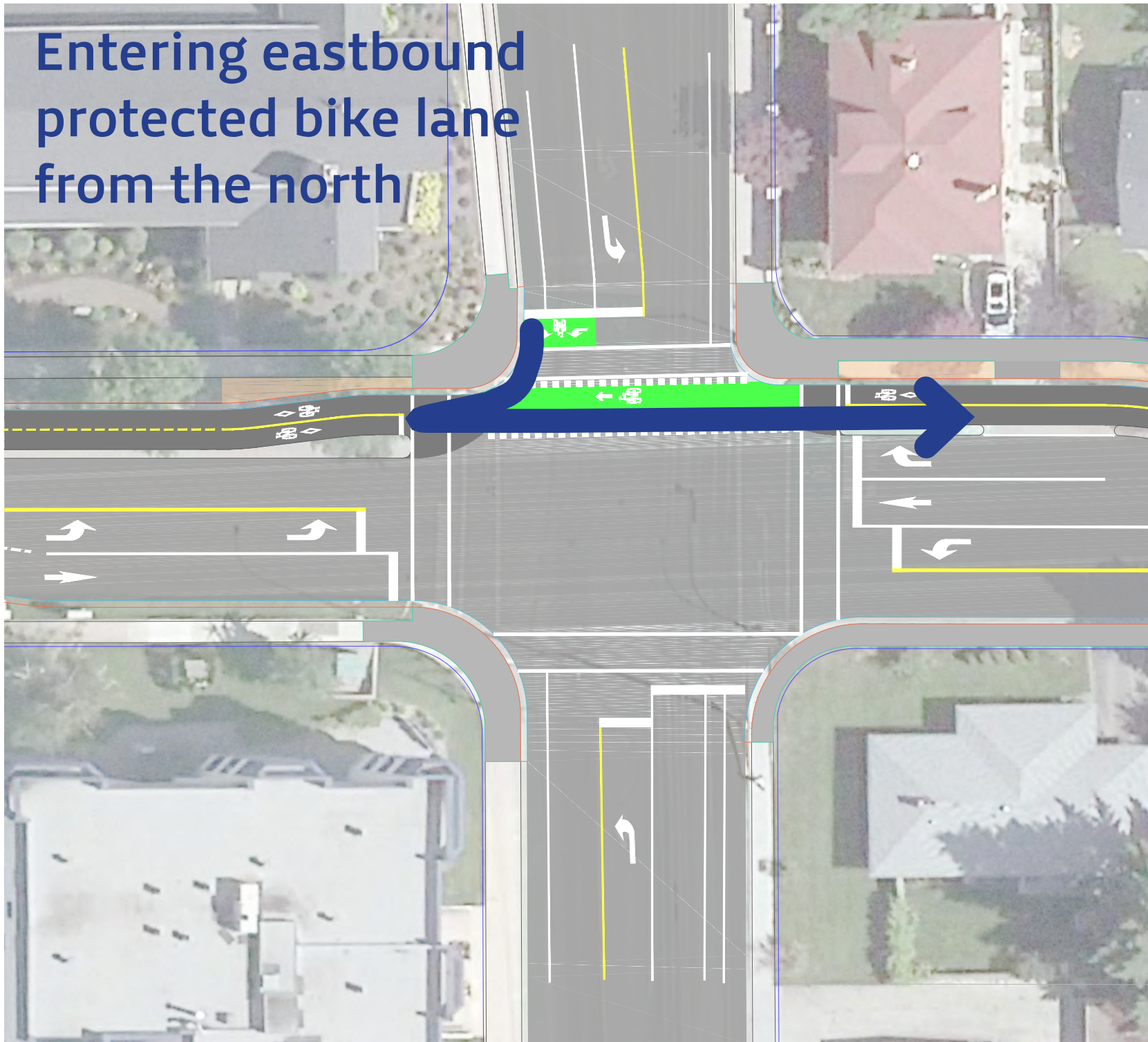
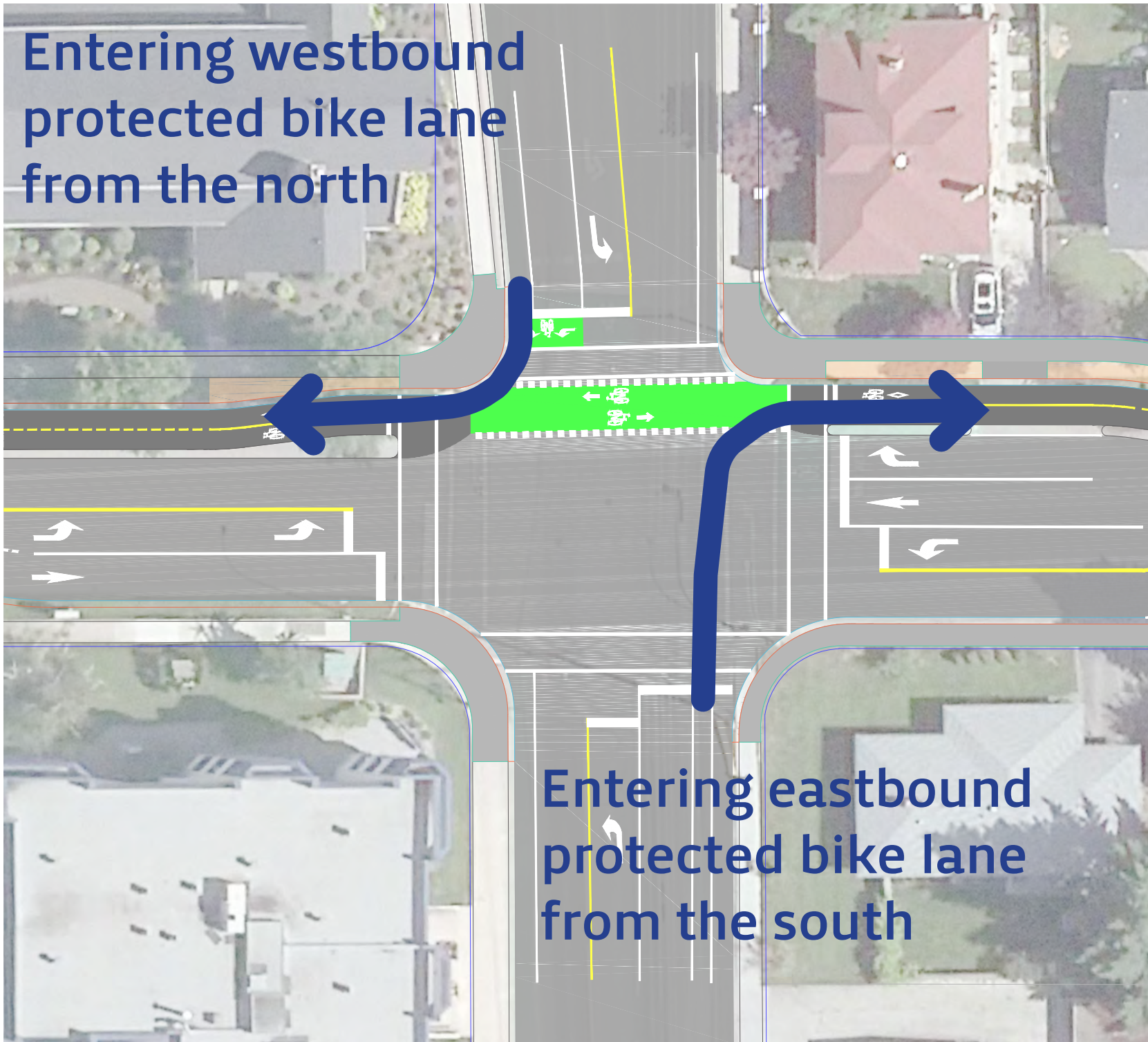
CAPRI ST
Pacific Ct



Lindahl St
Chandler St
BURTCH RD

Sutherland Avenue
Protected Bike Lane

TURNING MOVEMENTS



How can residents get involved?

1. Complete survey at the open house or online at:

<https://www.surveymonkey.com/r/SutherlandAve>

2. Online survey open until:

Friday, May 25, 2018

3. Follow the progress of this project at:

kelowna.ca/cityprojects>Sutherland

Poster boards and the survey from this open house will be available online