

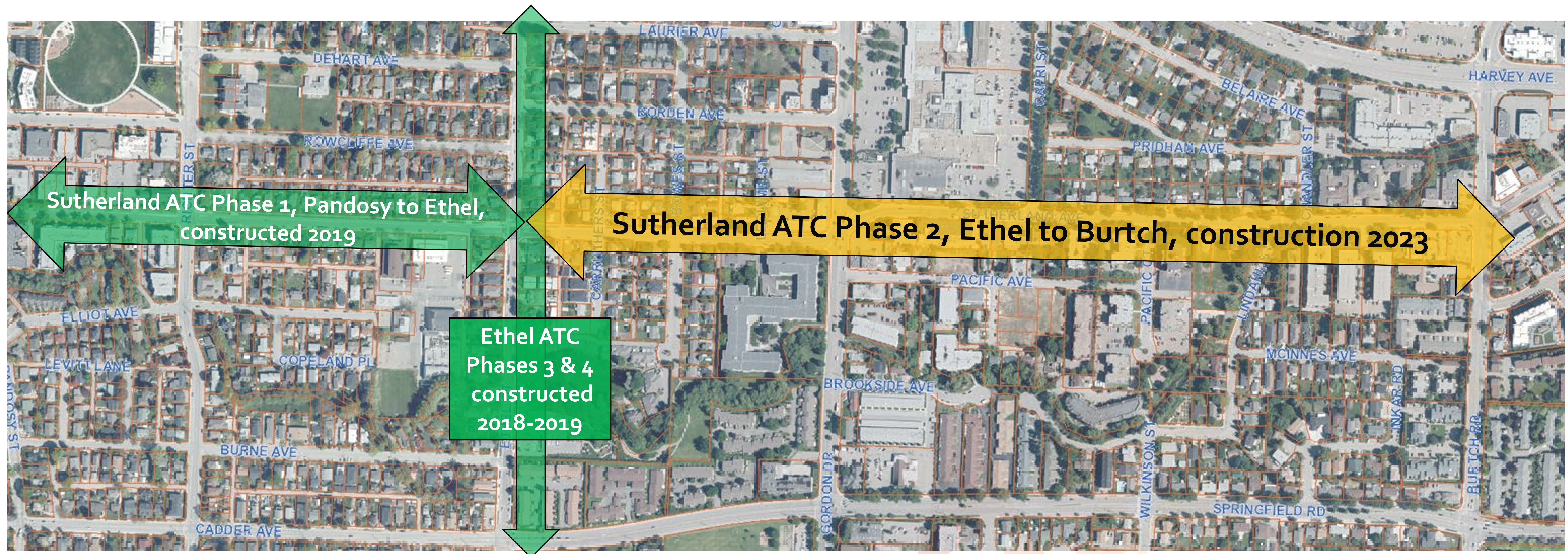
Sutherland Avenue

Active Transportation Corridor

Phase 2: Ethel-Burtch

*Project design &
construction details*

PROJECT AREA



Guiding policies:

- ▶ A key objective identified in the City's 2016 [Pedestrian and Bicycle Master Plan](#) (PBMP) and Transportation Master Plan (in development) is to ensure that walking and bicycling are safe, convenient and practical modes of travel. Active transportation corridors increase the number of people walking and bicycling by providing comfortable and safe connections between key destinations for people of all ages and abilities.

Sutherland ATC

Phase 2: Ethel Street to Burtch Road

2021 - 2022

BACKGROUND

Public engagement – what we heard

April-May 2016

We asked for your feedback on the Sutherland Active Transportation Corridor concept design and received 370 survey responses as well as numerous ideas on both social media and at getinvolved.kelowna.ca.



83% are generally in favour of protected bike lanes



86% currently use cars along Sutherland Avenue



40% use Sutherland Avenue daily for their trips



69% liked the concept design



67% would be encouraged to walk and bicycle more on this corridor

May 2018:

We asked about your preference for two design options for the segment of Sutherland Ave between Pandosy Street and Richter Street, and asked about your level of support for the project.



88% are generally in favour of protected bike lanes on Sutherland



83% are likely to walk / run, or ride a bicycle on Sutherland more often when the project is complete



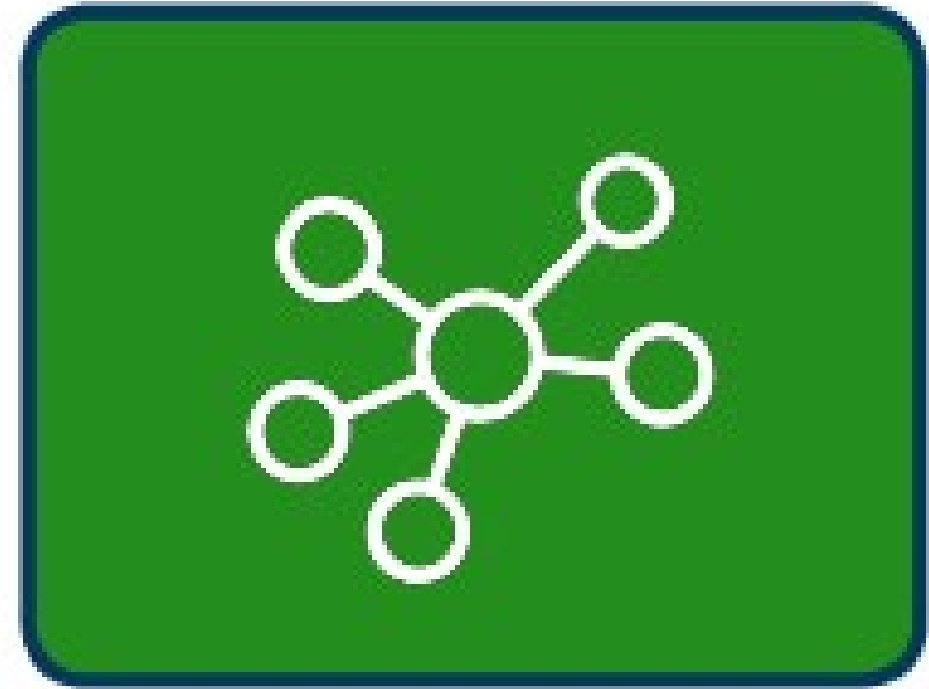
Sutherland ATC

Phase 2: Ethel Street to Burtch Road

2021 - 2022

PROJECT OVERVIEW

Sutherland Avenue:



- Connects with Abbott Street Recreational Corridor, Ethel Street ATC, City Centre, and Capri Landmark.



- A more comfortable east-west bike route than Harvey Avenue and Springfield Road.



- A two-way protected bike lane with physical barrier from adjacent traffic located along the north side of Sutherland Avenue.

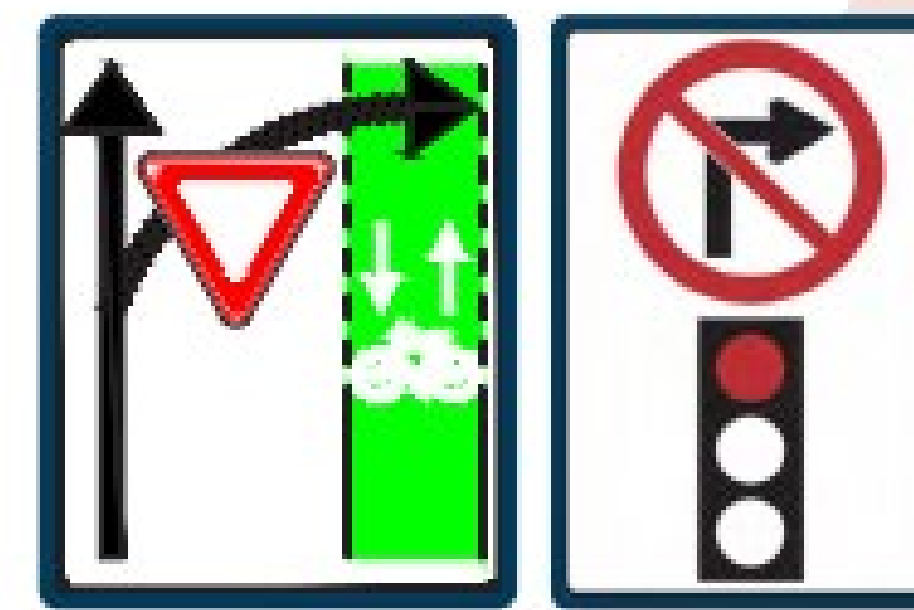


- Maintain parking on one side, reduce impact to properties and property acquisition, and lower construction costs.

Highlighted Features:



- Provide safe and separated crossing for people on bicycles and people walking.



- At traffic signal intersections:

- » Right turns restricted on red signal display.
- » Right turn vehicles must yield to bikes in green bike lanes and to pedestrians in crosswalk.
- » East bound left turns can only turn on green arrow.



- Bike turn boxes provide a safe way for people on bikes to stage turns to and from the two-way protected bike lane.

Sutherland ATC

Phase 2: Ethel Street to Burtch Road

2021 - 2022

INTERIM DESIGN – SUTHERLAND AVENUE

Lequime Street to Burtch Road

Some segments between Lequime Street and Burtch Road will have concrete barriers in the interim until redevelopment at Capri Mall triggers road reconstruction and utility upgrades.

This interim approach will provide cost savings for the project, and the concrete barriers will be replaced with permanent concrete curbing once redevelopment occurs.

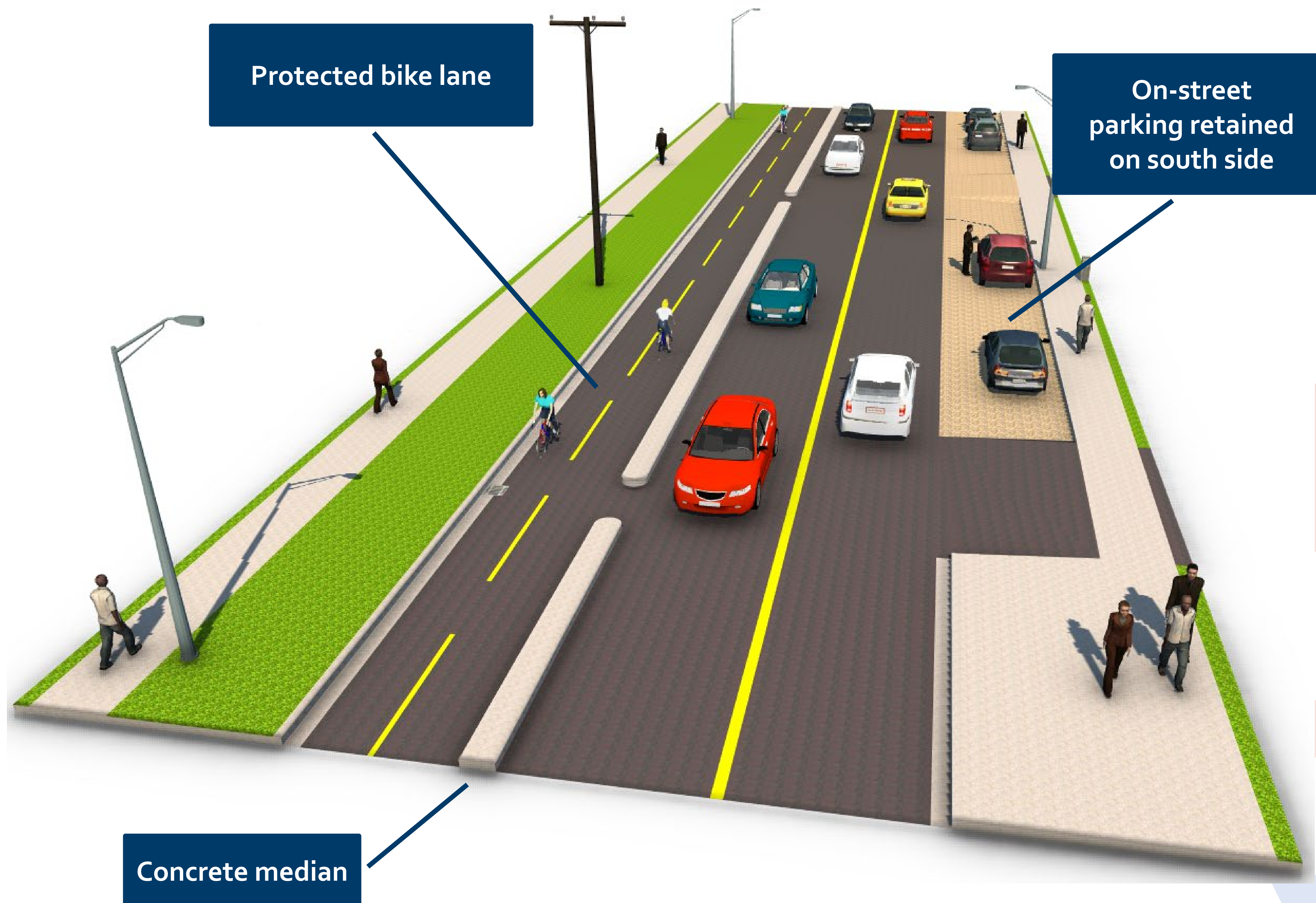


STREET SEGMENTS – SUTHERLAND AVENUE

Ethel Street to Gordon Drive

Reconfiguration between Ethel Street & Gordon Drive will provide:

- ▶ Protected two-way bike lane on north side of Sutherland Avenue separated by concrete median.
- ▶ Transit stop platform west of Gordon.
- ▶ On-street parking on south side of Sutherland Avenue.
- ▶ Maintain two-way traffic.

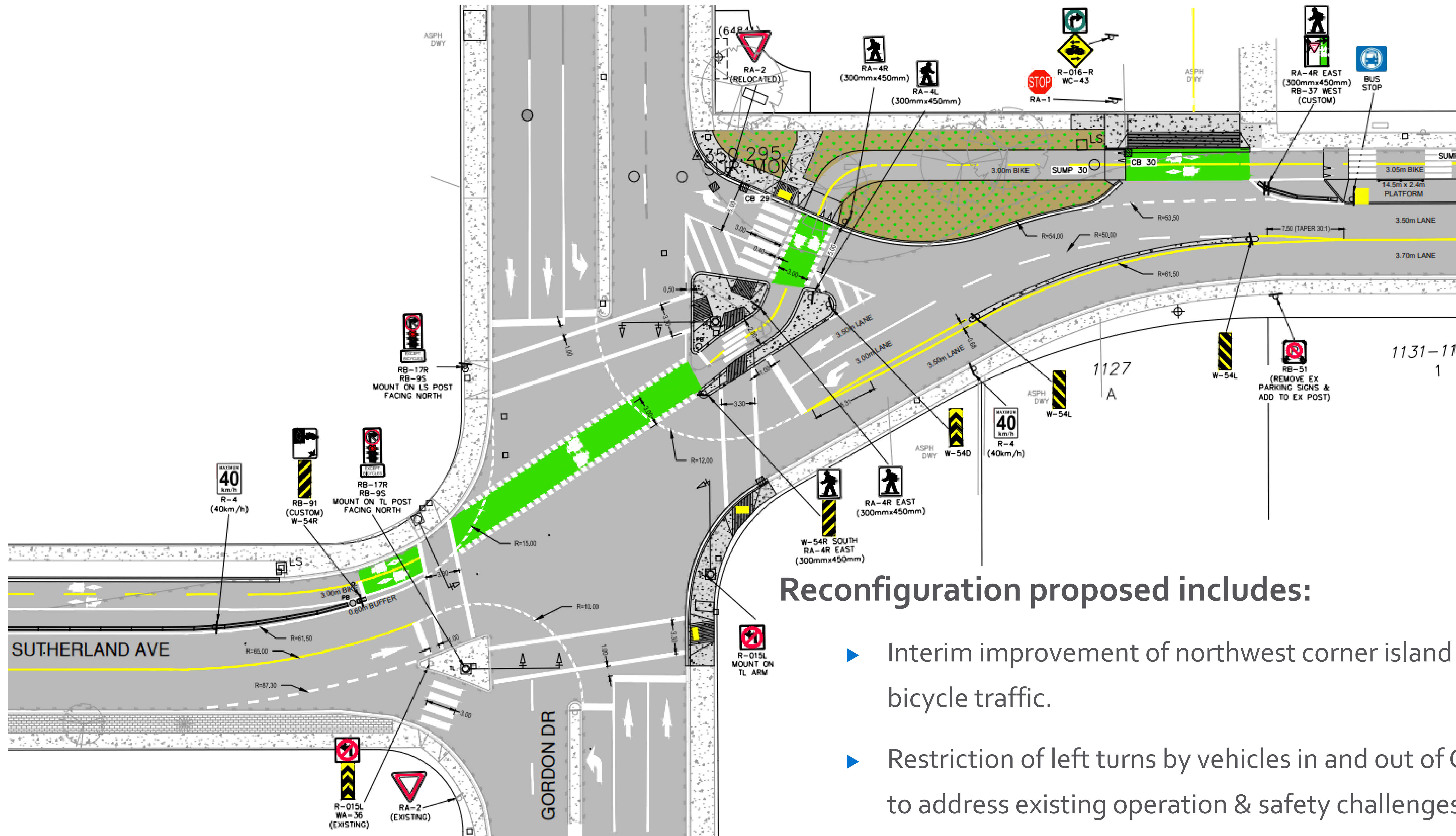


Sutherland ATC

Phase 2: Ethel Street to Burtch Road

2021 - 2022

INTERSECTION – GORDON DRIVE / SUTHERLAND AVENUE

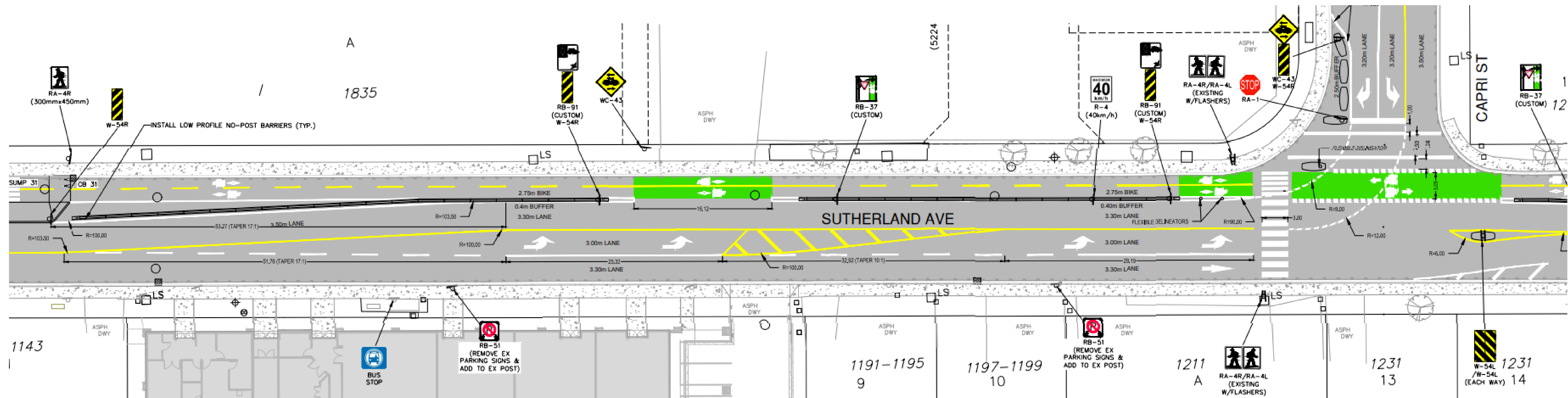


Reconfiguration proposed includes:

- ▶ Interim improvement of northwest corner island to accommodate bicycle traffic.
- ▶ Restriction of left turns by vehicles in and out of Capri Centre Mall to address existing operation & safety challenges through access management. Right in / right out access will be maintained.
- ▶ Accommodate safe bike crossing of Gordon with interim restriction of eastbound left turns by vehicles at Gordon signal.

STREET SEGMENTS – SUTHERLAND AVENUE

Gordon Drive to Capri Street



Proposed changes between Gordon Drive and Capri Street

- ▶ To accommodate high turning volumes, left-turn vehicle lanes have been added, resulting in the loss of parking on the south side of Sutherland Avenue in this segment.
- ▶ New left turn lane at Capri Centre Mall driveway.
- ▶ New left turn lane at Capri Street intersection.

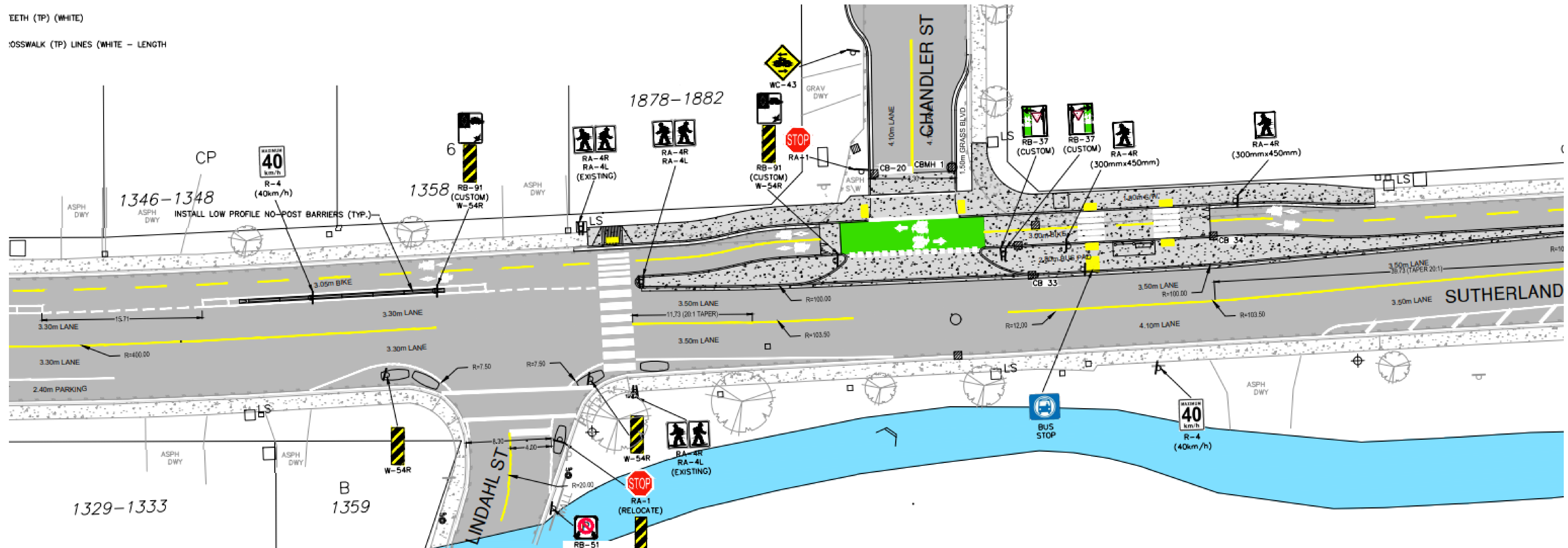
Sutherland ATC

Phase 2: Ethel Street to Burtch Road

2021 - 2022

STREET SEGMENTS – SUTHERLAND AVENUE

Capri Street to Chandler Street



Reconstruction between Capri & Chandler streets will provide:

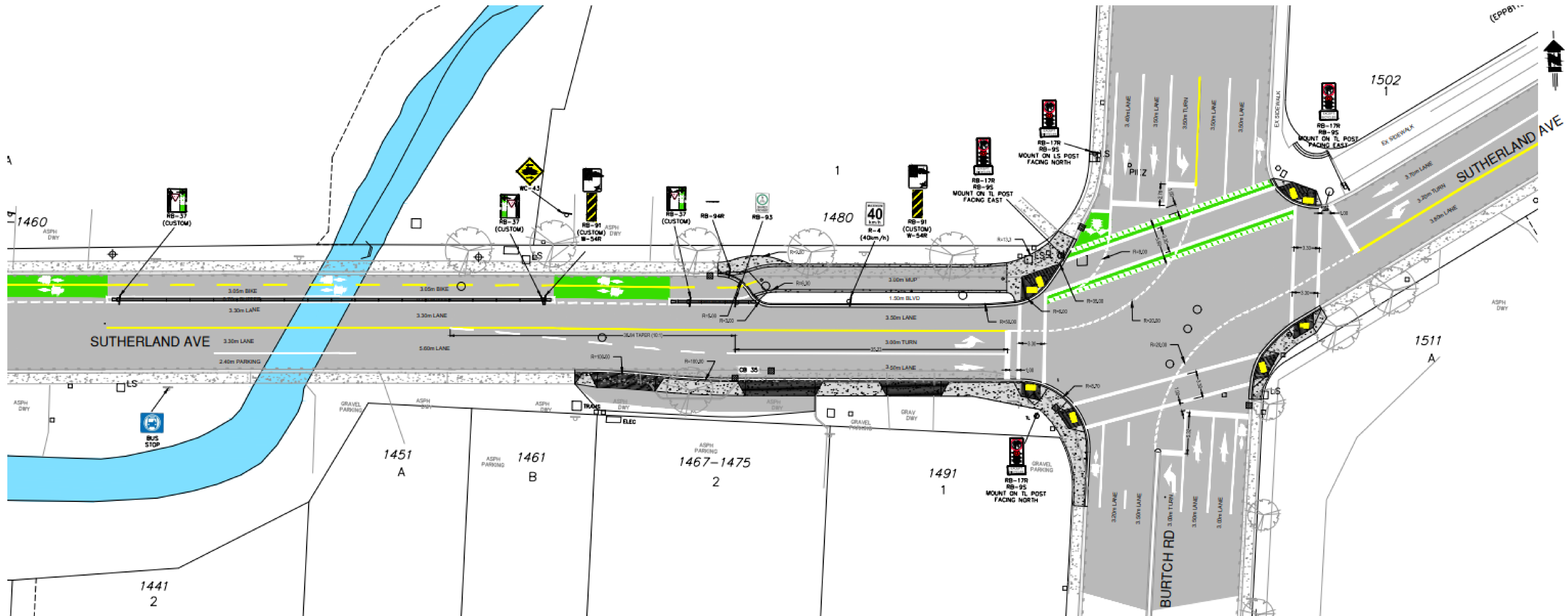
- ▶ Raised bike crossing at Chandler Street intersection.
- ▶ New transit stop platform.
- ▶ Maintain parking between Pacific Court and Lindahl Street.

Sutherland ATC

Phase 2: Ethel Street to Burtch Road

2021 - 2022

Chandler Street to Burtch Road

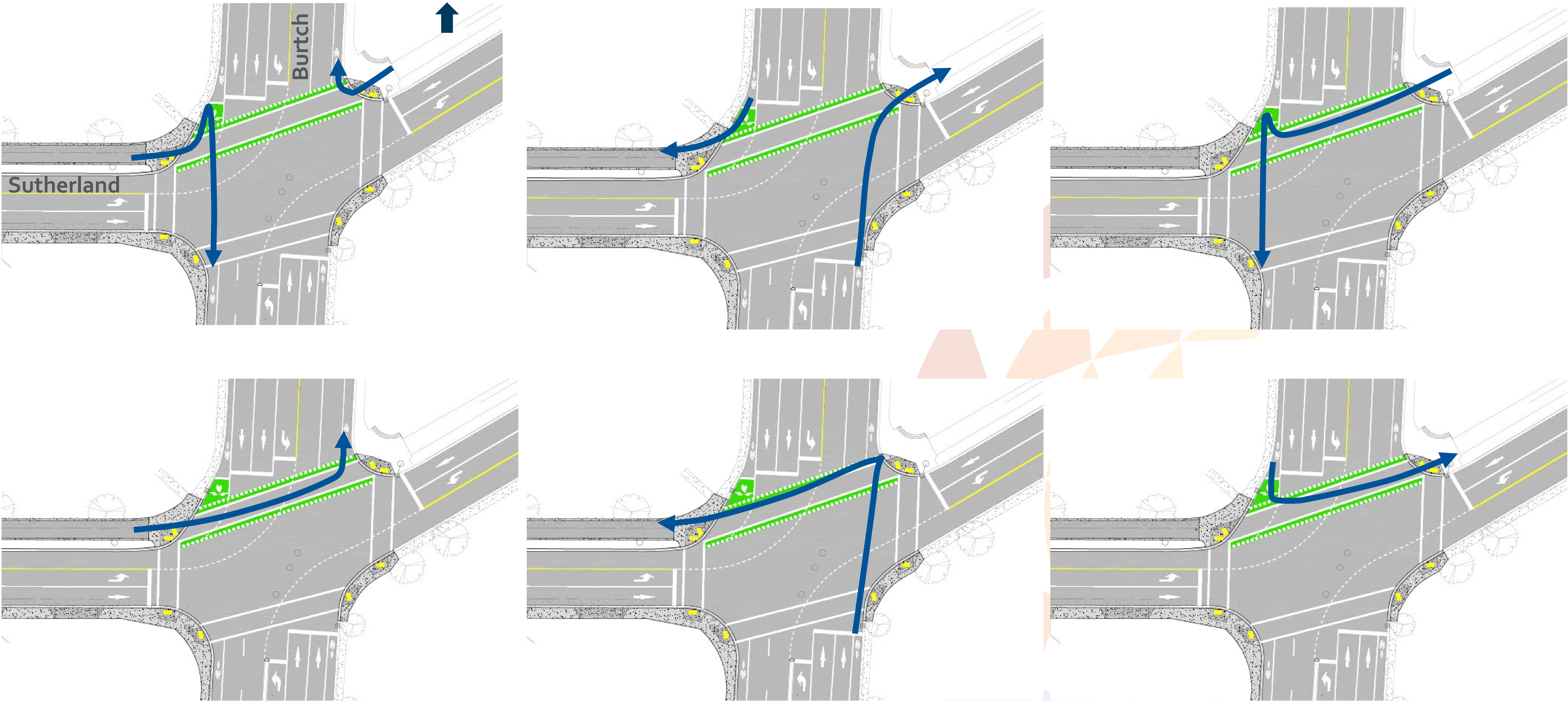


Reconstruction between Chandler Street & Burtch Road will provide:

- ▶ Connection to existing multi-use path linking to Dayton Street pedestrian and bike overpass.
- ▶ Accommodate safe bike crossing of Burtch with protected signal phase for eastbound left turn.
- ▶ Accessibility improvements with new letdowns.

HOW DO CYCLISTS TURN THROUGH TRAFFIC SIGNALS?

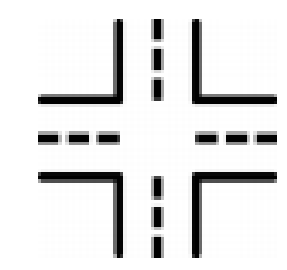
Sutherland/Burtch Intersection



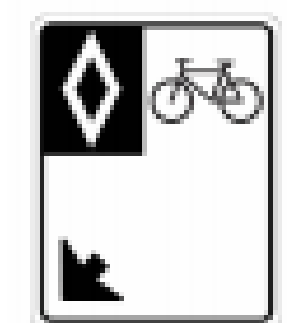
CONSTRUCTION

Timeline: Summer/Fall 2023

Associated work



- ▶ Resurfacing pavement from Ethel Street to lane East of Bowes St and from Lindahl St to Burtch Road.



- ▶ Intersection modifications at Gordon / Sutherland, Capri / Sutherland, Burtch / Sutherland, to facilitate the new protected bike lane crossings and respective traffic / bike / pedestrian signals and timing.



- ▶ Modifications to the traffic lanes and parking to facilitate the two-way protected bike lane.
- ▶ Laneways on north side between Carruthers Street and Lequime Street to have Sutherland Ave access closed.
- ▶ Raised crosswalk at the intersection of Chandler Street and Sutherland Avenue.

**Stay
updated!**

Online: visit kelowna.ca/cityprojects

Contact the project manager: Derek Corning, P.Eng.
Dcorning@kelowna.ca

Sutherland ATC

Phase 2: Ethel Street to Burtch Road

2021 - 2022