

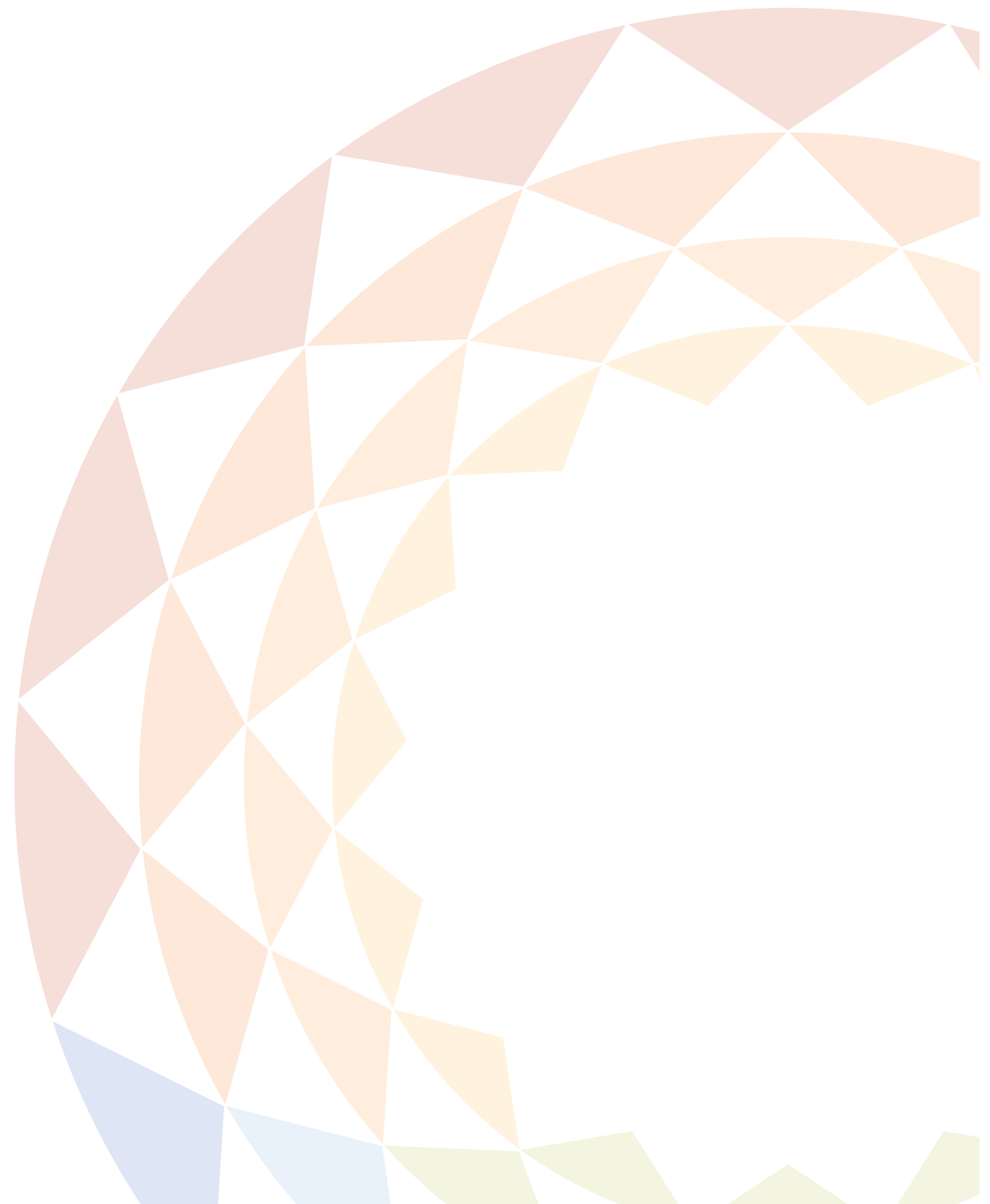
INFORMATION SESSION

Loseth Road Slope Stability

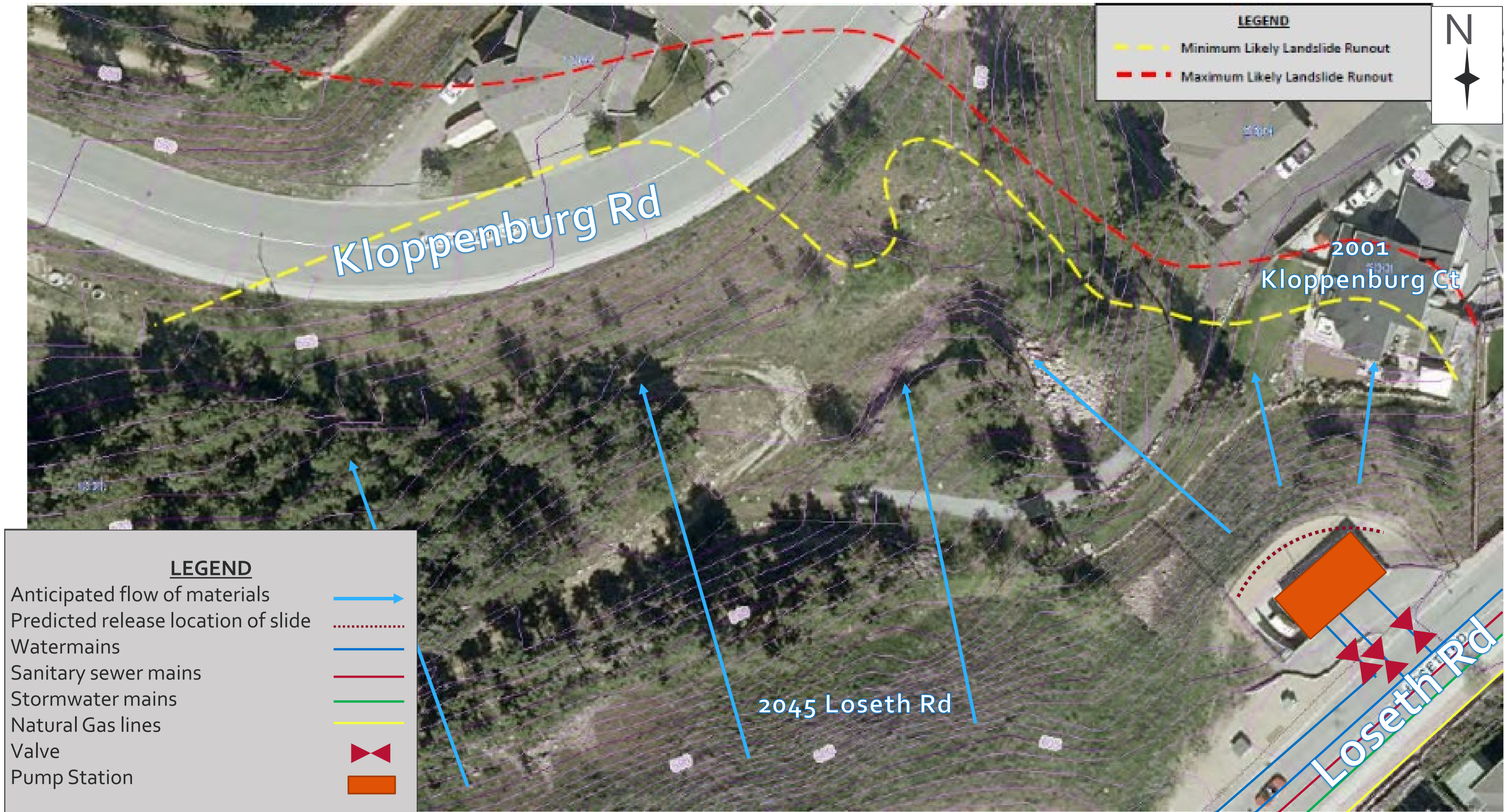
*Black Mountain Elementary
School Library*

From 5 to 6:30 p.m.

Welcome



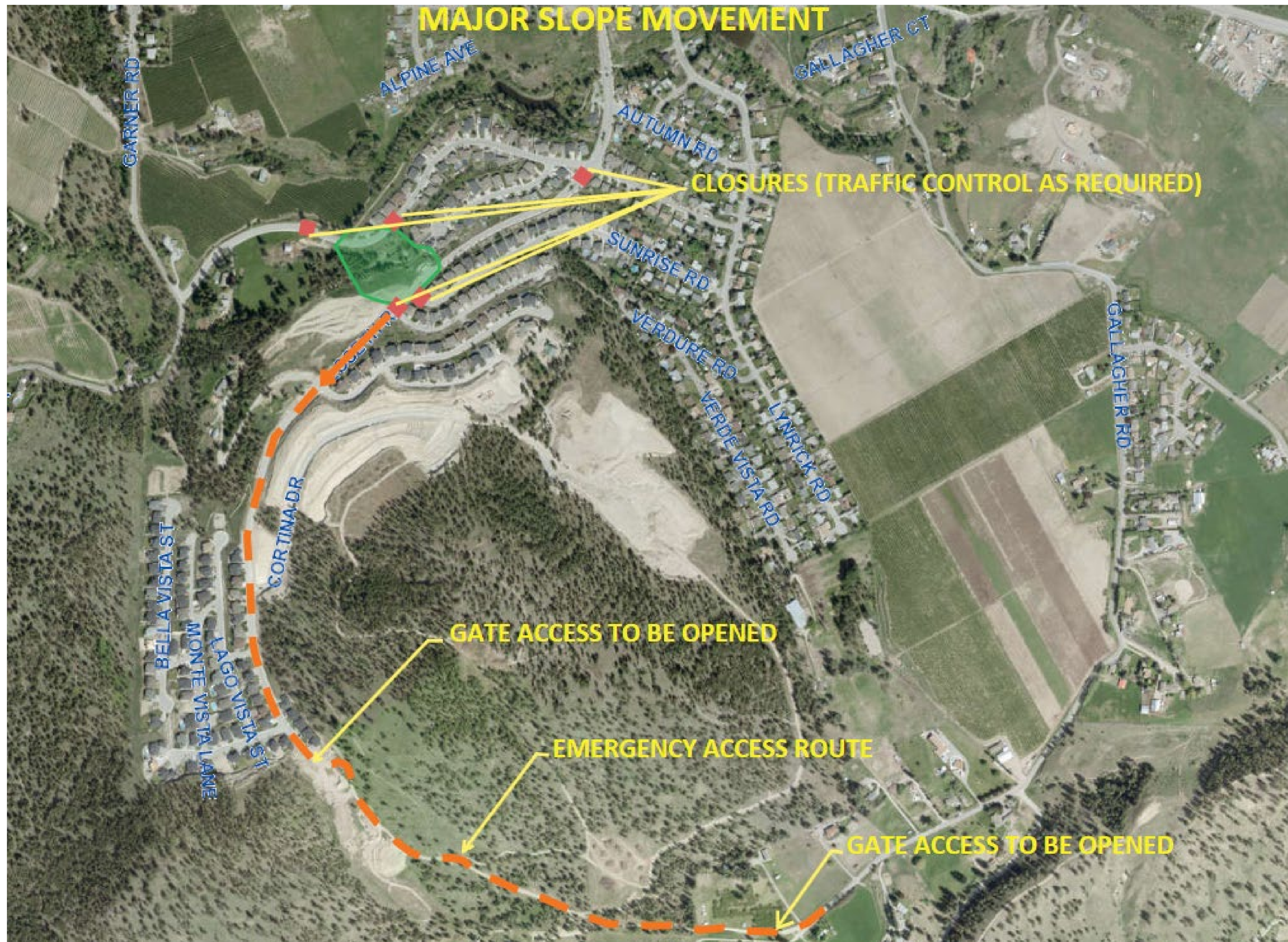
Immediate Area



Loseth Road Slope Stability

Public Information Session – Mar 7, 2019

Major Slope Movement Detour



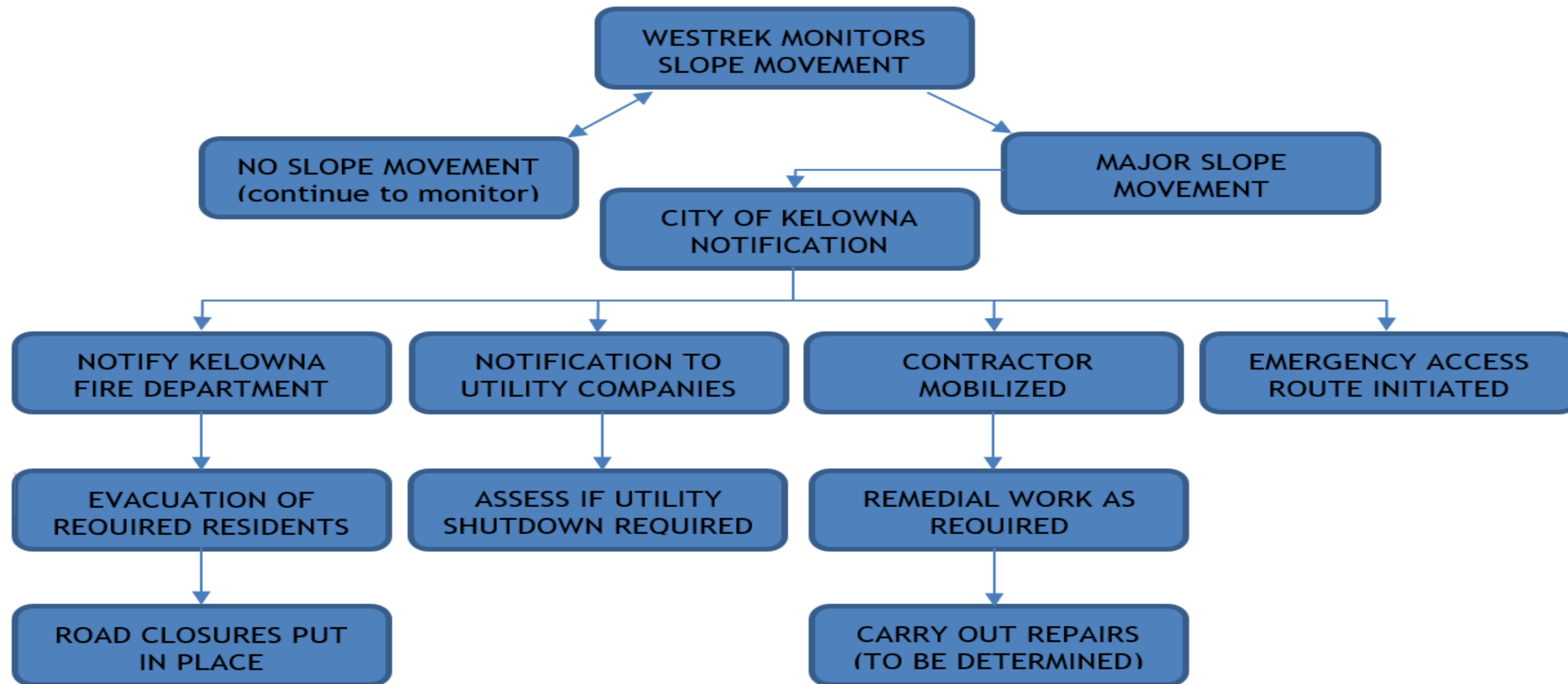
Loseth Road Slope Stability
Public Information Session – Mar 7, 2019

Emergency Response Plan Major Slope Movement

Major slope movement is defined as:

- ▶ Significant changes in the slope stability instrumentation or ground water pressure as monitored by Westrek Geotechnical
- ▶ Slope failures including sloughing and landslides within the unstable slope areas

If any of these occurrences are observed, the following steps should be taken:



Loseth Road Slope Stability

Public Information Session – Mar 7, 2019

Minor Slope Movement Detour



Loseth Road Slope Stability

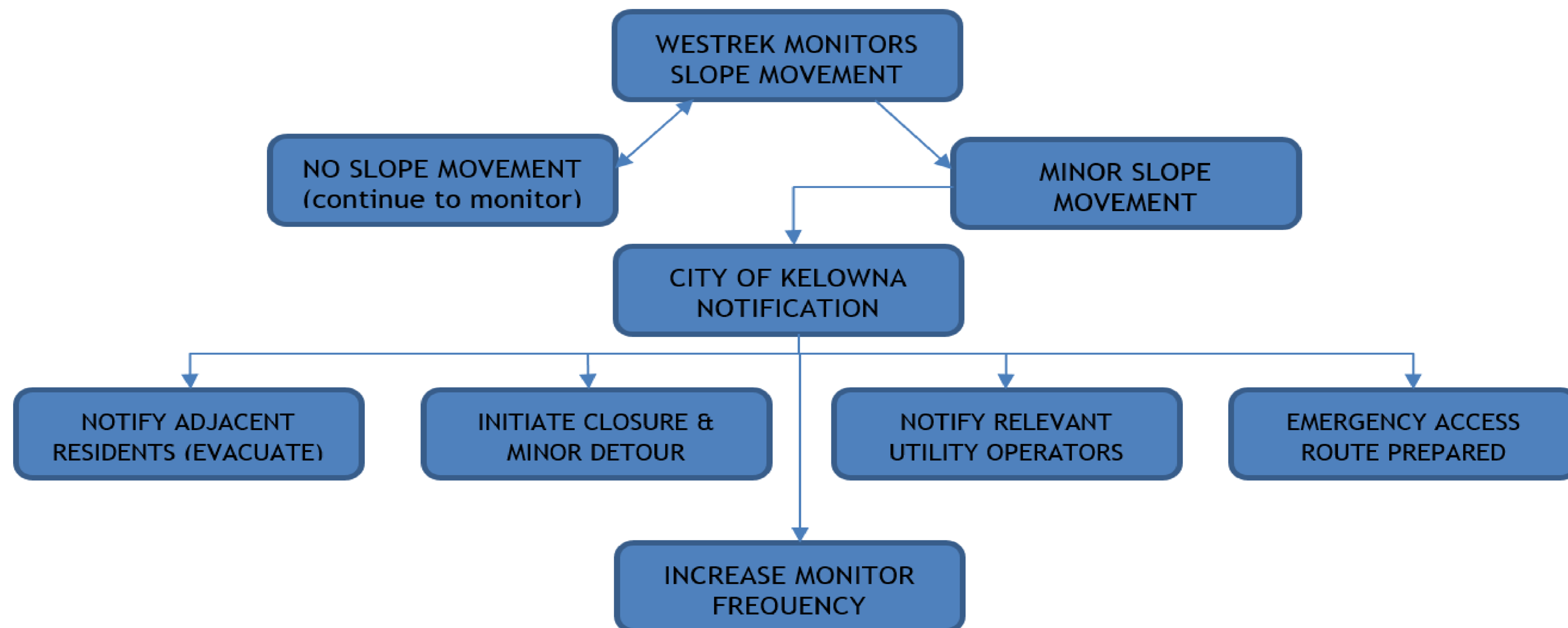
Public Information Session – Mar 7, 2019

Emergency Response Plan Minor Slope Movement

Minor slope movement is defined as:

- ▶ Any changes in the slope stability instrumentation monitored by Westrek Geotechnical
- ▶ An increase in the size of stress cracks or scarps on the existing slope
- ▶ Localized sloughing and slippage within the unstable slope areas

If any of these occurrences are observed, the following steps should be taken:



Loseth Road Slope Stability

Public Information Session – Mar 7, 2019

Black Mountain Irrigation Pump Station

In the event of a slide causing damage or failure to the pump station, the following steps will be taken by the irrigation district:

Site Assessment

- ▶ A 24 hour on-call operator will arrive at the site within an estimated 20 minutes
- ▶ The site will be assessed immediately for severity of failure as well as safety for staff and public

Notifications

- ▶ If appropriate, on-call operator will notify fire department immediately as well as other support staff members

Water Main Shut Downs

- ▶ Three gate valves will be shut down as needed to isolate and protect against issues

Temporary Water Supply

- ▶ Depending on the severity of the damage or break, it may be possible to utilize a booster station to ensure a majority of the residents in the area remain with functioning water

Repairs

- ▶ Once the site has been deemed safe, Black Mountain Irrigation District crews will work toward repairing damage and reconnecting residents to water sources

Loseth Road Slope Stability

Public Information Session – Mar 7, 2019



Additional Information

For information and updates regarding slope stability, please leave your email or contact number on the sheet below:

Project Information Inquiries

- ▶ If you require assistance, or to report an issue, please contact
City of Kelowna Development Technician - Jim Hager
250-862-3338 | jhager@kelowna.ca

Subscribe to Updates

- ▶ Visit kelowna.ca to register for City news, updates and notifications

Loseth Road Slope Stability

Public Information Session – Mar 7, 2019

