

Final Schematic Design

Sept 29th, 2023



Glenmore Recreation Park

PHASE 5 & PHASE 6

PREPARED BY

VDZ+A

Contents

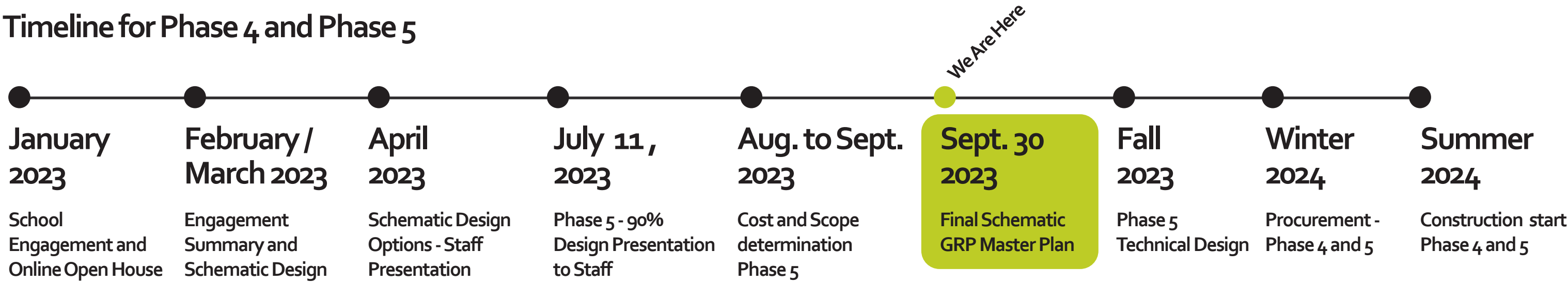
1. Timeline and Process recap.
2. Engagement Summary
3. Site overview & context
4. Vision
5. Early Schematic Design / 'Big Ideas'
6. Design Inspiration
7. 2023 Master Plan
8. Phase 5 - Construction Plan
9. Grading and Circulation
10. Park programming
11. Park Sections
12. Cost Summary

Timeline

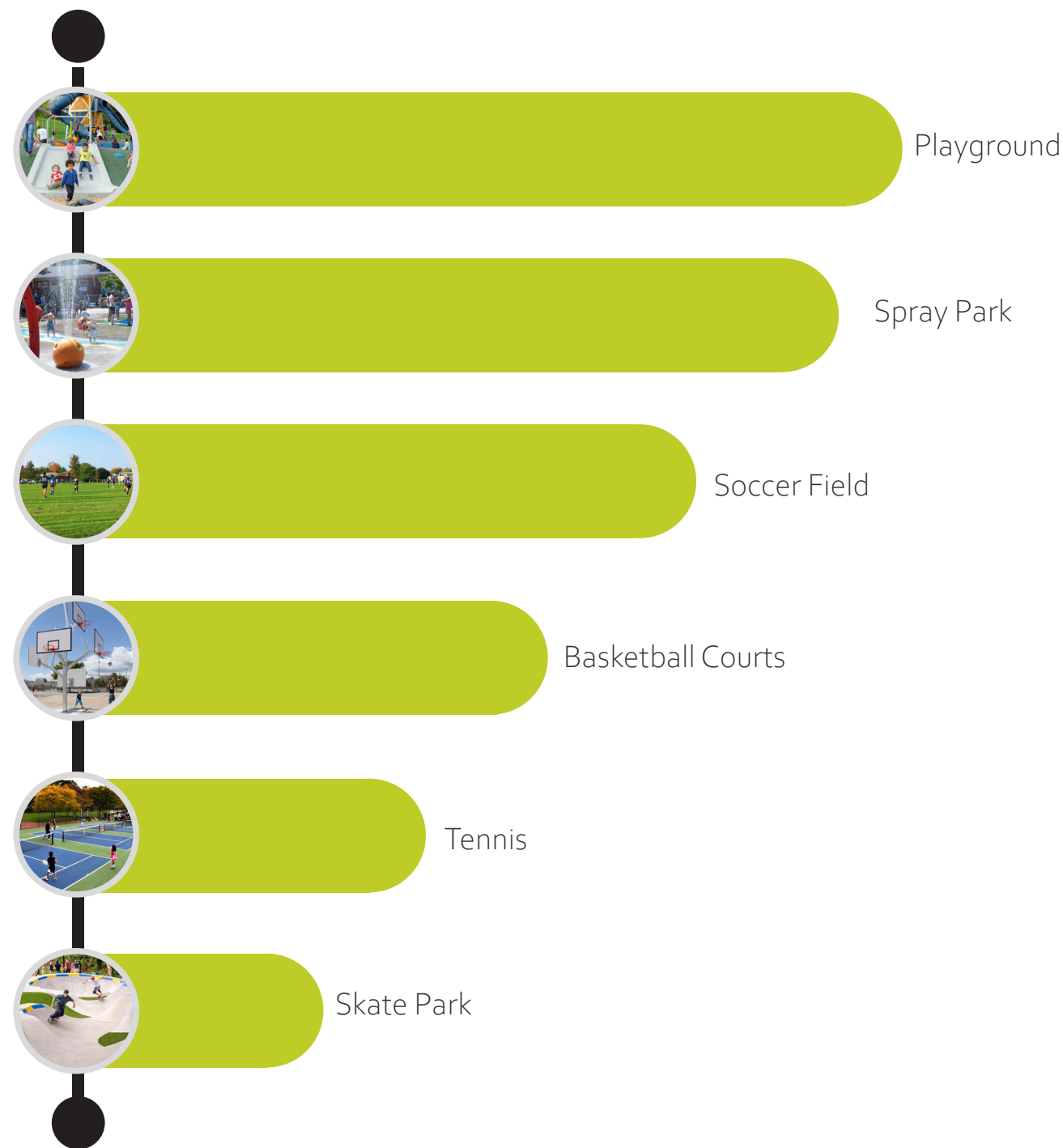
GRP Development Timeline

2011	Non-Farm Use Application Approval
2016	Revised Concept Plan Approval
2017	Phase 1 – ALR Buffer & Creek & Stormwater
2019	Phase 2 – Fields & Dog Park
2020	Phase 3 – Paving & Electrical
2023	Phase 4 and Phase 5 – Planning and Design
Next Steps	Detailed Design and Construction Phase 4 and Phase 5A

Timeline for Phase 4 and Phase 5



Engagement Summary_Key Takeaways



Playground: Themes from all 3 school open houses

- 1/ Ziplines
- 2/ Slides
- 3/ Trampolines
- Swings

Waterplay / Spray Park: Themes from all 3 school open houses

- 1/ Slides
- 2/ Dump Bucket
- 3/ Ground Sprays

Youth Zone: Themes from all 3 school open houses

- 1/ Basketball
- 2/ Volleyball
- 3/ Skateboarding

Site Overview



Existing Parking area



Existing Soccer field



Longhill road



Existing pathway



Existing adjacent sloping agriculture fields



Existing entrance at Longhill Road



Valley Road



Existing attenuation pond in Brandt's Creek riparian buffer

Site Context

The existing park entrance from Valley Road is constrained by the crossing of Brandt's creek and the storm attenuation pond. The internal road constructed in Phase 3 provides parking and access to the East side of the park; however the addition of large capacity features such as the artificial turf field and the playground/splash park will add traffic volume and congestion. While future parking lots are proposed near the Activity Centre and field house, the current 'dead-end' layout of the roadway could be problematic. The inclusion of an internal loop or a separate vehicle entrance from Longhill Road could ease congestion and allow drivers to drop off closer to the centre of the park without the need to navigate a gauntlet of incoming traffic.

The North East corner of the park is the highest elevation and a pedestrian or vehicular entrance here would provide the most striking views looking South over the park and distant valley.



LEGEND

- EXISTING MAJOR ROAD
- EXISTING LOCAL ROAD
- EX.PATH AT SITE
- EXISTING INTERNAL ROAD/PARKING
- RESIDENTIAL AREA
- EXISTING SOCCER FIELD
- EXISTING ATTENUATION POND
- EXISTING OFF-LEASH DOG AREA
- BRAND'S CREEK
- ALR BUFFER AREA
- MAIN PARK ENTRANCE
- EXISTING PARKING
- EXISTING ROUNDABOUT
- SCOPE OF WORK

Vision for Glenmore Recreation Park

- *"Glenmore Recreation Park sits at a key intersection of rural land in the budding Glenmore neighborhood. As housing develops along Valley Road, this park will be a link between Kelowna's past and future. In the past water for Glenmore Valley was collected in reservoirs and delivered to the fields below through wooden and concrete flumes. Now obsolete, these channels are reimagined as an innovative water feature that connects playable fountains with stormwater collection."*
- *"Glenmore Recreation Park will offer premier facilities in the City of Kelowna where programmed athletics are integrated with community recreation. Open spaces are inclusive and recreation users who may have been previously kept out of public spaces may find comraderie and acceptance at a new Glenmore Community Hub."*

Early_Schematic design

What were the Big Ideas ?

1. Modify and improve stormwater infrastructure.
2. Add vehicle entrance at Longhill Road.
3. Locate Activity Centre on East side of park.

Main feedback with this approach

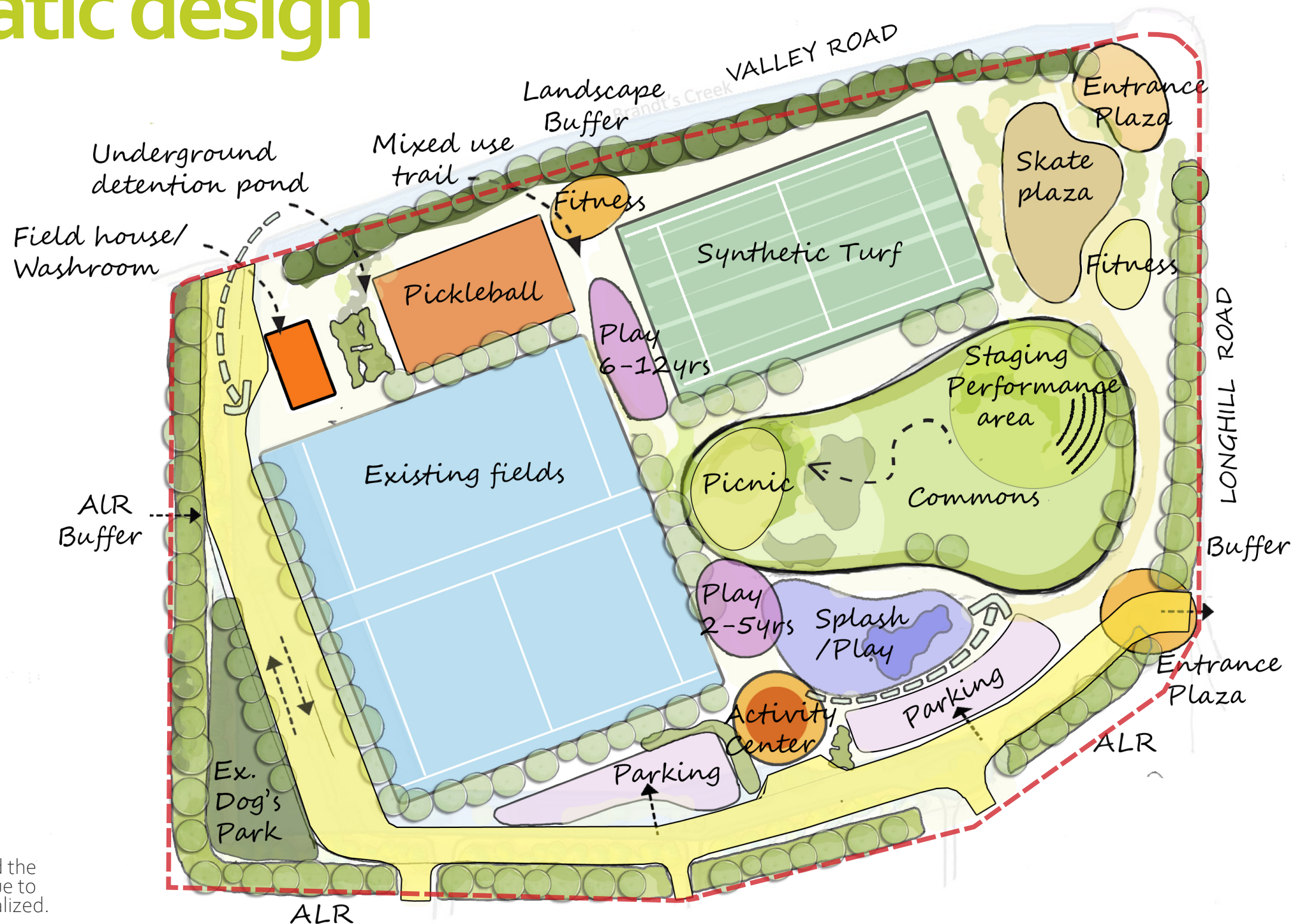
- Activity Centre and main play areas are located at the highest elevation to take advantage of prime views.
- Improved circulation with 2nd vehicle entrance.
- Parking remains at the park perimeter.
- Supports growth of Pickleball and sport courts.
- Improves function and aesthetics of stormwater

Key challenges

- Feasibility of new intersection at Longhill Road.
- Timing and relationship with Activity Centre.

Outcome:

The feedback from early schematic design has influenced the 2023 park Master Plan and the key challenges will continue to be navigated as the construction timeline of the park is realized.



Design Inspirations_Character



'Patchwork' patterns are reflected in the footprint of the play areas and entrance plazas on a gentle slope. These create unique views signifying hill side agriculture and valley corridors.

The artificial turf field and sports courts represent the grid patterns found in orchards and land delineation.

'Agricultural Landforms'



Inspiration from the winding nature of Glenmore Road.

The winding paths through the park are designed to mimic the experience of travelling through Glenmore Valley with mountains, creeks and varied landforms.

'Glenmore Valley & Roads'



Inspiration from the irrigation infrastructure that was used to convey water from the highlands into the agricultural lands of Glenmore Valley.

The design of the playground equipment and splash park structures mimic irrigation flumes and wooden industrial equipment used in the region.

'Water and Irrigation'

2023 Master Plan

Legend

- 1 ENTRY PLAZA WITH SEATING /SKATEABLE ELEMENTS
- 2 EXISTING SPORTS FIELD
- 3 PROPOSED ENHANCED STORMWATER POND
- 4 STAGING AREAS FOR SPORT'S GROUP / FITNESS AREA
- 5 PICKLEBALL COURTS X9
- 6 TENNIS COURTS X3 / STORAGE COMPOUND
- 7 FIELD HOUSE / TEMPORARY WASHROOM BUILDING
- 8 PLAYERS SHELTERS
- 9 ARTIFICIAL TURF FIELD
- 10 BOULDER SEATING WITH SHADE SAILS
- 11 THE BIG SWING
- 12 LAWN WITH ROW OF TREES
- 13 SPRAY PARK
- 14 THE COMMONS
- 15 WATER CHANNEL "FLUME"
- 16 PICNIC / FAMILY ZONE
- 17 DAYCARE PLAY AREAS
- 18 ACTIVITY CENTER (1050 SQ-M)
- 19 PLAYGROUND WITH SLOPED HILLS / HILLSLIDES
- 20 SKATEABLE PLAZA WITH BASKETBALL
- 21 SKATE RUN / PUMP TRACK
- 22 MULTI-USE PATH WITH SHADE TREES
- 23 SKATEABLE ENTRY PLAZA
- 24 CRICKET PRACTICE NET
- 25 SAND VOLLEYBALL X2
- 26 FULL BASKETBALL COURT X1 - 6 HOOPS



REQUIRED PARKING STALLS - 205 NO.
ACHIEVED PARKING STALLS - 212 NO.

- POSSIBLE LOCATIONS OF ART PIECE / WALL / FENCE ART
- POSSIBLE LOCATION FOR OUTDOOR PERFORMANCE AREA / TEMPORARY STAGE

Phase5_Construction plan

Phase 5

- Entry plazas.
- Fitness area.
- Tennis & pickleball courts.
- Temporary washroom.
- Artificial turf field.

Phase 6

- Volleyball.
- Splash park.
- Playground.
- Activity Center.
- Basketball, Cricket & Skate



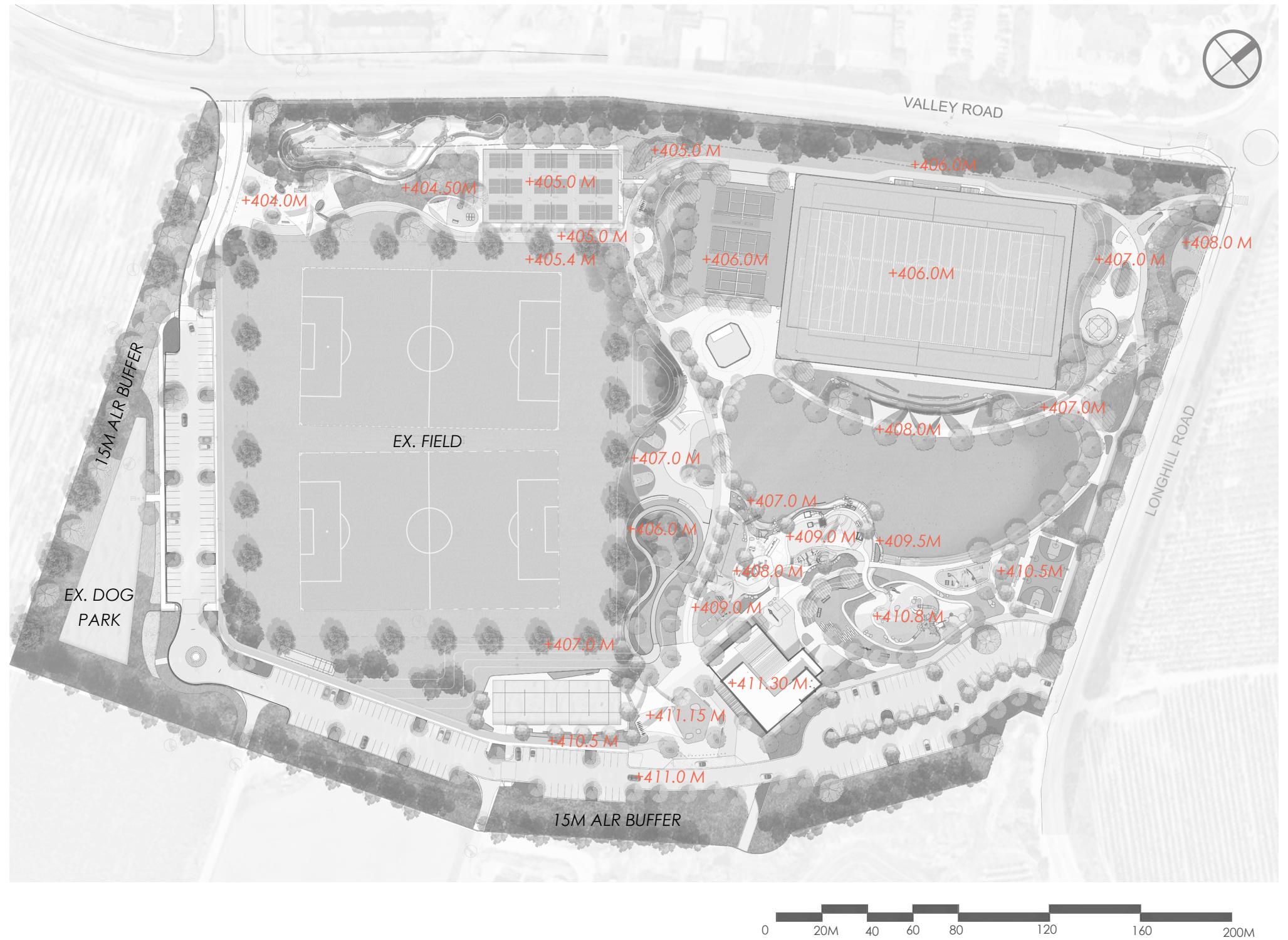
Circulation Plan

LEGEND

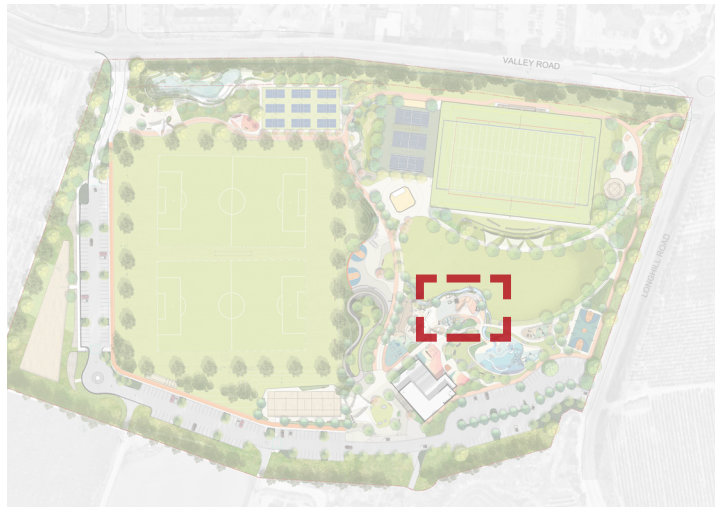
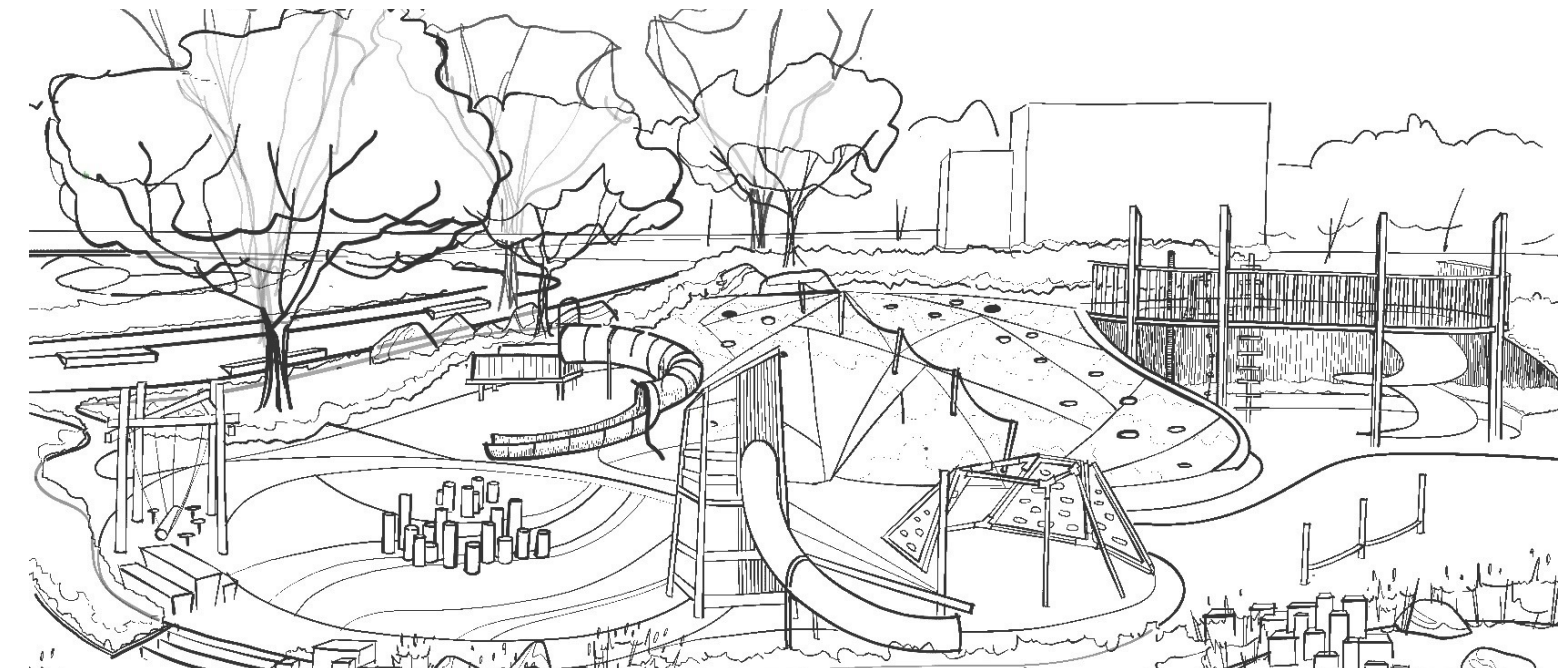
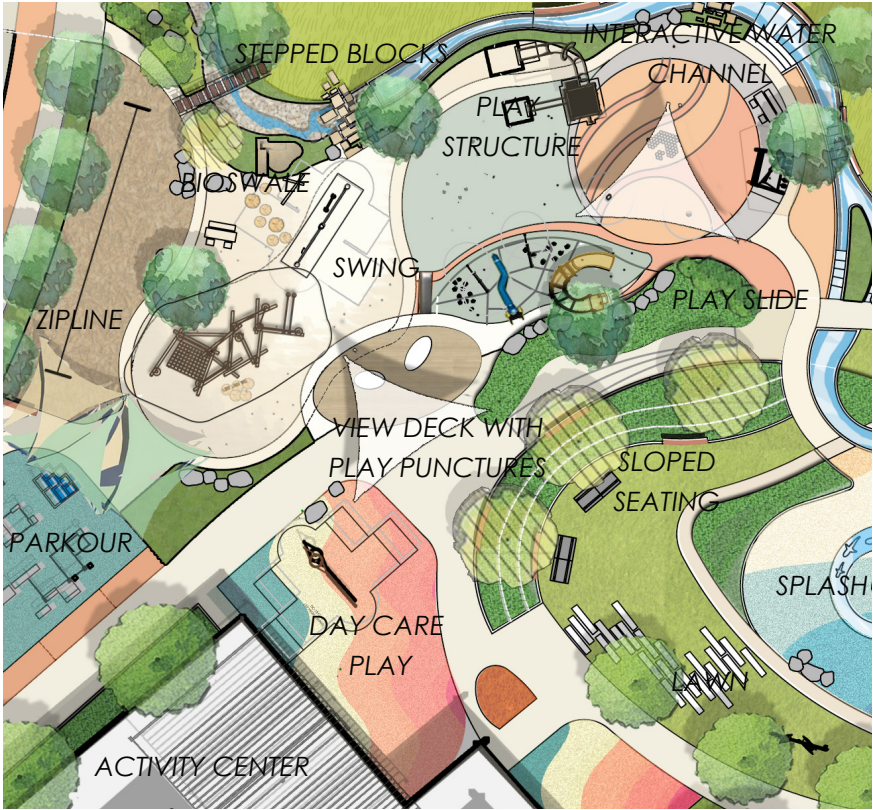
- VEHICULAR
- MAINTENANCE VEHICULAR
- PEDESTRIAN
- ACTIVE / MULTI-USE
- EXISTING DRIVEWAYS
- ENTRY / PLAZA



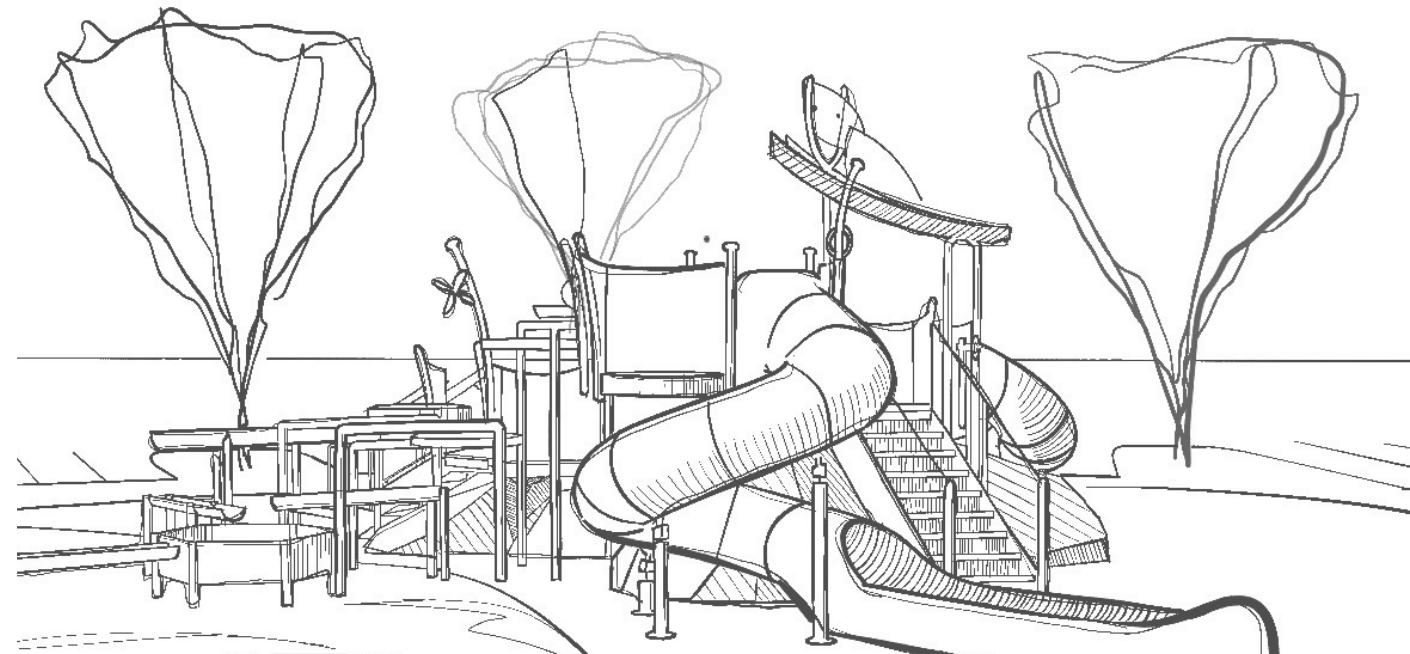
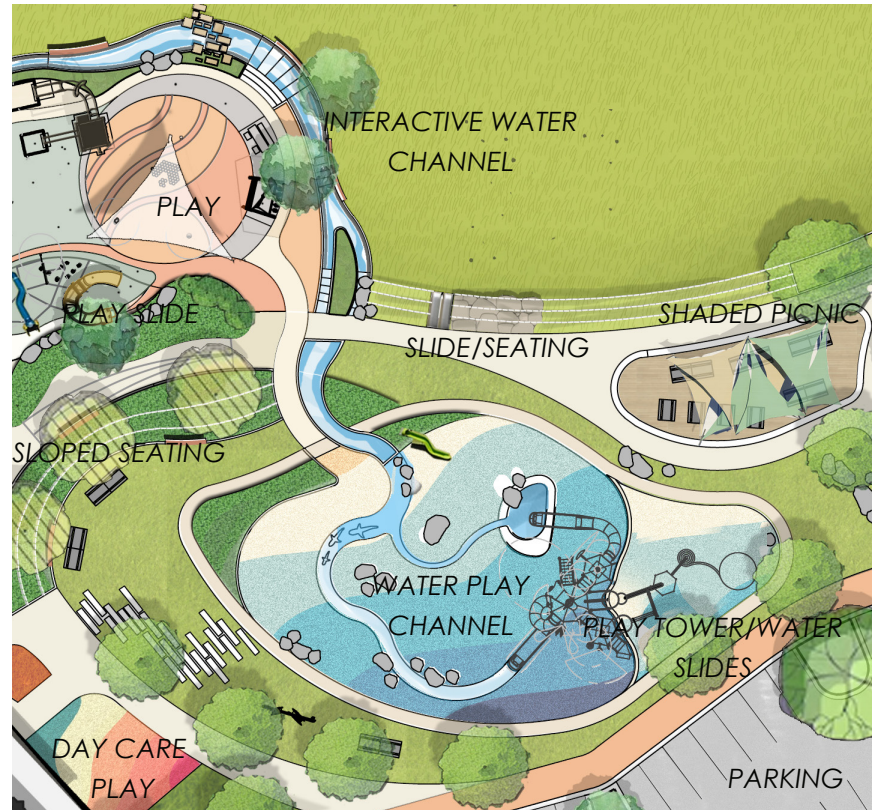
Grading



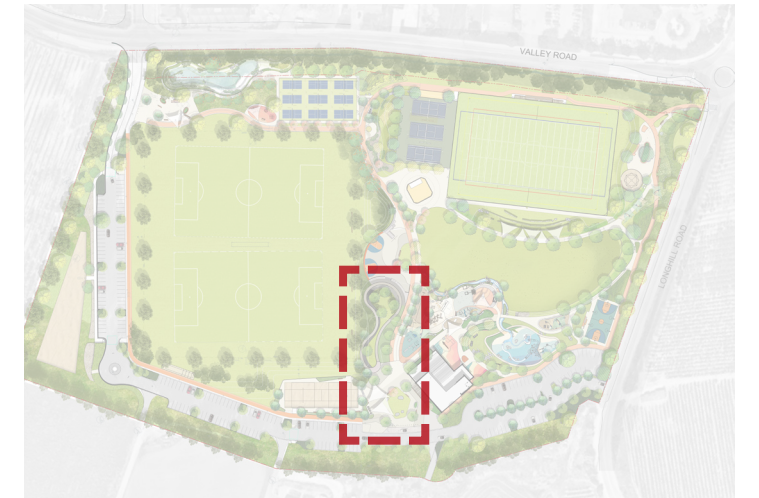
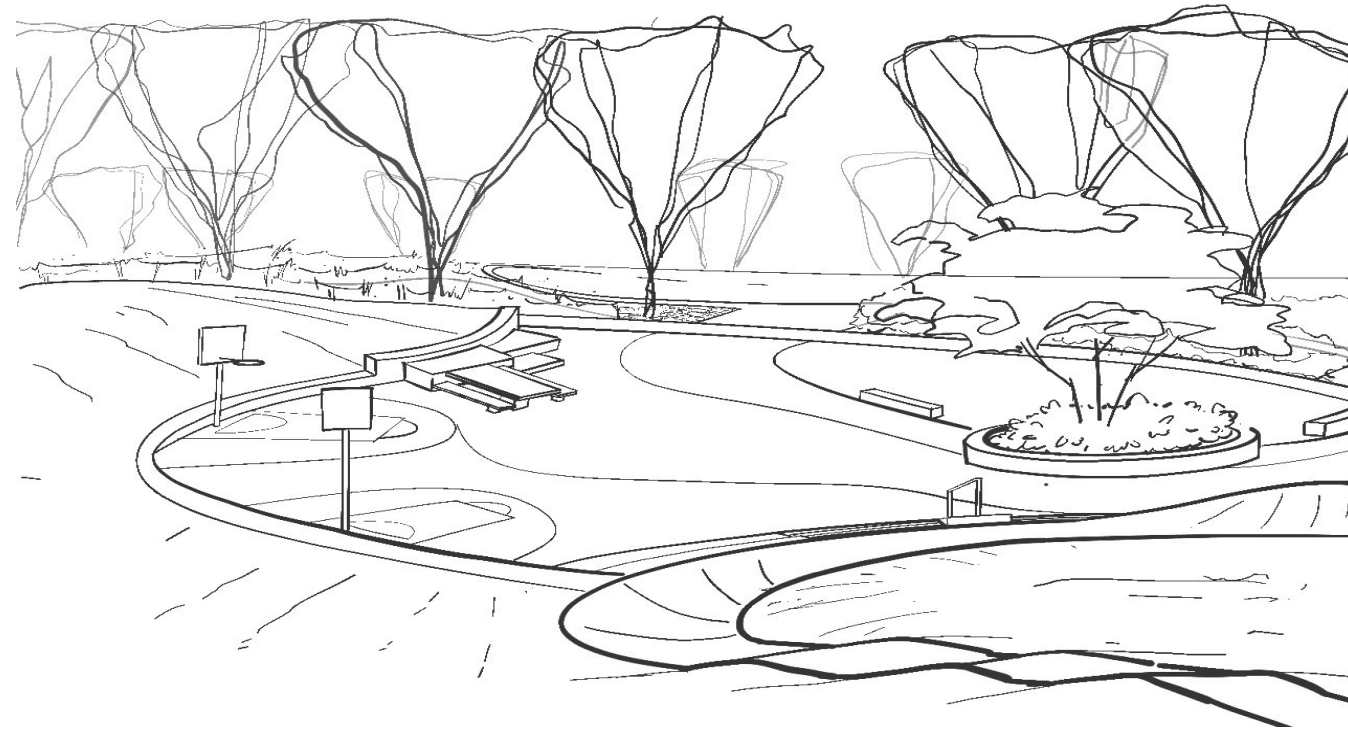
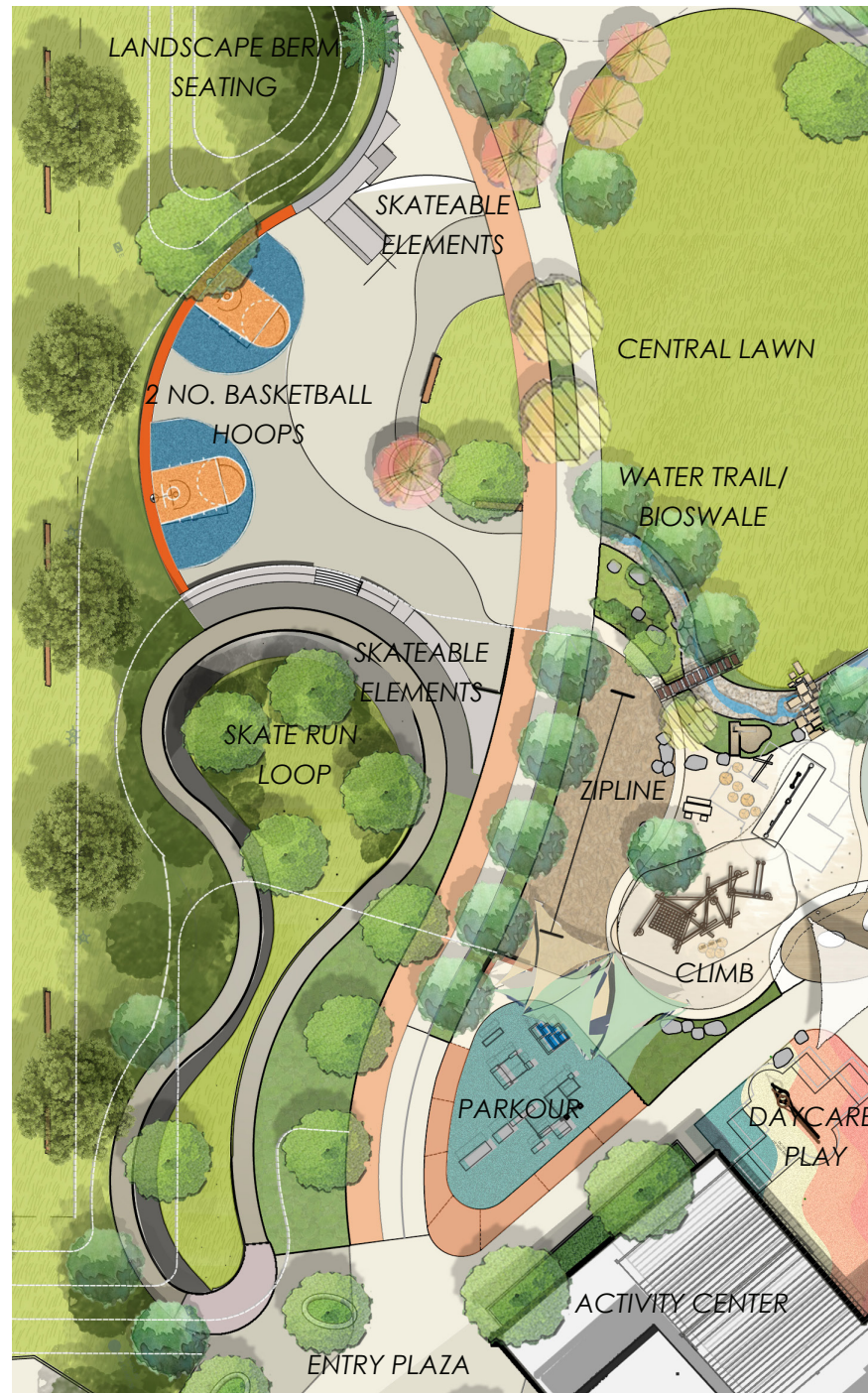
Program: Playground



Program: **Splash / Water channel**



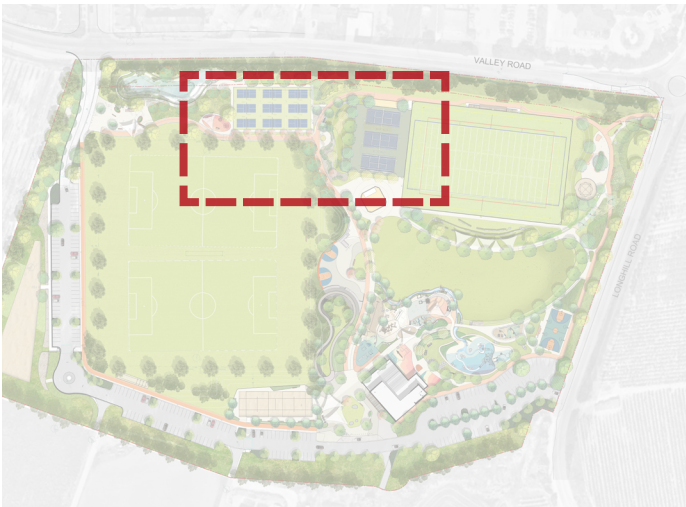
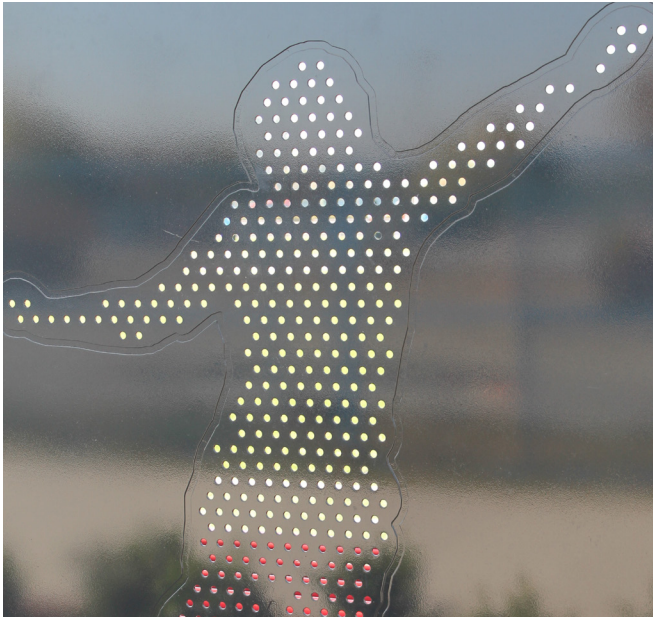
Program: Skaterun / Basketball



Program: ATF / Big Swing



Program: Tennis / Pickleball / Fitness



Program: Plaza / Fitness / Mixed use path



Gathering Lawn - Picnic shaded spots



Multi-use path



Skateable elements at entry plaza



Playful elements at Multipath

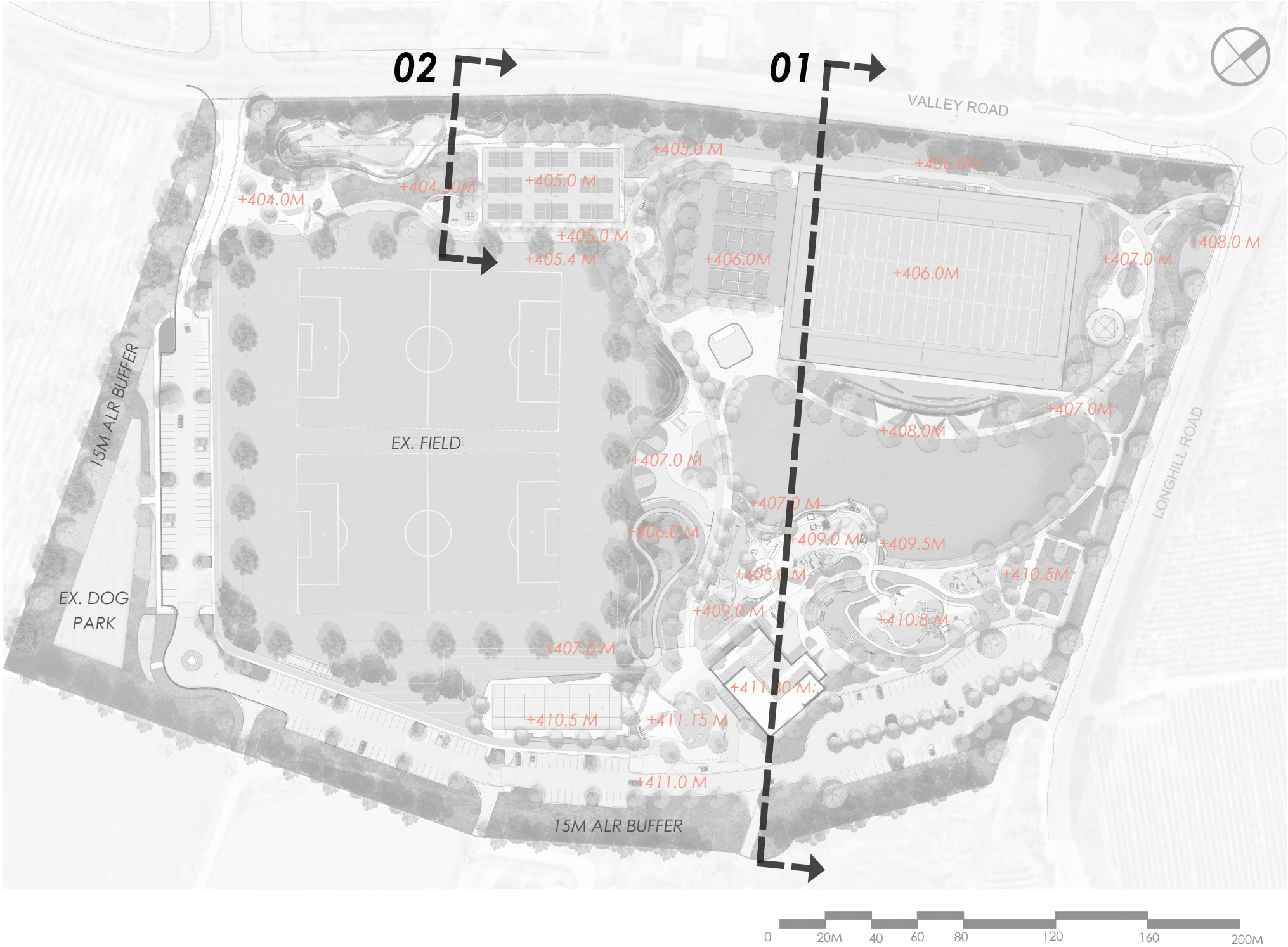


Fitness nodes



Shaded pedestrian and multi-use path

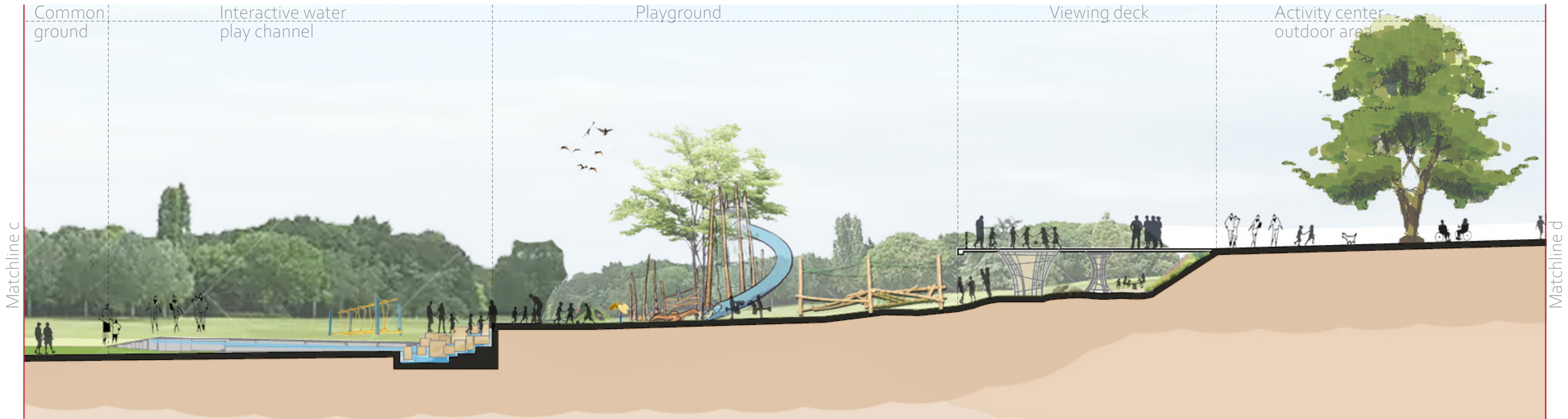
Sections: Key plan



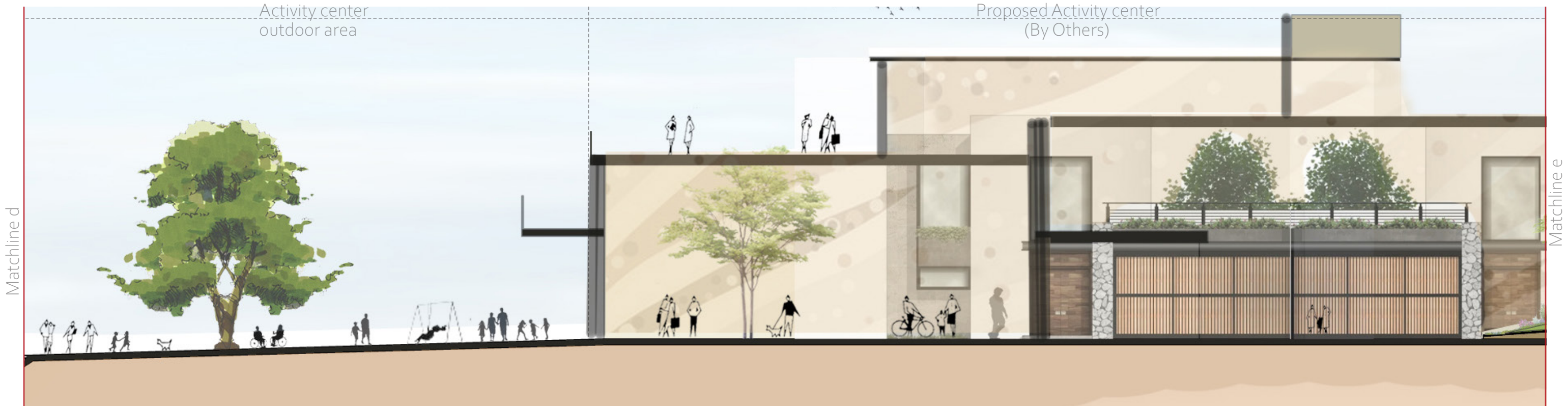
Section 01: west to east



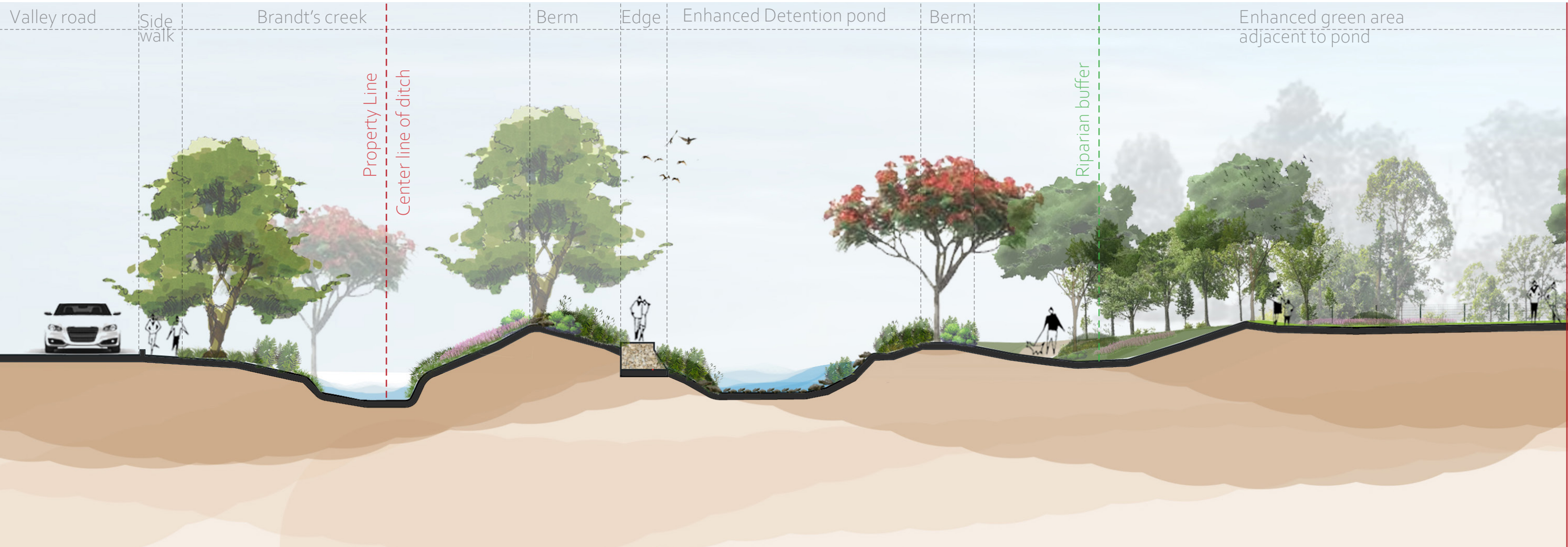
Section 01: west to east



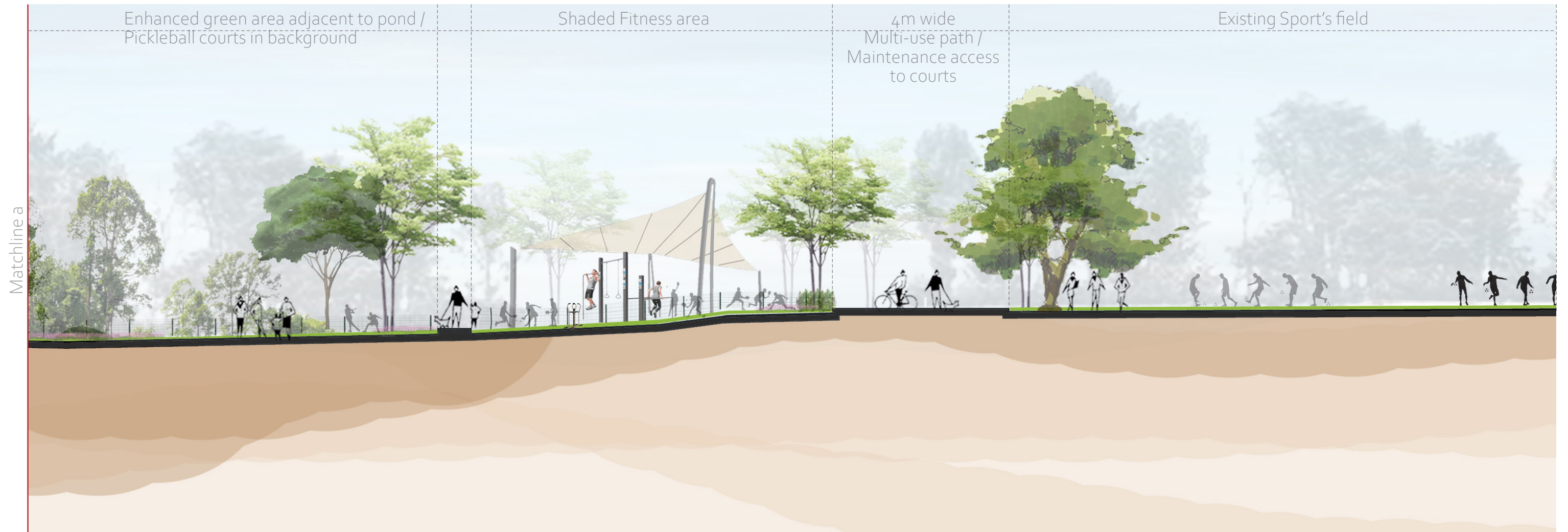
Section 01: west to east



Section 02: through storm water pond



Section 02: through storm water pond



Glenmore Recreation Park _ 2023 Master Plan

