

# Jean Road Reservoir

## Site selection



### **Kelowna Integrated Water Supply Plan - Phase 1**

This project includes separated agricultural and domestic systems in Southeast Kelowna. It will provide South East Kelowna Irrigation District (SEKID) customers with treated water from Okanagan Lake for domestic use and resolve irrigation supply problems for South Okanagan Mission Irrigation District (SOMID) customers.

This project is being funded by a \$43.9 million grant from the provincial and federal governments.

### **Design & Timeline**

The construction period is expected to start in 2018 and is anticipated to take two years to complete.

Preliminary plans for the Jean Road Reservoir are on the back of this page. Once the environmental assessment is done and detailed plans are prepared, they will be shared at upcoming information sessions.

**Infrastructure**  
1435 Water Street  
Kelowna, BC V1Y 1J4  
kelowna.ca

As part of Phase 1 of the Kelowna Integrated Water Supply Plan, a new domestic water system is being built to provide current South East Kelowna Irrigation District customers with higher quality and reliable drinking water. The system's preliminary design requires a reservoir and pump station at a very specific elevation in order to meet water pressure, flow and emergency storage requirements.

### **Why this location?**

The elevation of the property at 4075 Jean Road makes it ideally suited for this facility and was acquired by the City of Kelowna specifically as a location for a future water storage facility. This property is not designated as a park and as it is already owned by the City of Kelowna, it is available with no extra expense to the project or to system users.

### **Will recreational use still be allowed?**

Recreational uses such as hiking or horseback riding will continue to be permitted on the majority of this forested site. The total land area of the City's parcel is 46.4 acres and only about 1.4 acres will be used for the water facility, leaving approximately 45 acres for recreational use.

### **What are the environmental impacts?**

The site where this facility will be built was chosen to avoid disturbing environmentally sensitive areas as much as possible. The access road and water main and power connections to the site from Jean Road will be designed to minimize impacts.

A second water main also needs to be constructed between the reservoir and Gallagher's Fairway South. A route will be selected that minimizes the need to remove trees and the area will be restored with natural surface cover upon completion.

The reservoir will be partially buried in a forested area in order to minimize its visual impact. The site will be fenced and additional trees and native shrubs will be planted to further screen the site.

An environmental impact assessment for this project is underway and a development permit is required before construction can begin. Best practices for work in sensitive areas will be strictly followed for both construction and operation of the facility.

The facility will be operated by highly trained and experienced City of Kelowna staff. Re-chlorination for water quality may be conducted here but presents no risk to residents or the environment. Periodic reservoir cleaning and flushing will also be conducted in strict compliance with environmental regulations.

### **How will neighbours be impacted?**

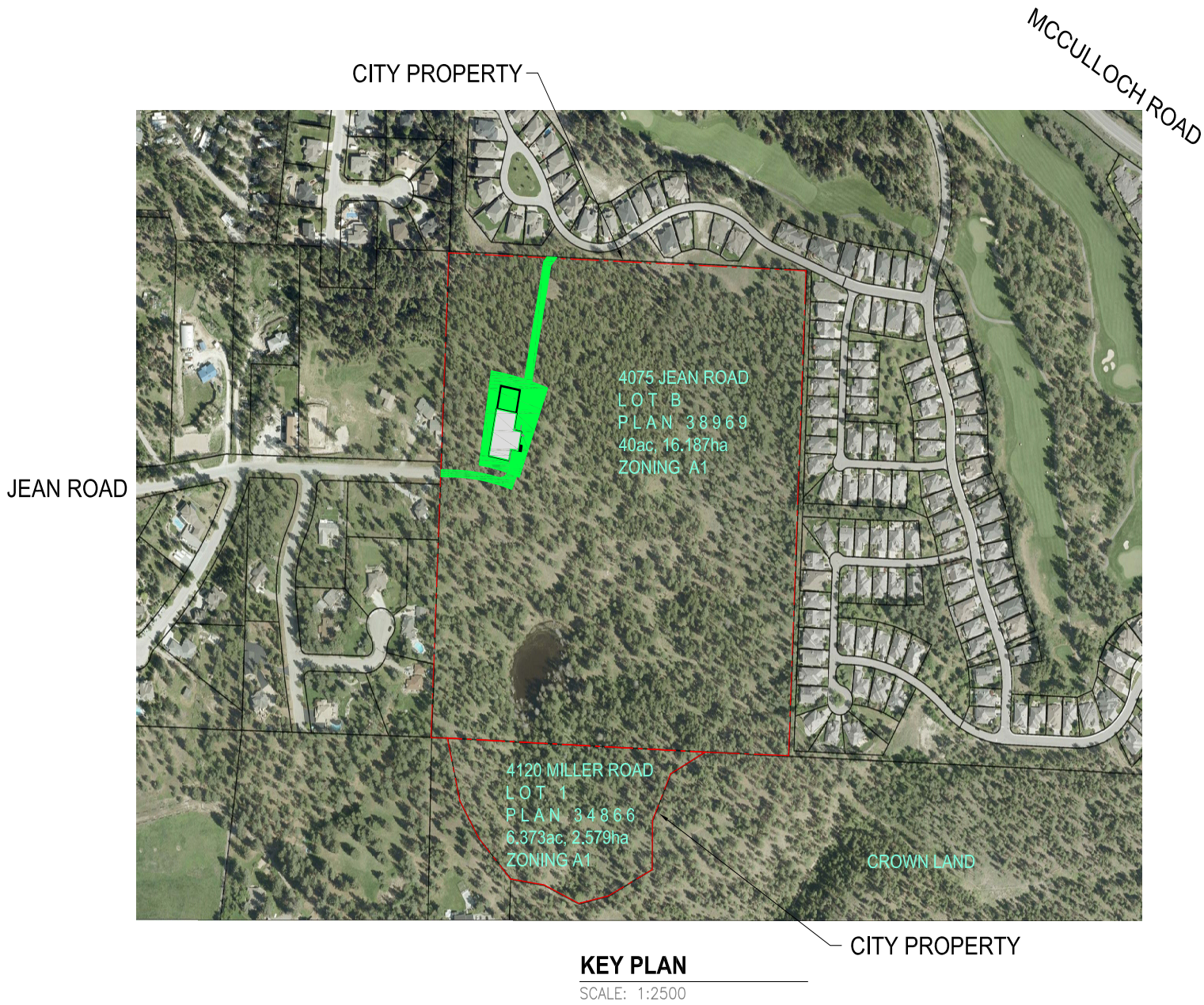
The current zoning requires a minimum distance of three metres between a structure and the property line. This reservoir will be located 40 metres from the property line to provide an additional 37 metres of buffer between the facility and neighbouring properties.

The pump station attached to the reservoir will not create noise issues. The only noise that may be heard near the station from time to time is from the backup generator during a power outage or testing. Noise from the pumps themselves will be dampened within the concrete building and even the generator has to meet noise dampening requirements.

Every effort will be made to minimize disturbances during construction, but there is unfortunately no simple way to complete the work without some disruption. This small inconvenience is required to provide residents of Southeast Kelowna with clean, reliable drinking water.



Reservoir Site Plan



Cross section, showing grade changes from property line to reservoir site

