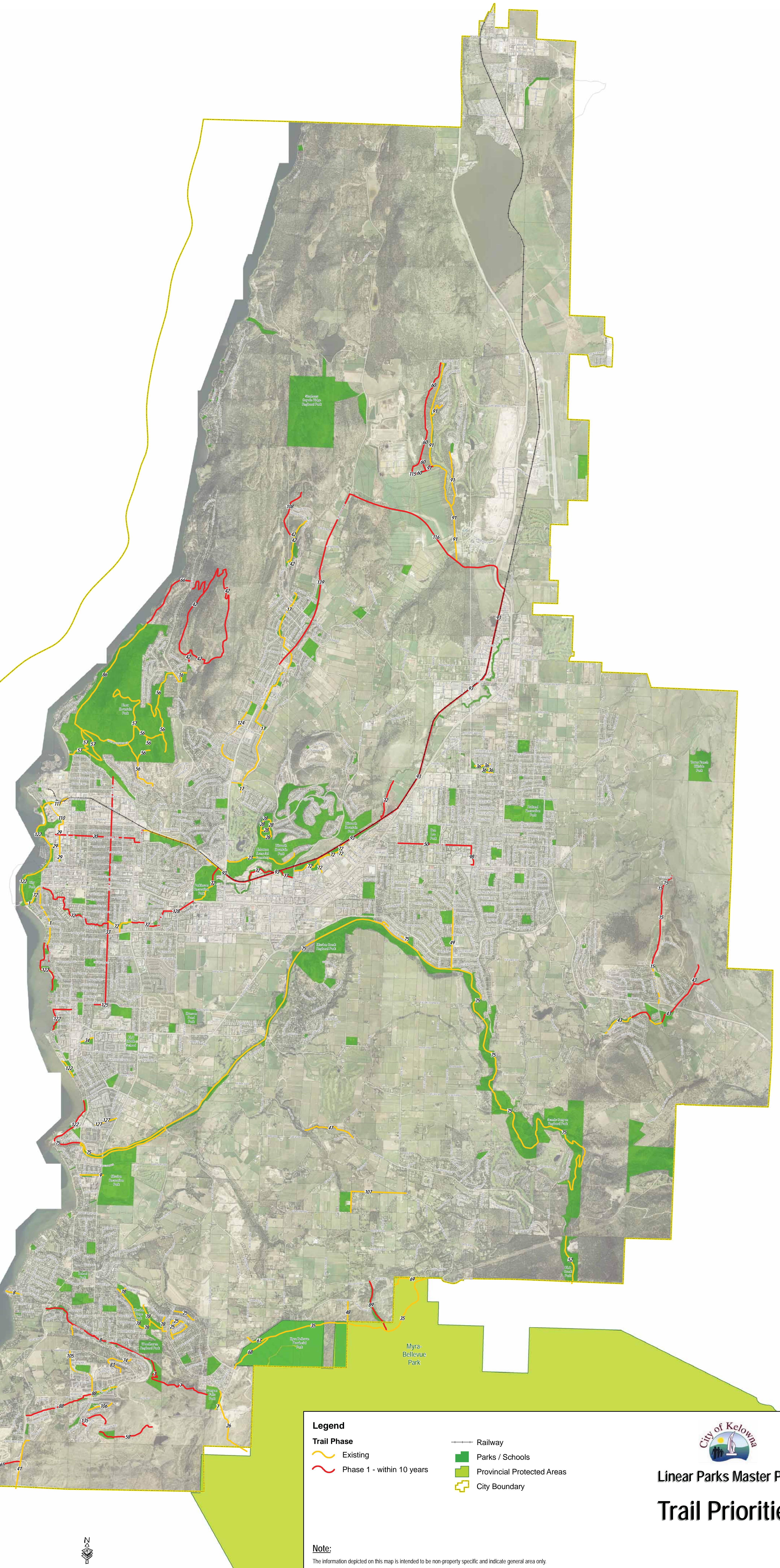


Name	Total Length (m)
1 - Abbott Street Recreation Corridor	9,614.8
2 - BC Sea Kiosk Trail (University South)	2,622.9
3 - BMD Flume Trail	10,663.0
4 - Barnaby Road Recreation Corridor	630.9
5 - Bell Mountain Trail	1,103.6
7 - Bellevue Creek Top of Bank Walk	3,995.6
8 - Bellevue Creek Trails	7,827.0
9 - Belmont Trail	428.7
11 - Bertram Creek North Top of Bank Walk (Cedar Mountain Regional Park)	1,466.4
12 - Bertram Creek South Top of Bank Walk	1,528.7
14 - Black Mountain Recreation Trail	1,181.3
15 - Black Mountain Recreation Corridor	2,767.1
16 - Blair Road Trail	476.6
17 - Brandt's Creek Linear Park	4,337.1
18 - Babna Slough Trail	2,674.3
19 - Carney Pond Trail	391.2
20 - Caveston Avenue Recreation Corridor	1,830.2
22 - Cedar Mountain Linear Park	2,237.1
23 - Cemetery Walk	1,340.2
24 - Corrobb Slope Trail	1,078.6
25 - Crawford Bridge Paths	1,585.0
26 - Crawford Trail	1,300.2
28 - Dieworth Mountain Park Trails	1,491.2
29 - Downtown Art Walk	888.6
31 - Ellison Lake Trail	5,146.1
32 - Elsona Creek West Top of Bank Walk	5,573.3
33 - Ethel Street Greenway	4,072.2
34 - Ethel Street to Faskieux Wetland	2,344.4
35 - Fairlane Trail (Myra-Bellevue Provincial Park)	3,483.4
36 - Francis Brook Linear Park	2,206.4
37 - Fraser Lake Trail	1,348.9
38 - GBD Flume Trail	6,311.8
39 - Gallagher Road Recreation Corridor	2,366.9
40 - Gallagher's Canyon Trails	1,542.2
41 - Gillard Trail	923.1
42 - Glenmore Highlands Trails	18,644.4
43 - Gopher Creek Linear Park	7,863.3
44 - Gordon Drive/Barrera Road Trail Connection	4,403.1
45 - Guleshan / Burnes Road Corridor	4,291.3
47 - Guiley Road Trail	2,918.7
48 - Harvard Road Linear Park	396.1
49 - Hedgeford Road Recreation Corridor	2,247.0
50 - Houghton / Mugford Road Recreation Corridor	3,425.0
51 - Jack Smith Lake Trails	1,651.2
52 - K/O Creek Trail	2,236.6
53 - Kettle Valley Trails	4,014.3
54 - Kitchner Mountain Trails	4,666.6
55 - Kitchner Mountain to Gallagher's Canyon	1,597.7
56 - Knox Mountain East Trails	6,425.9
57 - Knox Mountain West Trails	4,447.9
58 - Kupper's Peak Trail	1,061.9
59 - Lakeshore Road Trail Connection	7,033.3
60 - Landfill Trails	4,289.9
61 - Layer Cake Trail	910.0
62 - Lebanon Creek East Top of Bank Walk	3,220.8
63 - Lebanon Creek West Top of Bank Walk	1,922.0
65 - Leon Creek Linear Park	1,184.1
66 - Lockwood Trail	2,886.4
67 - Lost Lake Trail (Myra-Bellevue Provincial Park)	479.3
68 - Lower Bench Trail (Myra-Bellevue Provincial Park)	830.0
69 - Lumiere Trail	910.6
70 - McKinley Landing to Carr's Landing Trail	5,522.9
71 - McKinley Mountain Trail	1,167.1
72 - Mill Creek Linear Park	14,068.4
73 - Mine Hill Trails	5,145.0
74 - Bellevue Bluffs Trail	1,735.6
75 - Mission Creek Greenway	29,311.1
76 - Mission Creek Flume Trail (Sonic Canyon Regional Park)	1,121.1
77 - Mission Creek to Mill Creek Connection	1,788.7
78 - Mission Ridge Trails	2,180.0
79 - Mount Royal Trail	1,777.8
80 - Mt. Billy Trail	2,326.9
82 - North Glenmore Pond Trail	1,548.8
83 - Old Parcel Road Trail	483.1
84 - McKinley to Ellison Bench Trail	7,029.8
85 - Parkinson Recreation Park Trail	418.2
86 - Park's Tomb Trail	2,374.8
87 - Ponds Trail (Neighbourhood 3)	1,274.7
88 - Powerline Linear Park	20,915.2
89 - Priest Creek Linear Park	6,298.6
90 - Quail Ridge East Loop	4,750.0
91 - Quail Ridge Linear Park	7,289.5
93 - Rails with Trails	20,226.9
94 - Raymer Road Recreation Corridor	1,364.4
95 - Rumber Creek Linear Park	3,189.2
96 - Rumber Creek Trail	2,331.4
97 - Robert Lake Trail	2,420.0
98 - Rutland Blvd Trail	3,598.3
100 - Rutland Town Centre Walk	848.1
101 - SBD Irrigation Flume Trail	4,744.9
102 - Scenic Canyon Trail	5,894.8
103 - South Perimeter Way Connection	698.5
105 - Southridge Drive Recreation Corridor	1,042.4
106 - Southcrest Trail	444.5
107 - Spars Road Recreation Corridor	2,906.9
108 - Stephen's Coyote Ridge Trail (Stephen's Coyote Regional Park)	3,729.0
110 - Sunrise Drive Trail	469.5
111 - Sunrise Drive to Recreation Avenue	833.2
112 - Swanson Pond Trail	1,722.4
114 - Tower Ranch Trails	1,632.8
115 - Tonn Mountain Trail	3,945.5
116 - John Heinkle Way	3,507.4
117 - Union / Curtis Recreation Corridor	3,003.5
118 - University South	1,348.2
121 - Vernon Creek Linear Park	2,035.2
122 - Waterfront Walkway Mission Creek to Knox Mountain Park	9,488.6
124 - Watson Road Recreation Corridor	2,750.5
125 - West Avenue Park to Gordon Drive	1,045.5
126 - Wild Horse Canyon Trail (Kanagan Mountain Provincial Park)	627.2
127 - Wilson Creek Linear Park	768.1
128 - Backland to Dehart Trail / Sutherland to PRC	2,252.7
129 - Lawrence Ave Trail Connection	2,723.6
130 - Clifton Road to Arthur Court	1,380.7
131 - Buck Mountain Trail	1,810.0
132 - Field Road Trail	556.2
133 - Kathleen Lake Trail	1,016.8
134 - Kabanova Crags Trail	1,251.4
135 - South Ridge Trails	1,128.8
136 - Waterfront Walkway Clifton Road to Dewdney Road	2,587.7
137 - Waterfront Walkway Arthur Road to Finch Road	3,209.1
138 - McKinley Road Beach Access Trail	459.9
139 - Glenmore Drive Recreation Corridor	3,313.0
140 - Arthur Court Connection	961.4
141 - Glenmore Drive South	3,889.4
142 - Burnch to K/O Road Corridor	2,209.1



**Legend**

**Trail Phase**

- Existing
- Phase 1 - within 10 years

**Other Features:**

- Railway
- Parks / Schools
- Provincial Protected Areas
- City Boundary

**Linear Parks Master Plan**

**Trail Priorities**

**Note:**

The information depicted on this map is intended to be non-property specific and indicate general area only. Features and boundaries are approximate and may not be consistent with actual property lines. Additional Trails / Linear Parks not shown on this plan may be required by the City of Kelowna at the time of subdivision.

**CATHERINE BERRIS ASSOCIATES INC.**  
Community • Environmental Planning • Landscape Architecture

