

Bulletin: Water Metering Requirements

Water Meter Standard Details



Bulletin # 000-000

Updated:

Created: April 17, 2024

This bulletin is for informational purposes only. Please be sure to consult BC Plumbing Code, National Plumbing Code, and any relevant City of Kelowna Bylaws.

Purpose

To inform and educate all users (installers, plumbing contractors, water purveyors, designers, inspectors, and city staff, etc.) with respect to the installation of water meters in the City of Kelowna in accordance with the Plumbing Regulation Bylaw - Water Metering Requirements.

Requirements

Single and Two-Family Residential Dwellings

See **City** of Kelowna Meter Standard Drawing;
NO.4 "Single family Residential Meter Installation" Appendix "A"

Multi-Family Residential, Commercial, Industrial and Institutional Developments located within City of Kelowna Water Distribution Boundaries and/or Connected to City of Kelowna Sanitary Sewer Collection Systems

All meters, larger than 38 mm diameter, must be installed with bypass piping as shown on **City** of Kelowna Meter Standard Drawings;

NO.01 "Multi-family / Commercial Without Fire Protection" Appendix "B",
NO.02 "Multi-family / Commercial with Fire Protection (option 1)" Appendix "C", or
NO.03 "Multi-Family / Commercial with Fire Protection (option 2)" Appendix "D"

Note:

The City may provide a meter spool (spacer) piece at no cost as part of the permit fee.
Contact Water Meter Services at 250-862-0409 to arrange for pick-up time and location.

Information

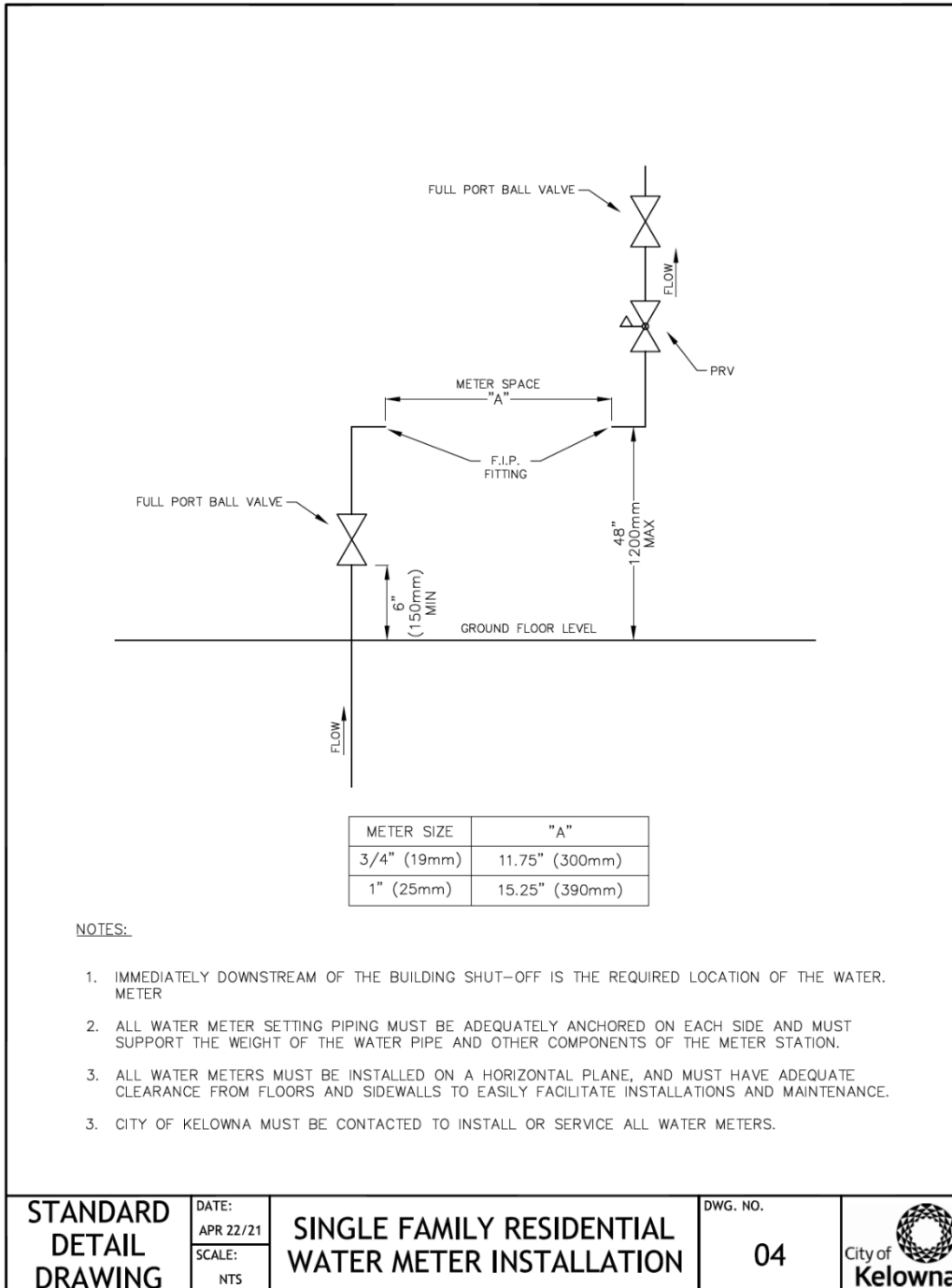
Should you require further clarification on the water metering requirements please contact Brad Miazga, Water Meter Service Coordinator bmiazga@kelowna.ca 250-469-8527.

Water Meter Services

951 Raymer Ave
Kelowna, BC V1Y 4Z7
TEL 250-862-0409
watermeters@kelowna.ca

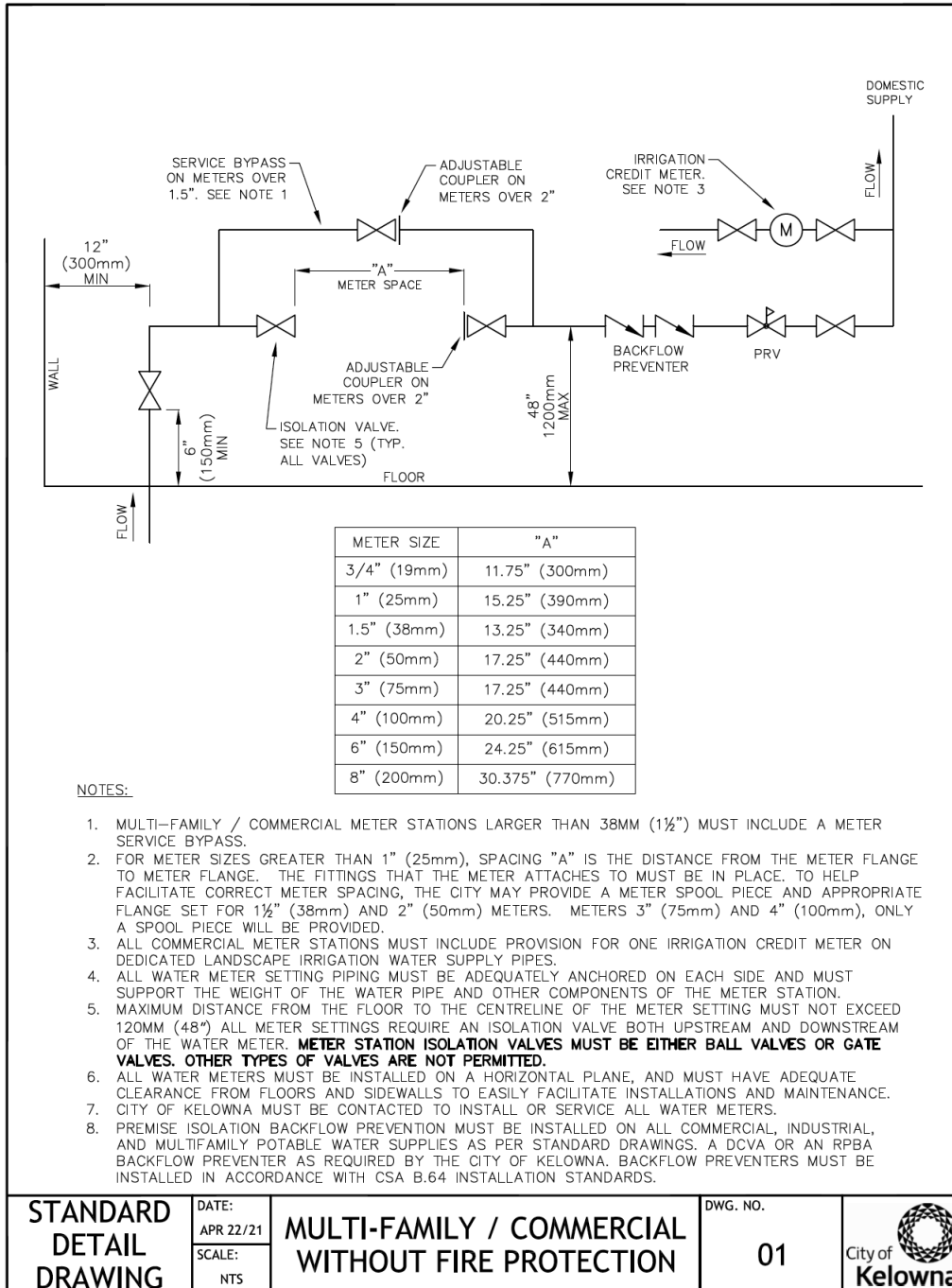
APPENDIX "A"

DWG. NO. 04 SINGLE FAMILY RESIDENTIAL WATER METER INSTALLATION



APPENDIX "B"

DWG. NO. 01 MULTI-FAMILY / COMMERCIAL WITHOUT FIRE PROTECTION



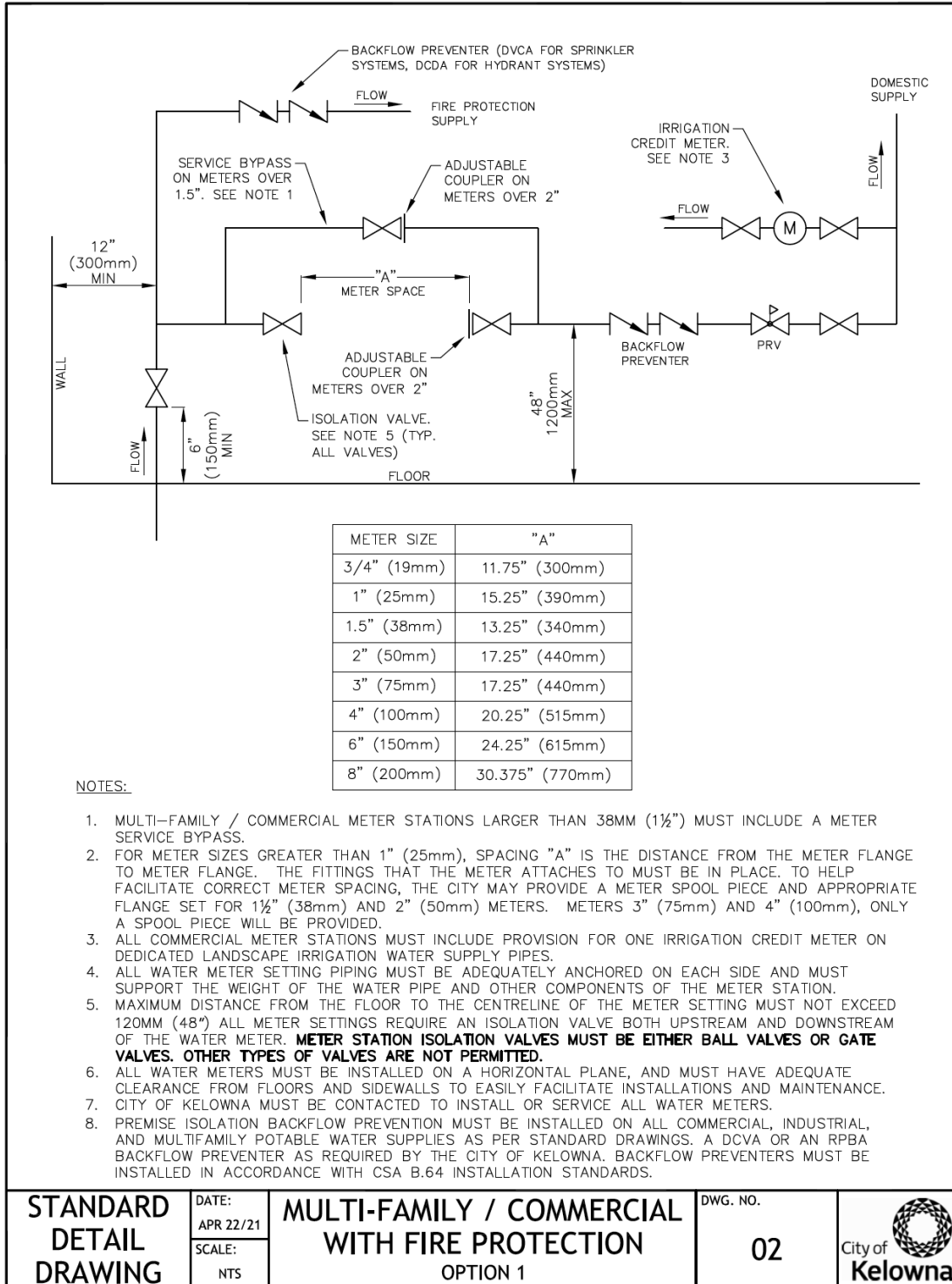
Water Quality & Customer Care

Water Meter Standard Details



APPENDIX "C"

DWG. NO. 02 MULTI-FAMILY / COMMERCIAL WITH FIRE PROTECTION - OPTION 1



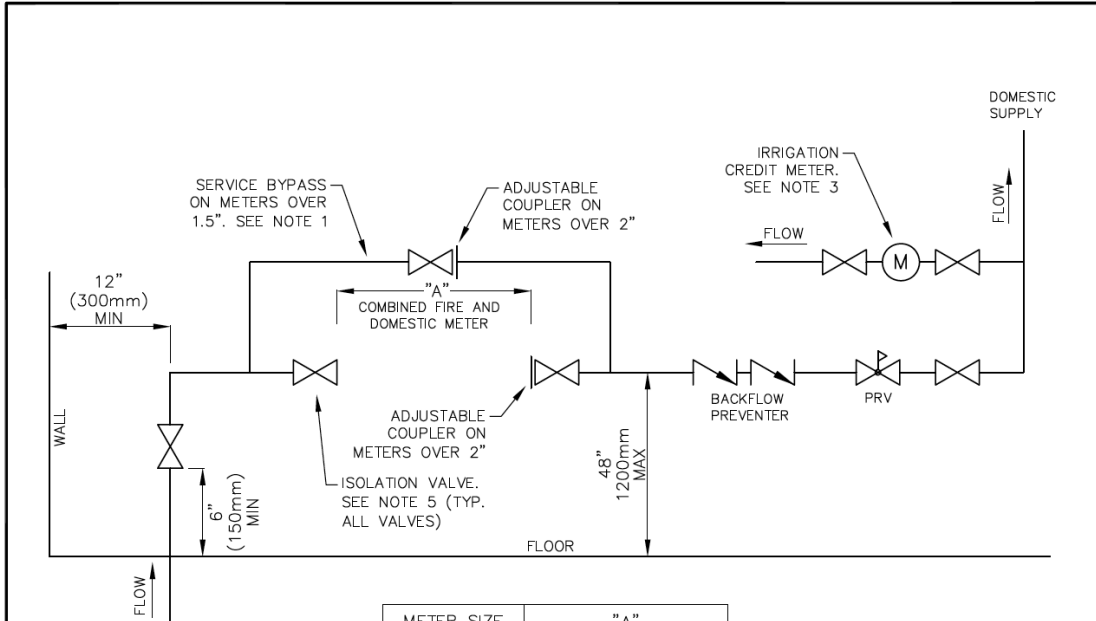
Water Quality & Customer Care

Water Meter Standard Details



APPENDIX "D"

DWG. NO. 03 MUTLI-FAMILY / COMMERCIAL WITH FIRE PROTECTION - OPTION 2



METER SIZE	"A"
3/4" (19mm)	11.75" (300mm)
1" (25mm)	15.25" (390mm)
1.5" (38mm)	13.25" (340mm)
2" (50mm)	17.25" (440mm)
3" (75mm)	17.25" (440mm)
4" (100mm)	33.25" (845mm)
6" (150mm)	45.25" (1150mm)
8" (200mm)	53.25" (1350mm)

NOTES:

- MULTI-FAMILY / COMMERCIAL METER STATIONS LARGER THAN 38MM (1½") MUST INCLUDE A METER SERVICE BYPASS.
- FOR METER SIZES GREATER THAN 1" (25mm), SPACING "A" IS THE DISTANCE FROM THE METER FLANGE TO METER FLANGE. THE FITTINGS THAT THE METER ATTACHES TO MUST BE IN PLACE. TO HELP FACILITATE CORRECT METER SPACING, THE CITY MAY PROVIDE A METER SPOOL PIECE AND APPROPRIATE FLANGE SET FOR 1½" (38mm) AND 2" (50mm) METERS. METERS 3" (75mm) AND 4" (100mm), ONLY A SPOOL PIECE WILL BE PROVIDED.
- ALL COMMERCIAL METER STATIONS MUST INCLUDE PROVISION FOR ONE IRRIGATION CREDIT METER ON DEDICATED LANDSCAPE IRRIGATION WATER SUPPLY PIPES.
- ALL WATER METER SETTING PIPING MUST BE ADEQUATELY ANCHORED ON EACH SIDE AND MUST SUPPORT THE WEIGHT OF THE WATER PIPE AND OTHER COMPONENTS OF THE METER STATION.
- MAXIMUM DISTANCE FROM THE FLOOR TO THE CENTRELINE OF THE METER SETTING MUST NOT EXCEED 120MM (48") ALL METER SETTINGS REQUIRE AN ISOLATION VALVE BOTH UPSTREAM AND DOWNSTREAM OF THE WATER METER. **METER STATION ISOLATION VALVES MUST BE EITHER BALL VALVES OR GATE VALVES. OTHER TYPES OF VALVES ARE NOT PERMITTED.**
- ALL WATER METERS MUST BE INSTALLED ON A HORIZONTAL PLANE, AND MUST HAVE ADEQUATE CLEARANCE FROM FLOORS AND SIDEWALLS TO EASILY FACILITATE INSTALLATIONS AND MAINTENANCE.
- CITY OF KELOWNA MUST BE CONTACTED TO INSTALL OR SERVICE ALL WATER METERS.
- PREMISE ISOLATION BACKFLOW PREVENTION MUST BE INSTALLED ON ALL COMMERCIAL, INDUSTRIAL, AND MULTIFAMILY POTABLE WATER SUPPLIES AS PER STANDARD DRAWINGS. A DCVA OR AN RPBA BACKFLOW PREVENTER AS REQUIRED BY THE CITY OF KELOWNA. BACKFLOW PREVENTERS MUST BE INSTALLED IN ACCORDANCE WITH CSA B.64 INSTALLATION STANDARDS.

STANDARD DETAIL DRAWING	DATE: APR 22/21	MULTI-FAMILY / COMMERCIAL WITH FIRE PROTECTION OPTION 2	DWG. NO.	
	SCALE: NTS		03	