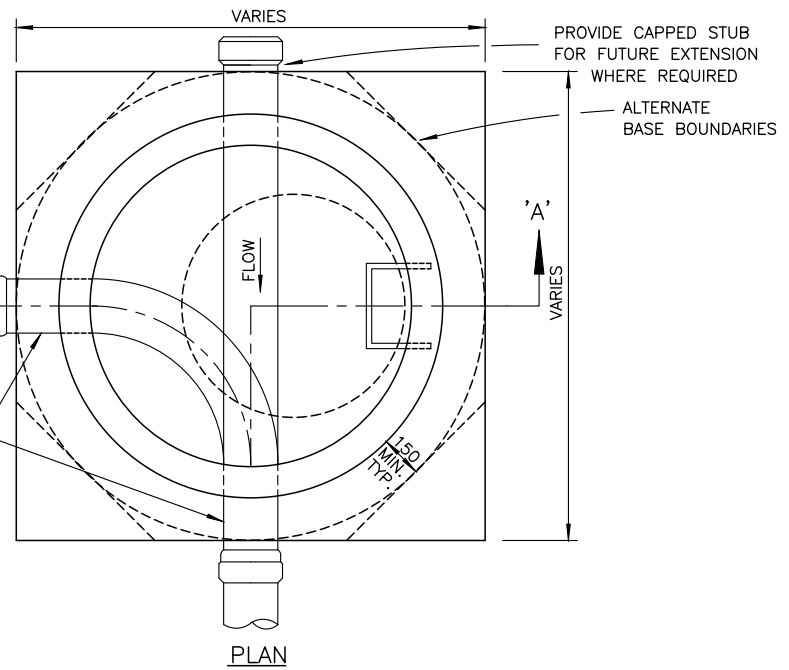


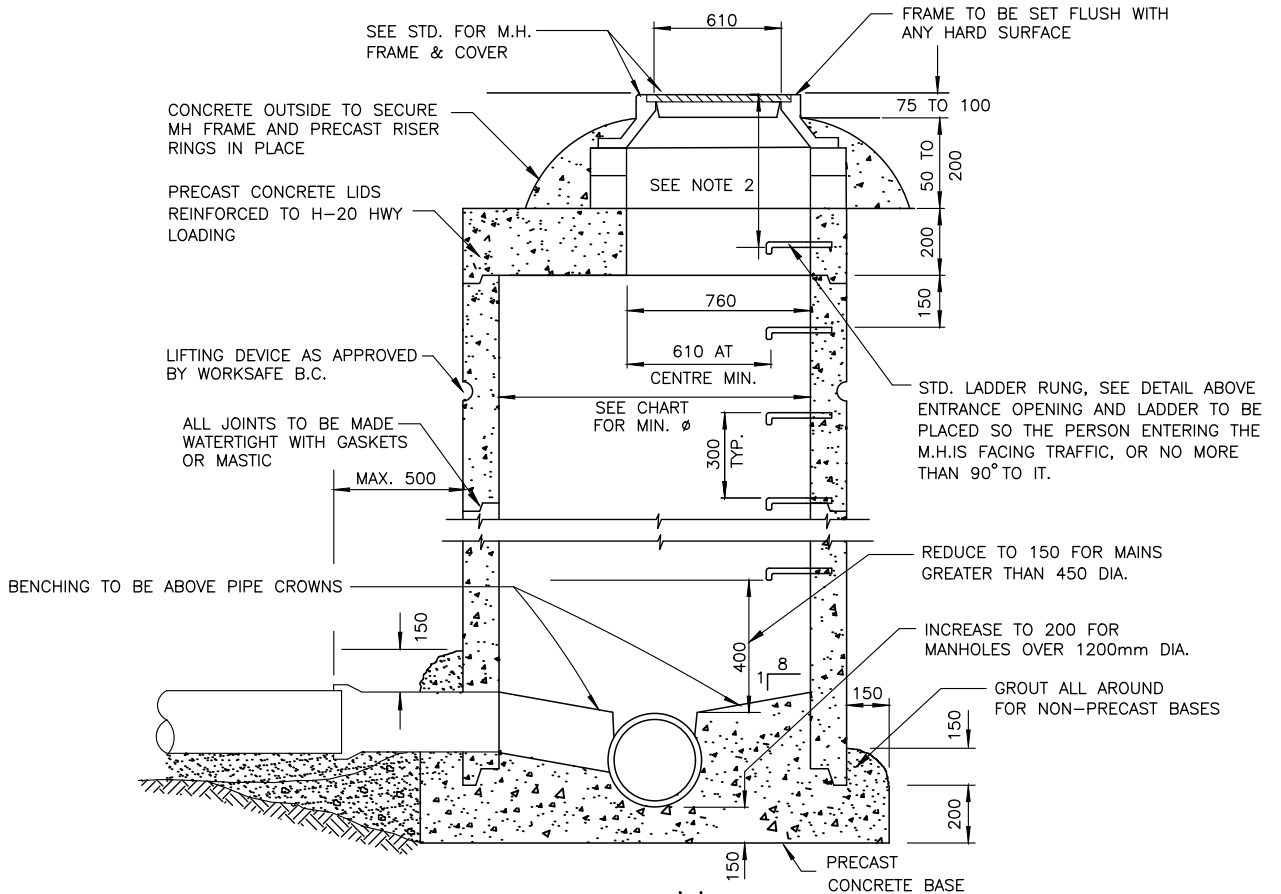
RUNG DETAIL

ALL PIPES TO BE FULLY INSERTED INTO PRECAST GASKETTED BELL OR BE GROUTED FLUSH WITH INSIDE OF MANHOLE.

INSIDE PIPE DIA.	INSIDE MANHOLE DIA.
450 AND LESS	1050
525 AND 600	1200
675 AND 750	1350
900	1500
1050 AND 1200	1800
GREATER THAN 1200	RISE MANHOLE



PLAN



SECTION 'A'

NOTES:

1. ALL PRECAST M.H.'S MUST CONFORM TO A.S.T.M. & CSA SPECIFICATIONS AND HAVE A MIN. 114 WALL THICKNESS.
2. MAXIMUM DEPTH TO FIRST RUNG IS 500mm. WHEN HANDHOLD IS INSTALLED BETWEEN TOP AND FIRST RUNG, MAXIMUM DEPTH MAY BE INCREASED TO 660mm
3. CAST-IN-PLACE BASE SHOWN. PRECAST BASE REQUIRED, UNLESS OTHERWISE APPROVED.
4. FOR OVER-BUILD MH'S, PIPE ENTERING MH MUST NOT PROTRUDE FURTHER THAN 25mm AND BE NO LESS THAN FLUSH WITH INSIDE OF BARREL.

**STANDARD
DETAIL
DRAWING**

DATE:
JUNE 6/24
SCALE:
NTS

MANHOLES

DWG. NO.

SS-S1a

