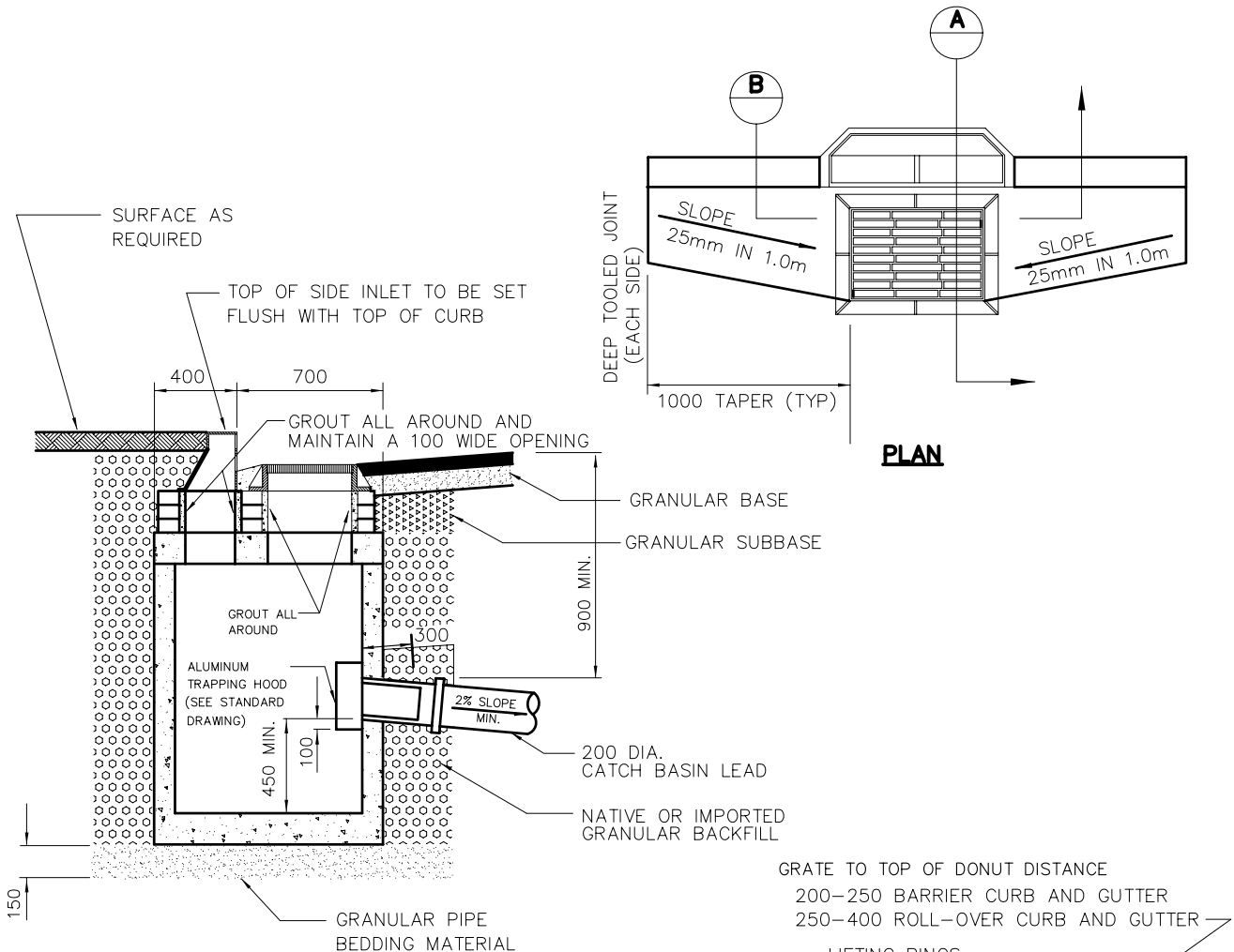
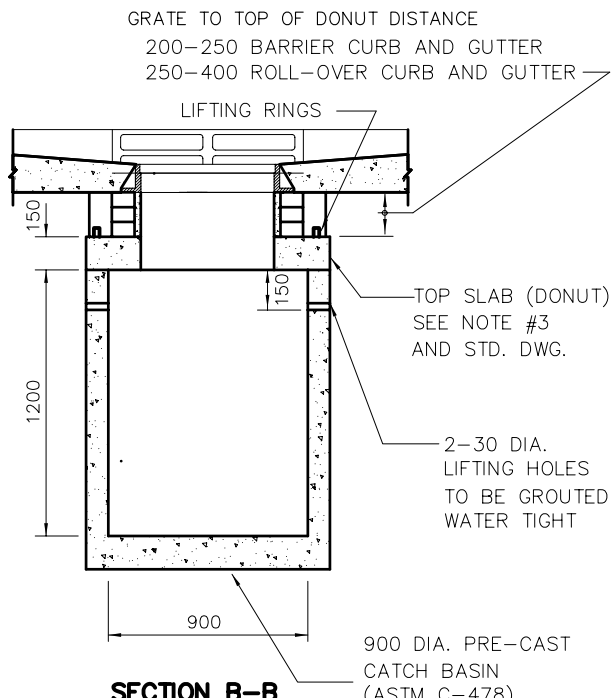


STANDARD DETAIL DRAWINGS



SECTION A-A



SECTION B-B

NOTES:

1. FOR DETAILS OF METAL CASTINGS; SEE STANDARD.
2. REFER TO CATCH BASIN TOP SLAB FOR DETAILS.
3. a) METAL CASTINGS ADJUSTED TO GRADE WITH CONCRETE GRADE RINGS. INSIDE SURFACES TO BE GROUTED SMOOTH.
- b) FOR INSTALLATION OF CATCH BASIN IN ROLLOVER CURB AND GUTTER, USE ROLLOVER FRAME AND GRATE. (WESTVIEW SALES LTD RB7 OR EQUAL)
- c) FOR INSTALLATION OF CATCH BASIN WITHOUT CURB AND GUTTER, BLOCK CURB INLET OPENING IN TOP SLAB WITH SOLID NON-DECOMPOSABLE MATERIAL.
4. GRATE TO BE SET BELOW FIRST LIFT OF ASPHALT WHERE FINAL LIFT IS NOT BEING INSTALLED WITHIN ONE MONTH.

I:\P:\DRAFTING\STD-DWGS\MACD-STD\SS-S11A.dwg

CATCH BASIN (900mm DIA.)

SS-S11a

APRIL 15/08