

DOUBLE-SIDED METERED KIOSK
EXTERNAL

KIOSK CONTENTS

- MICROELECTRIC BS2-INTCVBC - METER BASE, 200A 4 JAW, w/ ISOLATED NEUTRAL BLOCK SQ-D CQ0112M60PC - PANEL, 12CCT 100A, 1Ø 3W 120/240V, W/ 60A MAIN (SERVICE ENTRANCE RATED) (4) SQ-D Q0115 - BREAKERS, 15A 1P, PUSH-ON 10kAIC
- LEVITON GFNT1-W - RECEPTACLE, GFI 15A, 5-15R

KIOSK GENERAL NOTES

- ENCLOSURE CERTIFIED 3R, 240V 60A SUPPLY, 10kA
- KIOSK SHELL MADE OF 0.125" ALUMINUM
- KIOSK SHELL POWDER COATED PC101 (ANSI 61) GREY
- INTERIOR PANELS, WIREWAYS, AND COVERS ARE 14GA GALVANIZED STEEL (UNFINISHED)
- WIREWAYS WITH DEADFRONT COVERS
- HINGED DOORS WITH POUR IN PLACE GASKETS, W/ GAS SHOCK STAYS
- DOOR HANDLES ARE STAINLESS STEEL, PADLOCK-ABLE, AND HAVE THREE POINT LATCHING SYSTEM WIRED FROM METER BASE TO PANEL WITH #3AWG COPPER
- BACK PANEL LAYOUT MAY BE REVISED DURING ASSEMBLY TO ALLOW BETTER FIT OF COMPONENTS WIREWAY FOOTPRINT WILL BE MAINTAINED
- CABLE/CONDUIT CLAMPS SUPPLIED AND INSTALLED BY OTHERS
- SYSTEM DESIGNED FOR HOT-METERED APPLICATIONS
- DESIGNED TO BC HYDRO STANDARD ES54 S1-01 REV 9

CONTROLLER NOTES:

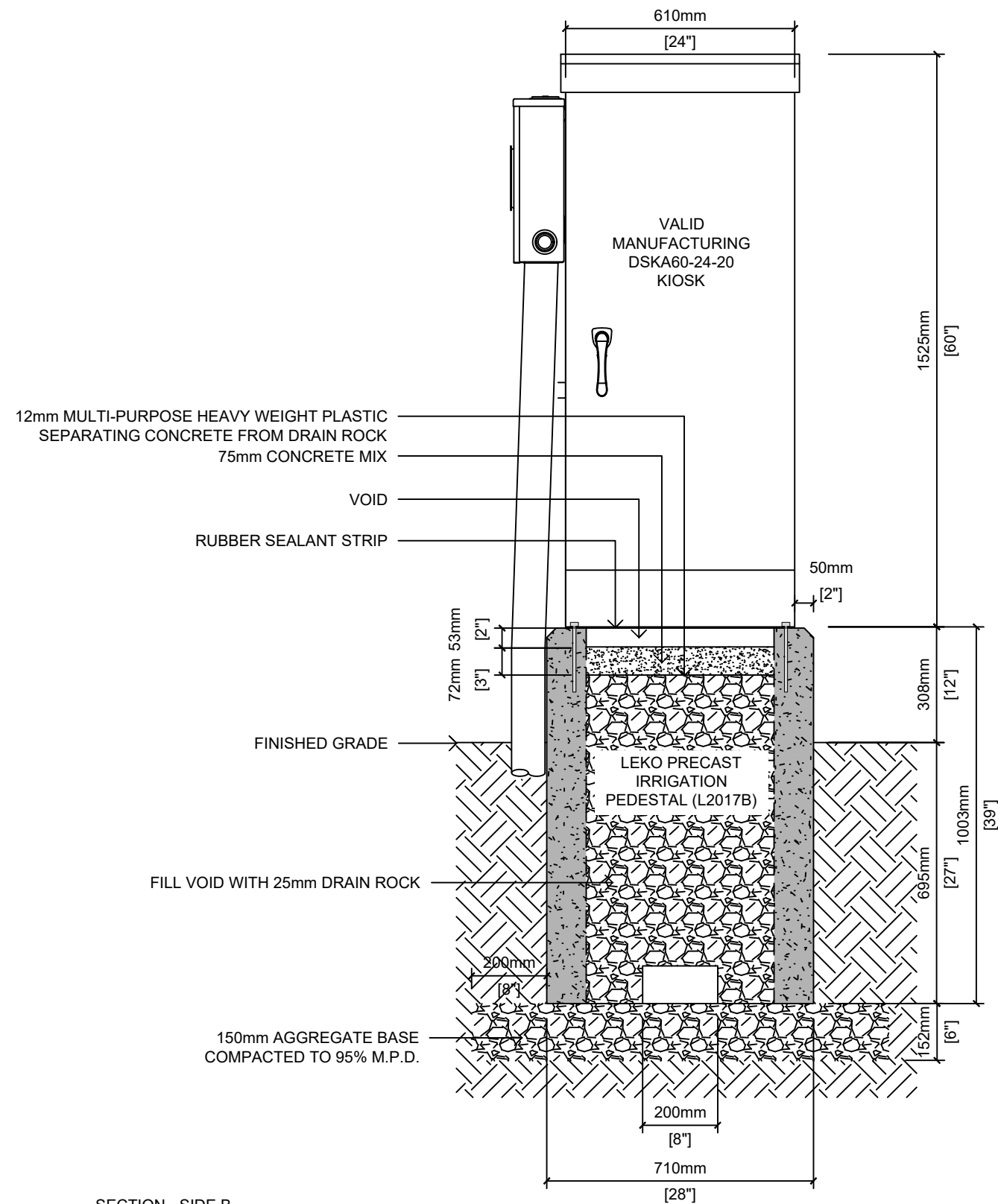
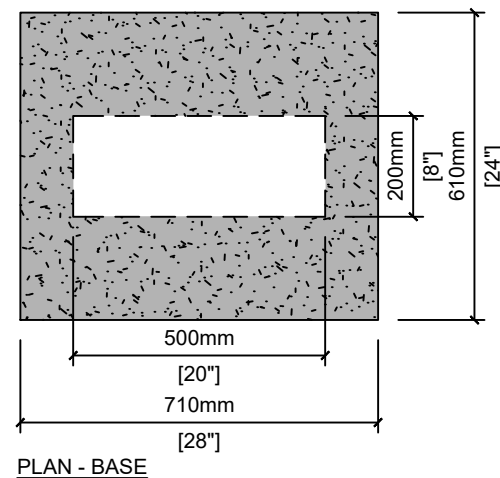
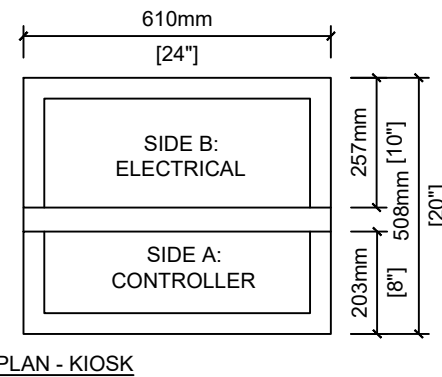
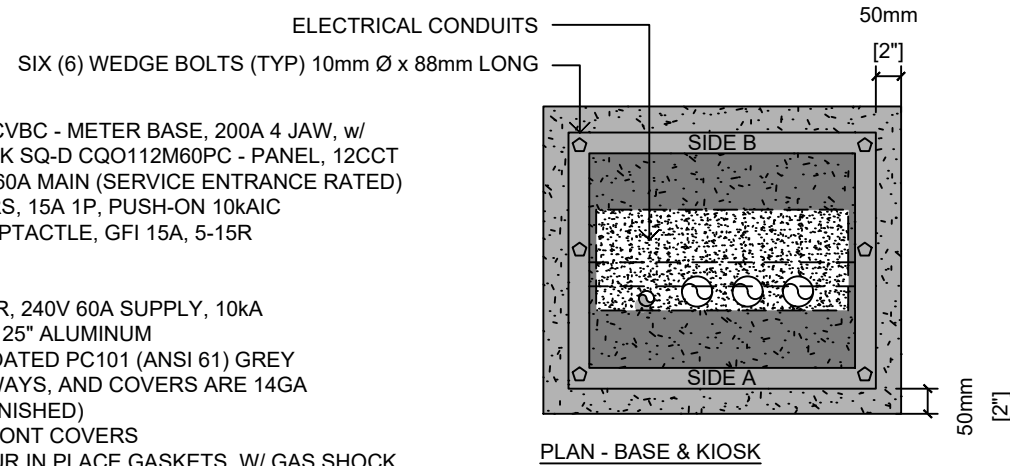
- CONTRACTOR TO INSTALL RAIN BIRD IQ NCC 4G CELLULAR CARTRIDGE
- CONTRACTOR TO CONNECT HYDROMETER AND PROGRAM MASTER VALVE AND FLOW SENSING FUNCTIONS PRIOR TO SUBSTANTIAL COMPLETION
- CONTRACTOR SHALL TO LABEL ALL WIRES

BASE GENERAL NOTES

- PRECAST CONCRETE SHALL BE EXPOSURE CLASS HSe AND MEET MIN COMPRESSIVE STRENGTH OF 30MPA @28d
- AIR CATEGORY: 4.0% - 7.0% (EXCEPT WHERE ZERO-SLUMP CONCRETE IS USED)
- AGGREGATE: CSA/CAN A23.4 MAXIMUM SIZE: 20mm
- ADMIXTURES: CSA/CAN A23.4
- REINFORCING: GRADE 400W CSA G30.18, 3x12 W2.5/W2.5
- INSERT/EMBEDS: AS NOTED IN DRAWING DETAILS
- MANUFACTURE OF PRECAST CONCRETE UNITS SHALL BE IN ACCORDANCE WITH SPECIFICATION CSA A23.4

** LEKO PRECAST LTD. SHALL NOT BE RESPONSIBLE FOR INSTALLATION PRACTICES FOLLOWED ON-SITE UNLESS PERFORMED BY LEKO PRECAST LTD. **

600Kg (1300 LBS)



DETAIL TITLE:

DETAIL No.:
SS-IR.01b

SCALE:
1:15