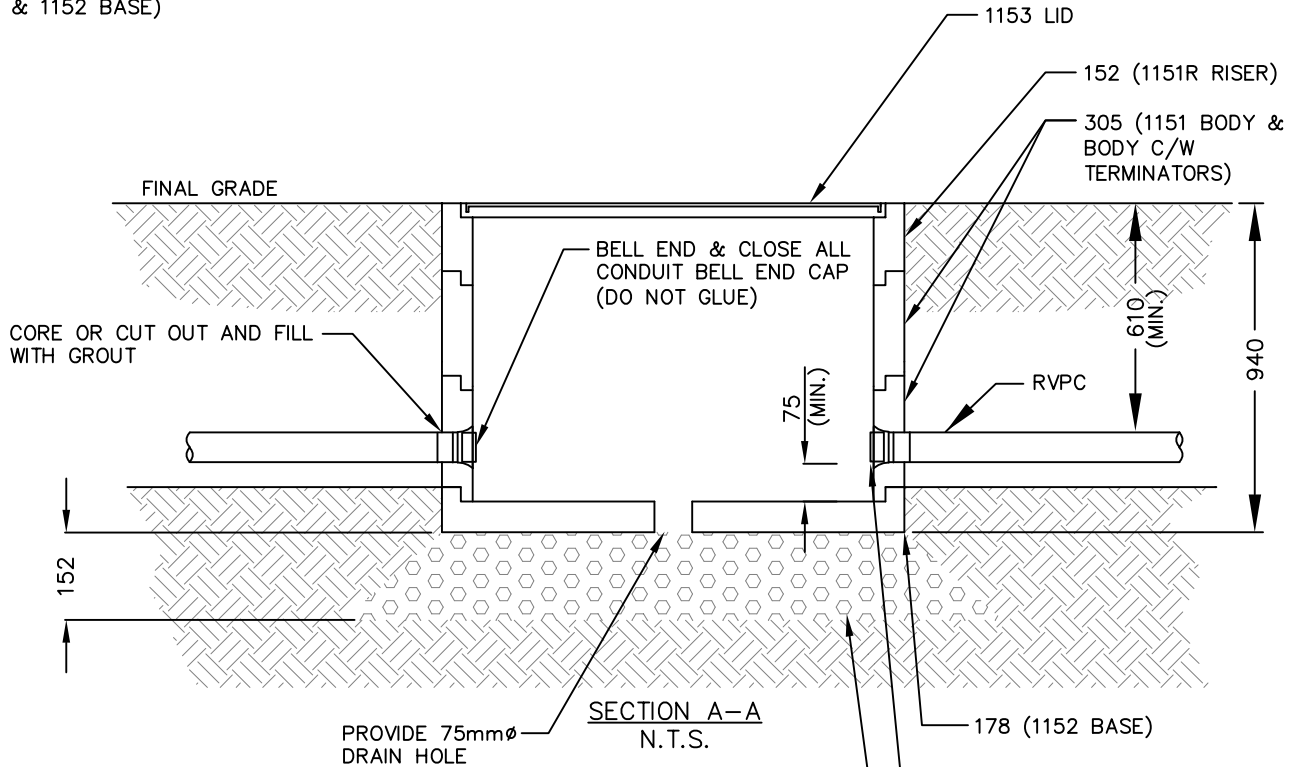


BOX & GALVANIZED LID KON  
KAST PRODUCTS LTD. (1153  
LID, 1151R RISER, 1151 BODY,  
1151 BODY C/W TERMINATORS  
& 1152 BASE)



**NOTES**

1. REFER TO CONTRACT DRAWINGS AND SECTION 34 41 13 FOR DETAILED SPECIFICATIONS.
2. ALL DIMENSIONS IN MILLIMETERS UNLESS OTHERWISE NOTED
3. INSTALL LID ON CONCRETE PULL BOX BEFORE BACKFILLING, TAMPING & PAVING OPERATIONS.
4. INSTALL TOP OF PULL BOX FLUSH WITH FINISHED GRADE
5. INSTALL RUBBER TAPE OVER MARRETTE FOLLOWED BY BLACK ELECTRICAL TAPE

**STANDARD  
DETAIL  
DRAWING**

DATE:  
7/20/20  
SCALE:  
NTS

**CONCRETE TRAFFIC  
COMMUNICATION PULL BOX  
DETAILS**

DWG. NO.

**SS-E2.5**

