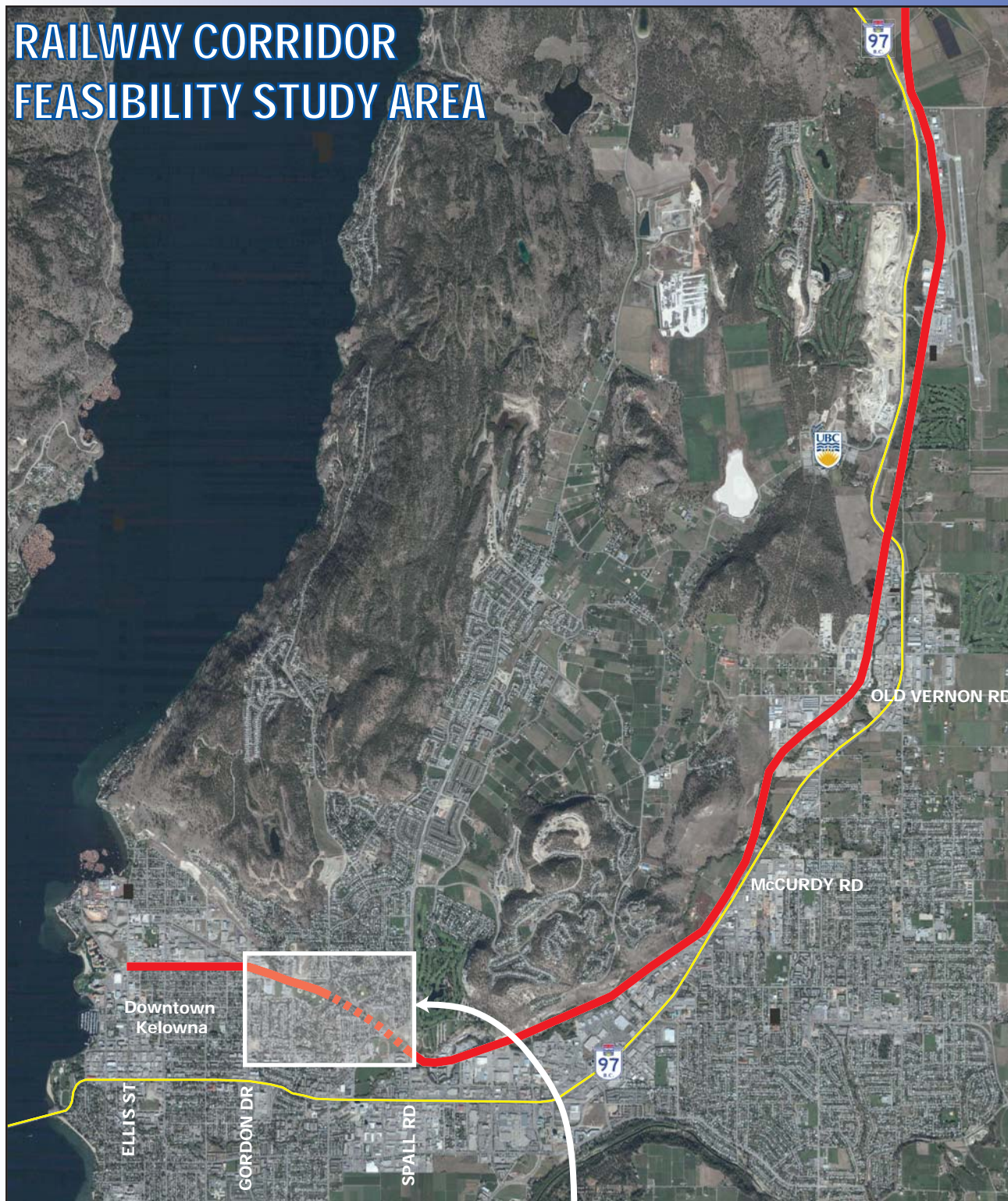


RAILWAY CORRIDOR FEASIBILITY STUDY AREA

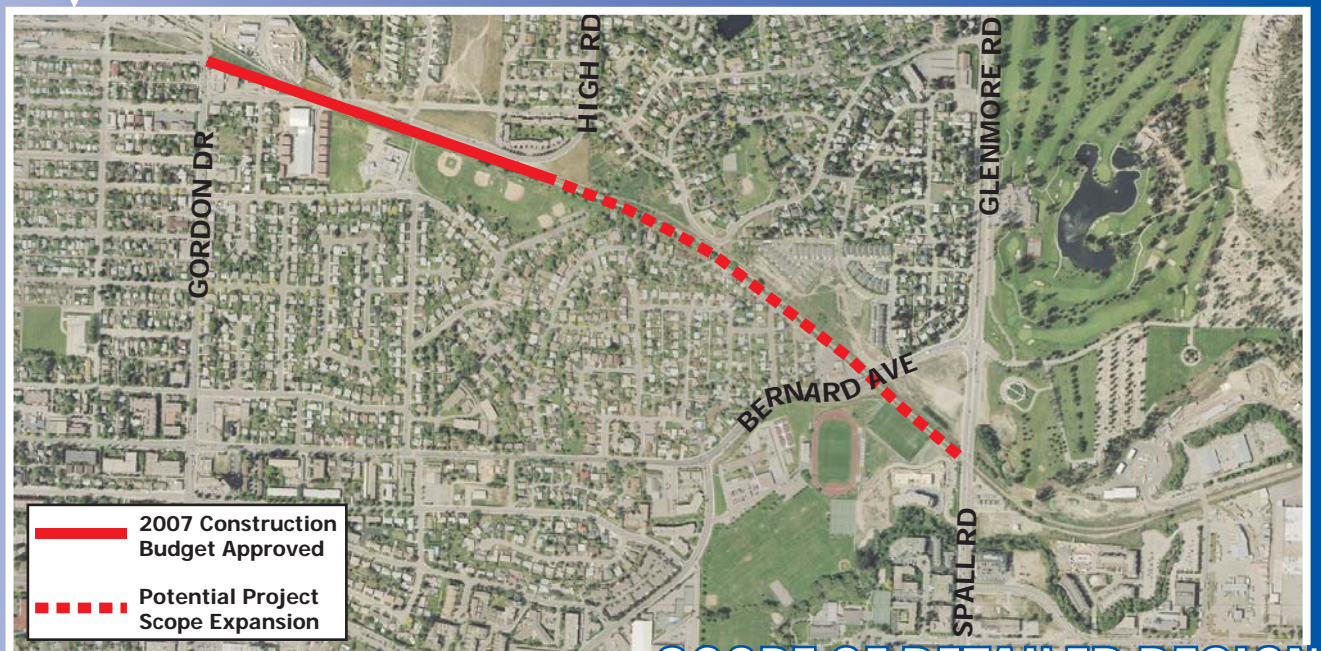


RAILWAY CORRIDOR EXISTING CONDITIONS

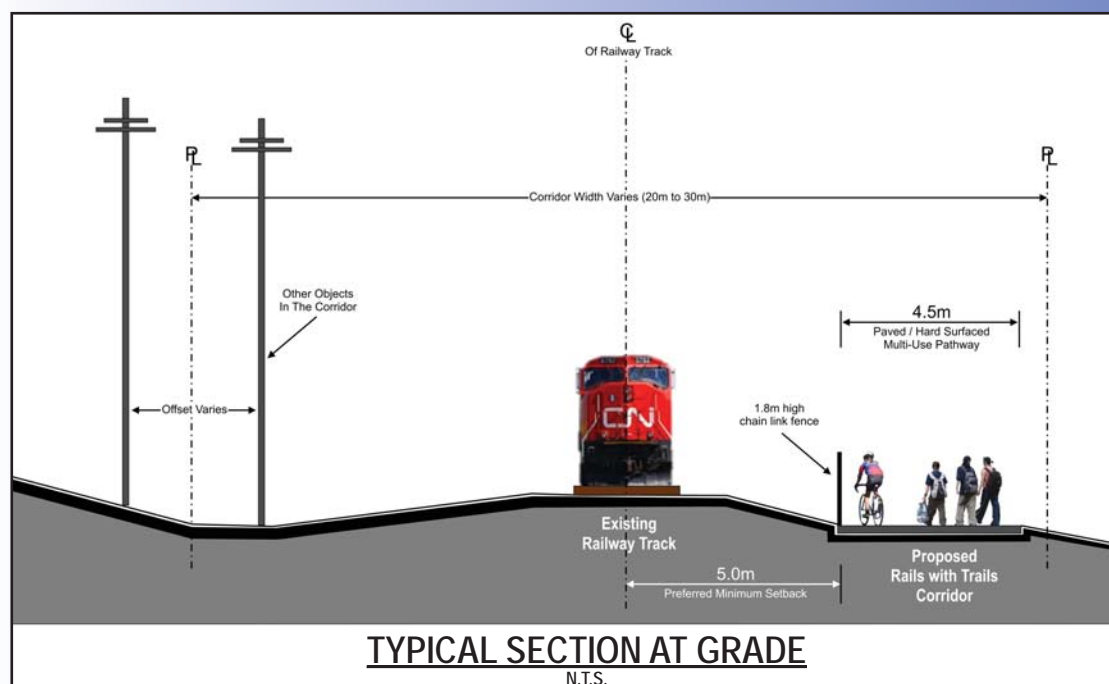


An active railway currently runs from downtown Kelowna to the northern city limit. The corridor is approximately 20 kilometres long and on average 20 metres wide.

The City of Kelowna completed a study in 2000 to assess the feasibility of creating a trail along the active railway. The study determined that this goal was feasible and the City of Kelowna proceeded to undertake detailed design of the trail between Gordon Drive and Spall Road in 2005.



SCOPE OF DETAILED DESIGN



PROPOSED DESIGN

- The preferred setback from the edge of trail to the centreline of the railway track is 5.0 metres.
- A fence is required between the railway and the trail.
- The preferred width of trail is 4.5m with a paved surface.



Rails with Trails Corridor